

STAGEMAKER®

controllers Configuration C - Raynok*

programmable control system - single speed

Stagemaker® Configuration C hoists used with a Programmable Controller allow you to pre-program cues and control hoists individually, simultaneously or by groups. Ideal for live performance venues, television and film studios, casino showrooms, boardrooms, convention facilities, and sporting complexes.

Third party controllers and software, such as Niscon, Inc's Raynok Motion Control System maximize the capabilities of Stagemaker® Configuration C hoists. Raynok's software allows the creative and technical teams to create fluid scenic imagery. Utilizing common Windows™ XP commands, Raynok makes learning basic and advanced programming and cueing easy and intuitive. Drop down menus, right mouse button menus, toolbars, and a customizable multi-monitor graphic display aid the operator in configuring a comfortable desktop workspace.

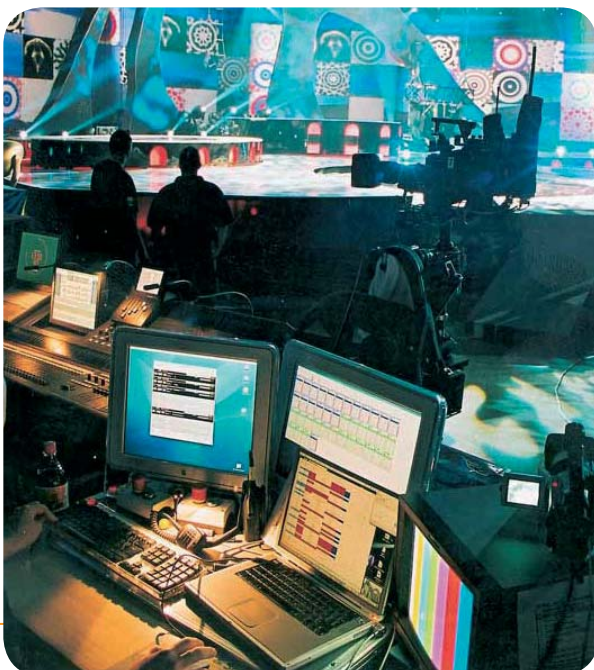


hoist features

- Specially equipped for normal position
- Incremental encoder for positioning
- Hoist motor thermal protection
- Black load chain with chain container for up to 100' of chain
- 208V-3Ph-60Hz power supply
- Low voltage (115 VAC) control
- Upper and lower electrical limit switches (weight-operated)
- Non-reflecting matte black finish
- Over-load protection via the torque limiting device
- Steel control enclosure (except SM1, NORYL plastic)
- Fixed body hook
- Power / control pigtail with 16 pin Harding connector

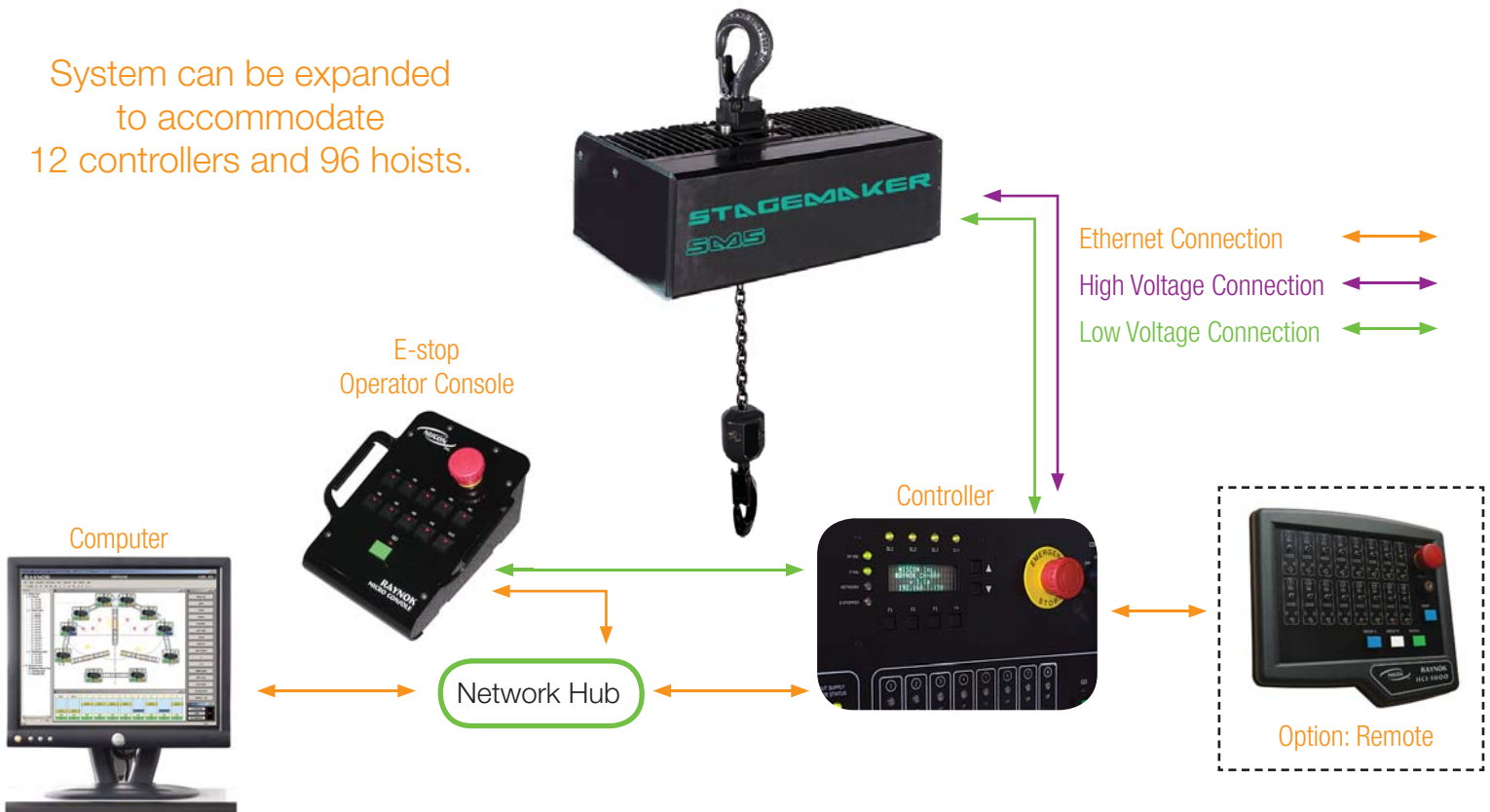
Raynok features

- Displays imperial or metric units
- Displays multiple languages
- "Go" button as dead-man function
- Plan view - view of rig and hoist selection
- Selection view - view status of hoist and elevation



* Controllers and software, which have been designed and tested with Stagemaker® hoists, are provided by Niscon, Inc. Raynok is a trade name of Niscon, Inc. Computers, remotes, controllers and connectors are sold separately.

System can be expanded to accommodate 12 controllers and 96 hoists.



system description

- Hoist selection can be defined for individual or group operation (with adjustable synchronization).
- The various positions of the hoists are determined by an incremental encoder. The information is then recorded and temporarily stored in the Programmable Controller in the event of power failure.
- The pre-selection, height adjustment, and delays can be set separately in order to create multiple combinations in accordance with the various shows and stage sets.
- Special effects can be created by adjusting the delay and synchronization features.
- Manual operation is possible without the PC using the controller touch keys and LED indicator.

hoist options

- Inverted mounting position - includes a polyamide chain guide (SM5 and SM10), handgrips, and a swiveling body hook (except SM1). Upper and lower limit switches (weight operated) are removed and a geared limit switch is added.
- Self-locking hook (SM5 and SM10)
- Geared limit switch (except SM1)
- Second brake (SM5 and SM10 only)
- 10:1 safety factor

pc requirements

- Windows OS - XP Professional recommended
- CPU Pentium III, or higher
- Memory 512MB RAM, or higher
- Resolution 1024 x 768 pixels
- CD drive
- 10/100 network card
- 250MB storage space

