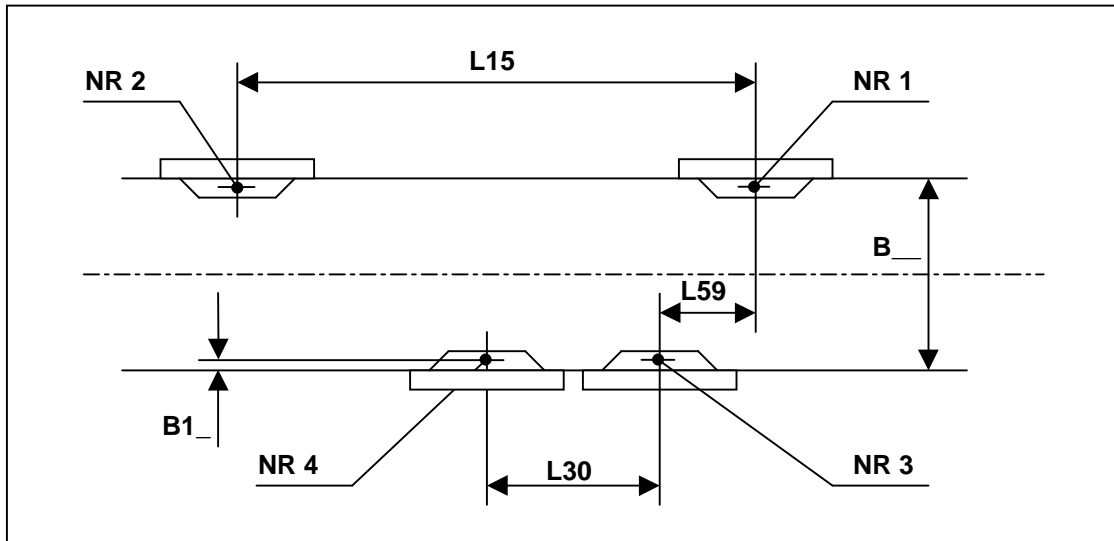


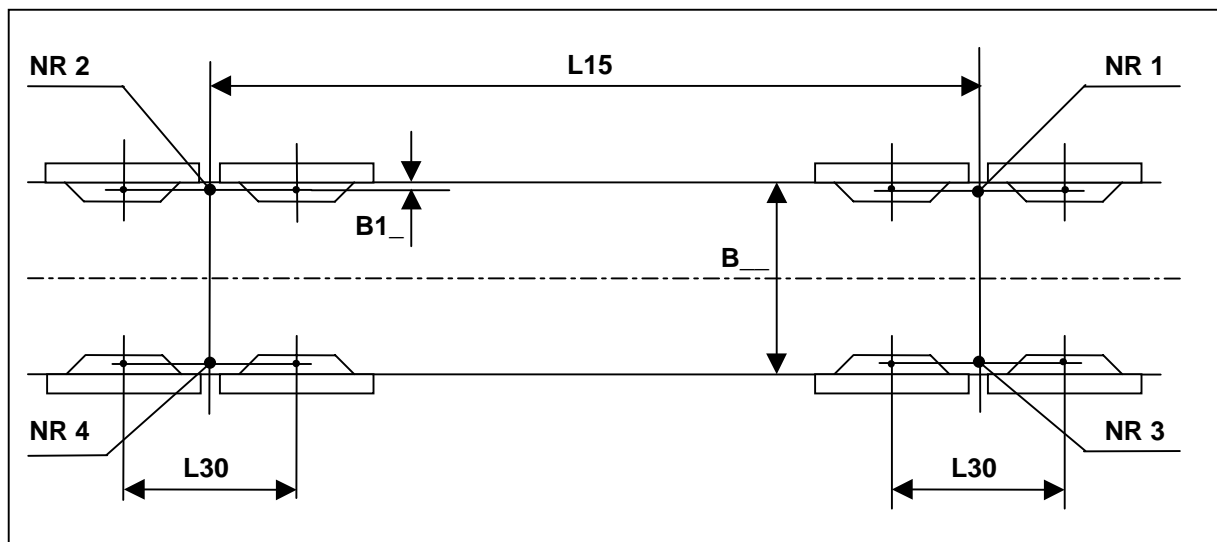
TROLLEY LOAD DRAWINGS & VALUES 24

All load values shown in following tables are static and do not include impact allowances. Load values for four wheel trolleys, either under running monorail or top running double girder, are for each wheel. For six, eight, twelve or sixteen wheel equalizing trolley, see appropriate load drawing, because load values are for load points, not necessarily for wheels. Wheels are symmetrical about the load point for all equalizing trolleys. For hoist capacity ratings in short ton, the unit of measure for loads is pounds (lbs.) and for hoist capacity ratings in kilogram or metric ton, the unit of measure for loads is kilogram (kg). All trolley dimensions shown, regardless of capacity rating, are millimeters (mm).

4 Wheel Monorail Trolley

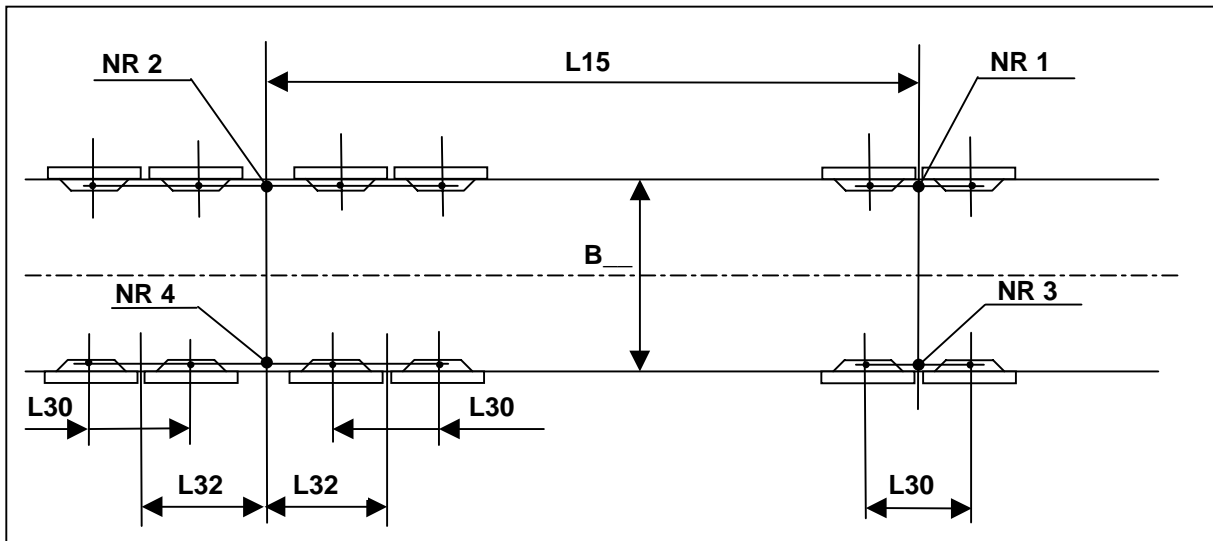


8 Wheel Equalizing Monorail Trolley

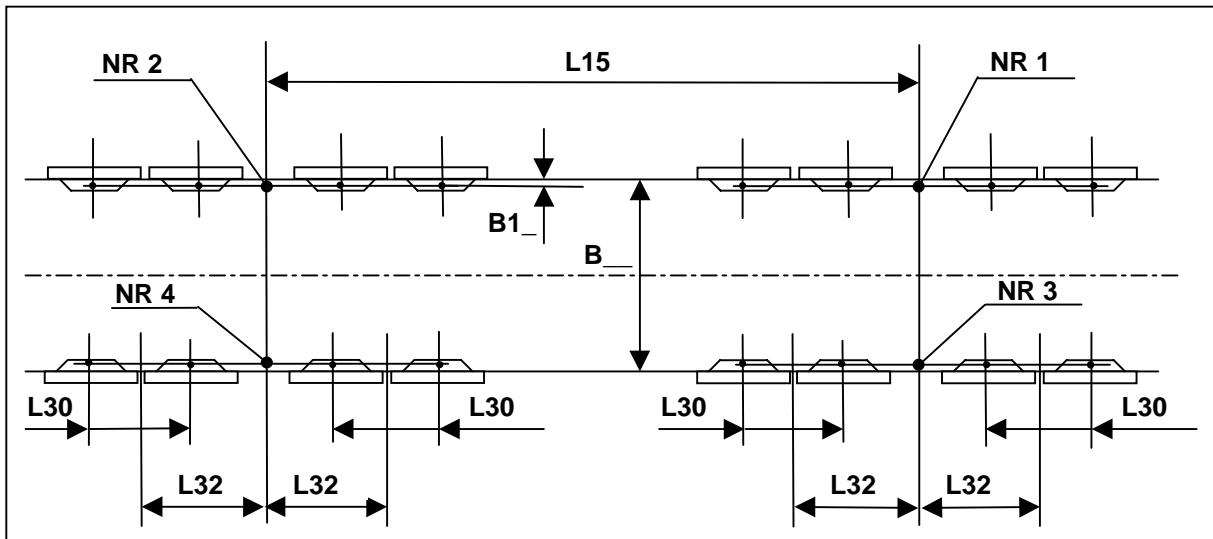


TROLLEY LOAD DRAWINGS & VALUES	24
---	-----------

12 Wheel Equalizing Monorail Trolley

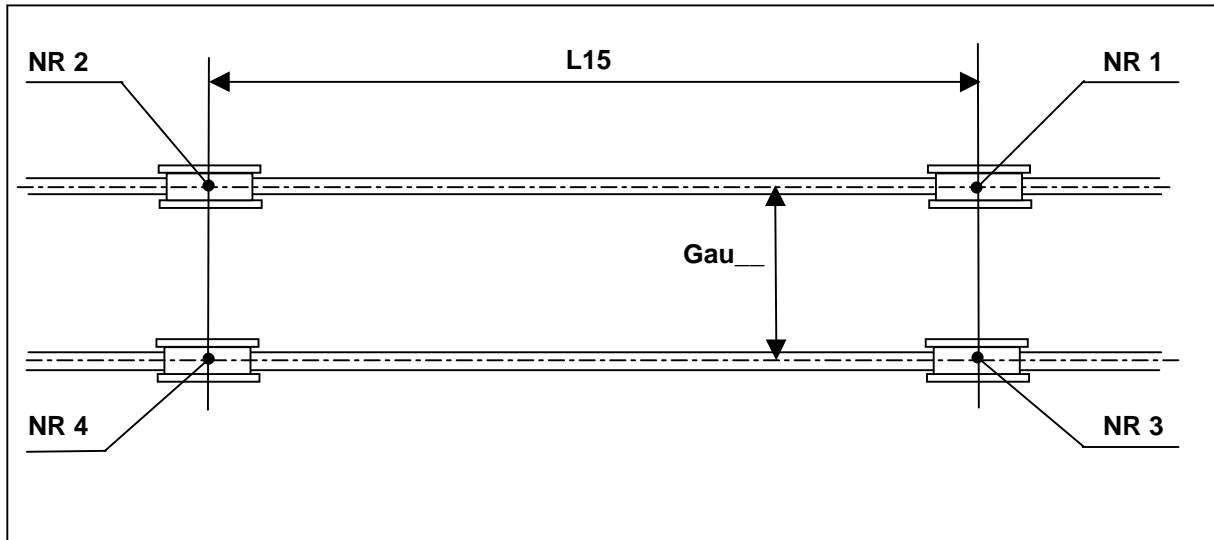


16 Wheel Equalizing Monorail Trolley



TROLLEY LOAD DRAWINGS & VALUES	24
---	-----------

4 Wheel Double Girder Trolley



6 Wheel Equalizing Double Girder Trolley

