



R&M Materials Handling, Inc.
4501 Gateway Boulevard
Springfield, Ohio 45502
☎ : (937) 328-5100
FAX: (937) 325-5319

1 Instructions

The GES drive installation, operation and maintenance manuals are included with the shipment of the unit. The drive warning labels and markings.



Read all the instructions supplied before installing and commissioning the drive.



Keep the instructions in a safe place for future reference.

1.1 Symbols and abbreviations

The following symbols are used in the instructions:



Warning!



Caution

2 Safety instructions

2.1 Safety instructions for preparing to install the drive



Follow these instructions when preparing to install the drive:

- Ensure that installation personnel are competent and qualified, and they are provided with adequate instructions for carrying out the installation work.
- Check for any dimensional nonconformances in the drawings, instructions, parts and structural measurements.
- Beware of other moving machinery - such as machines, other cranes and automatic doors - in the installation and servicing area. The installation area must be arranged so that operation of other equipment in the area does not endanger installation work (or *vice versa*).
- Prevent unauthorized persons and bystanders from walking in or under the work site.

2.2 Safety instructions for installing and operating the drive



Follow these instructions when installing the drive:

- Use proper safety equipment to prevent objects from falling when working in high places.
- Ensure that machinery and equipment cannot start up accidentally and cannot moved during installation and servicing.
- Keep the installation and servicing locations and walkways leading to them, clean and tidy.



Follow these instructions when operating the drive:

- The useful lifetime of the drive depends heavily on whether the machinery is properly suited for the environment and the crane duty group classification. Do not use the drive for other than the duty group classification for which it was designed or selected.
- When traveling, make sure that the moving parts do not collide with objects or people.
- If the drive is accidentally impacted in a collision, check the tightness of the mounting bolts and the operation of the motor, brake, and gear. Check the traveling motions and pay special attention to any abnormal noises that would indicate damage in the gear-train.



R&M Materials Handling, Inc.
4501 Gateway Boulevard
Springfield, Ohio 45502
☎ : (937) 328-5100
FAX: (937) 325-5319

- If defects have been noticed in the drive, carry out the necessary inspections and repair work. Be sure that the drive operates properly before you start to use it again.
- Avoid short, jerky motions. Unnecessary short starts will cause the motor to overheat quickly.
- Do not change the size of the fuses provided in the controls. A qualified electrician should carry out all electrical work.

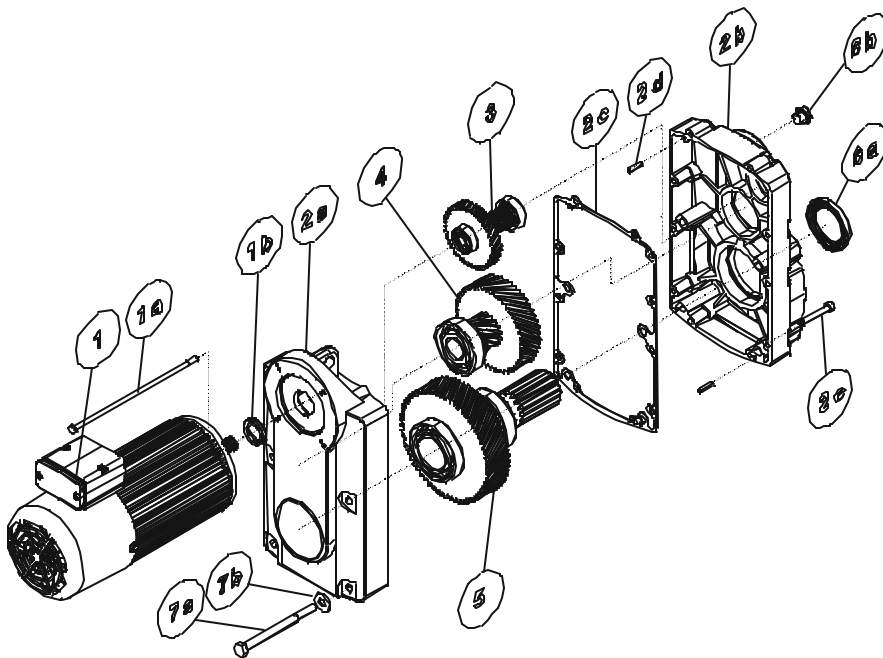
2.3 Safety instructions for servicing the drive



Follow these instructions when servicing the drive:

- Carry out regular inspections and preventive maintenance in compliance with the instructions. Keep a record of inspections and servicing. Regular servicing and inspection procedures are necessary for the safe and efficient operation of the drive. In uncertain or unusual cases, contact the supplier of the drive.
- Pay special attention to the operation of the brake. It is essential that safety devices work correctly and are in full operating order.
- Use trained service personnel for servicing the drive. The person servicing the drive must be competent for the task and must be familiar with the servicing and inspection instructions.
- Use only genuine spare parts approved by the manufacturer of the drive.

3 GES Drive



- 1 Motor with drive pinion
- 1a Motor mounting bolt
- 1b Motor shaft seal
- 2a Gear cover
- 2b Gear housing
- 2c Gasket
- 2d Aligning pins
- 2e Gear mounting bolts
- 3 First intermediate shaft set (gear shaft, wheel and bearings)
- 4 Second intermediate shaft set
- 5 Secondary shaft set
- 6a Secondary shaft sealing
- 6b Breather plug
- 7a Mounting bolt
- 7b Washer