



R&M Materials Handling, Inc.
4501 Gateway Boulevard
Springfield, Ohio 45502
☎ : (937) 328-5100
FAX: (937) 325-5319



If machinery is operating under heavy conditions (high temperature, high humidity level, difficult atmosphere) the lubricant shall be changed regularly. When necessary, pump the old lubricant out from the breather plughole and refill the gear with a fresh lubricant. See 'Lubricants' section for the correct lubricant type and lubricant amount.

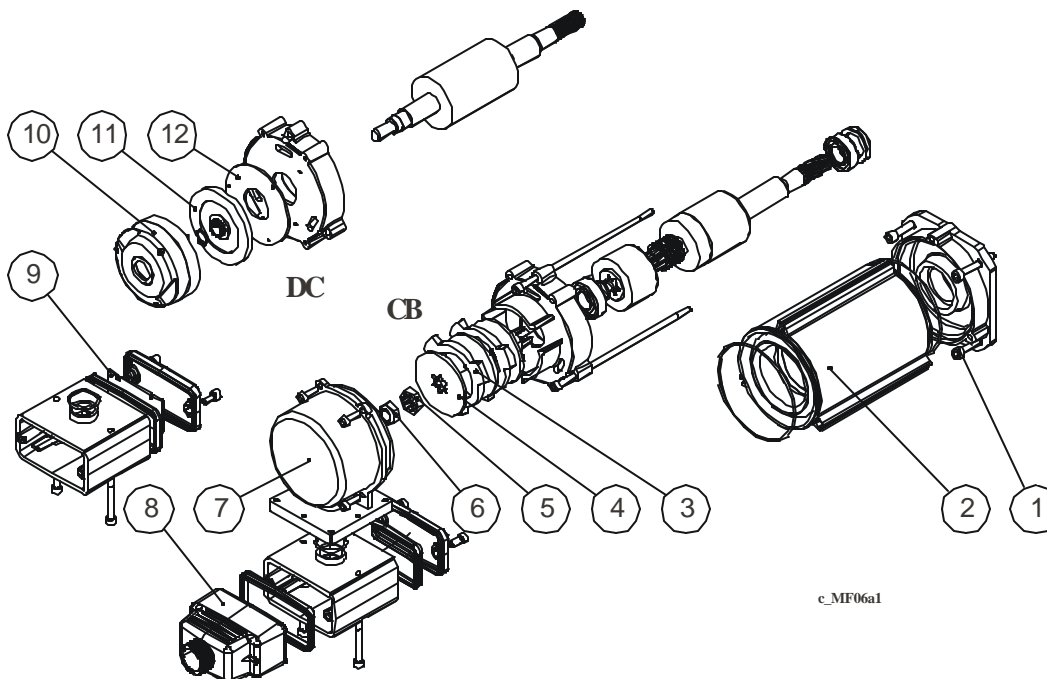
3.6 Removing the drive



Ensure that the working area is safe and the machine cannot be started accidentally when doing the assembly work. Be sure to switch off and lock out power at the main switch to avoid an electrical hazard.

- Disconnect the power supply plug from the motor.
- Remove the mounting bolts from the drive.
- Pull out the unit from the wheel.
- Assemble the new unit according to the instructions in section 'Assembling the drive'.

4 MF06 motor with Compact or DC brake



c_MF06a1

DC=DC-brake

CB=Compact brake

1. Mounting bolts for traveling gear

2. Motor

3. Friction disc

4. Brake disc

5. Aluminum ring

6. Adjustment nut for brake air gap (self-locking)

7. Brake cover

8. Power supply plug

9. Rectifier (DC brake motor)

10. Brake (DC brake motor)

11. Brake disc (DC brake motor)

12. Friction plate (DC brake motor)



R&M Materials Handling, Inc.
4501 Gateway Boulevard
Springfield, Ohio 45502
☎ : (937) 328-5100
FAX: (937) 325-5319

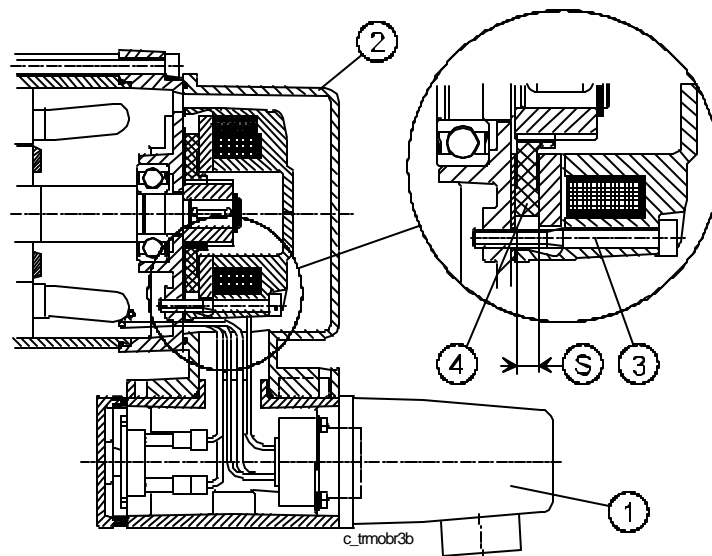
4.1 Adjustment of Compact-brake air gap

- Switch off and lock out power at the main switch.
- Check for any live power at the motor.
- Remove the power supply plug (8) from the motor.
- Open the motor cover (7).
- Push the brake disc (4) and measure the air gap between the adjustment nut (6) and aluminum ring (5). The air gap has to be 0.2 - 0.3 mm. If needed, adjust the air gap by turning the adjustment nut (6).
- Reinstall the brake cover (7) and plug in the power supply plug (8).

4.2 Removing the Compact-brake

- Switch off and lock out power at the main switch.
- Check for any live power at the motor.
- Unplug the power supply plug (8) from the motor.
- Open the motor cover (7).
- Unscrew the adjustment nut (6) for the brake air gap.
- Remove the brake parts. If the thickness of the friction material is less than 5 mm, replace all the brake parts.
- Reassemble in the reverse order.
- Adjust the brake air gap. Refer to the 'Adjustment of Compact-brake air gap' section.

4.3 Removing and inspection of DC-brake



1. Power supply plug
 2. Motor cover
 3. Brake mounting screws
 4. Brake friction disc
- S. Thickness of brake friction disc



R&M Materials Handling, Inc.
4501 Gateway Boulevard
Springfield, Ohio 45502
☎ : (937) 328-5100
FAX: (937) 325-5319

- Switch off and lock out power at the main switch.
- Check for any live power at the motor.
- Unplug the power supply plug (1) from the motor.
- Open the brake cover (2).
- Unscrew the brake mounting screws (3).
- Check the brake type on the rating plate attached to the brake. Measure the thickness of the brake disc (4). Replace the brake disc if it has worn below the minimum thickness as shown in the table.

Brake type and size	Min. thickness of brake disc	Tightening torque for Brake mounting screws
NM38710NR#, 2 Nm	5.8 mm	2.5 Nm / 1.8 lbf.ft
NM38711NR#, 4 Nm	5.95 mm	2.5 Nm / 1.8 lbf.ft

- Reassemble in the reverse order.

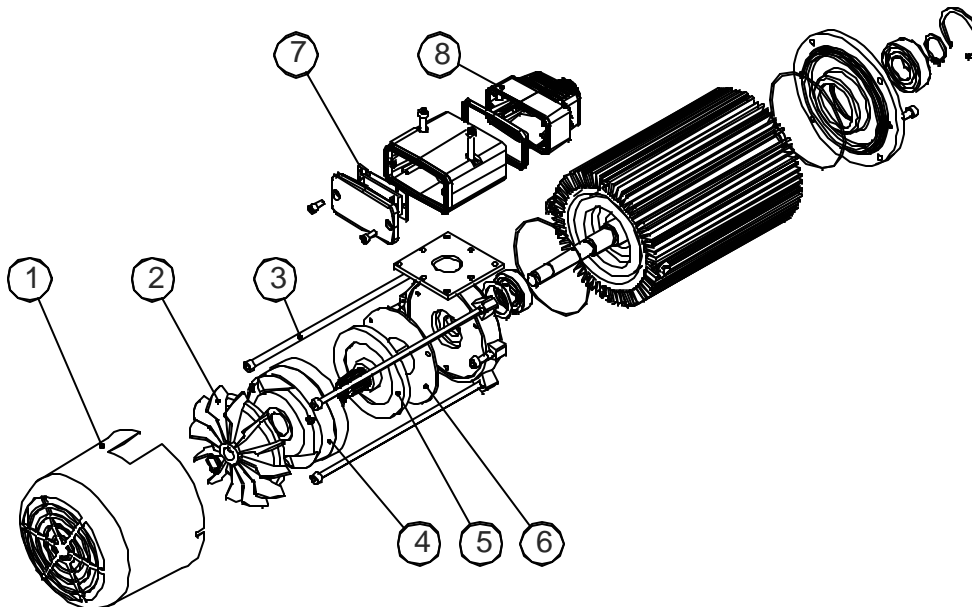


Tighten the brake mounting screws to the tightening torque for the brake screws shown in the table above.

4.4 Removing the motor

- Switch off and lock out power at the main switch.
- Check for any live power at the motor.
- Unplug the power supply plug (8) from the motor.
- Remove the motor mounting screws (1).
- Detach the motor from the gearbox.
- Reassemble in the reverse order.

5 MF07 and MF10 motor



1. Fan cover
2. Fan / Flywheel
3. Motor mounting screws
4. Brake
5. Brake disc
6. Friction plate
7. Rectifier
8. Power supply plug