



R&M Materials Handling, Inc.  
4501 Gateway Boulevard  
Springfield, Ohio 45502  
☎ : (937) 328-5100  
FAX: (937) 325-5319

- Switch off and lock out power at the main switch.
- Check for any live power at the motor.
- Unplug the power supply plug (1) from the motor.
- Open the brake cover (2).
- Unscrew the brake mounting screws (3).
- Check the brake type on the rating plate attached to the brake. Measure the thickness of the brake disc (4). Replace the brake disc if it has worn below the minimum thickness as shown in the table.

Brake type and size	Min. thickness of brake disc	Tightening torque for Brake mounting screws
NM38710NR#, 2 Nm	5.8 mm	2.5 Nm / 1.8 lbf.ft
NM38711NR#, 4 Nm	5.95 mm	2.5 Nm / 1.8 lbf.ft

- Reassemble in the reverse order.

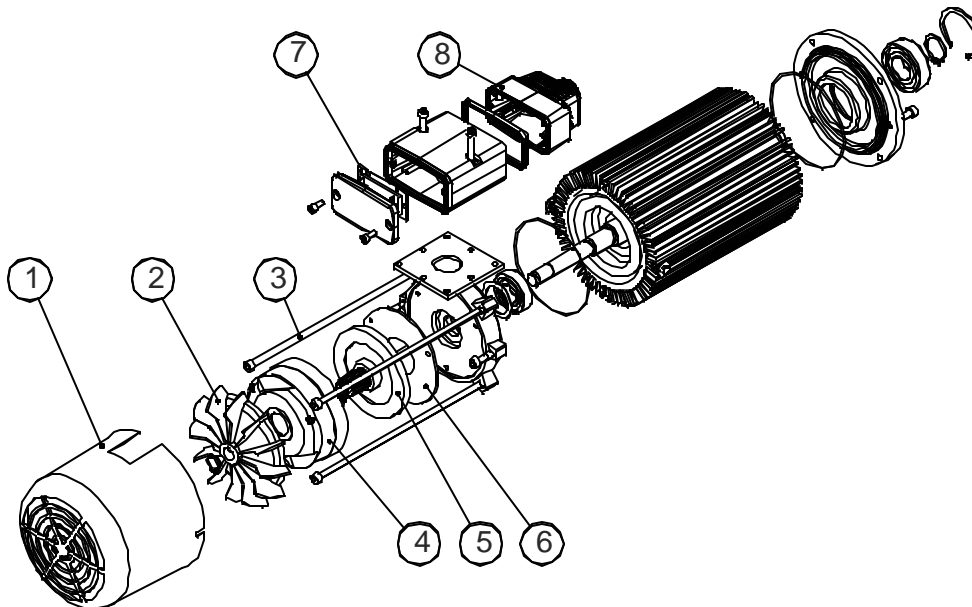


**Tighten the brake mounting screws to the tightening torque for the brake screws shown in the table above.**

#### 4.4 Removing the motor

- Switch off and lock out power at the main switch.
- Check for any live power at the motor.
- Unplug the power supply plug (8) from the motor.
- Remove the motor mounting screws (1).
- Detach the motor from the gearbox.
- Reassemble in the reverse order.

### 5 MF07 and MF10 motor



1. Fan cover
2. Fan / Flywheel
3. Motor mounting screws
4. Brake
5. Brake disc
6. Friction plate
7. Rectifier
8. Power supply plug



R&M Materials Handling, Inc.  
 4501 Gateway Boulevard  
 Springfield, Ohio 45502  
 ☎ : (937) 328-5100  
 FAX: (937) 325-5319

## 5.1 Removing and inspection of DC brake

- Switch off and lock out power at the main switch.
- Check for any live power at the motor.
- Unplug the power supply plug (8) from the motor.
- Remove the fan cover (1).
- Remove the fan (2).
- Unscrew the brake mounting screws.
- Check the brake type on the rating plate attached to the brake. Measure the thickness of the brake disc (5). Replace the brake disc if it has worn below the minimum thickness as shown in the table below.

Brake type and size	Min. thickness of brake disc	Tightening torque for Brake mounting screws
NM38770NR#, 16 Nm	6.8 mm	5 Nm / 3.7 lbf.ft
NM38771NR#, 8 Nm	6.65 mm	5 Nm / 3.7 lbf.ft
NM38720NR#, 21 Nm	7.6 mm	9 Nm / 6.6 lbf.ft

- Reassemble in the reverse order.



**Tighten the brake mounting screws to the tightening torque for brake mounting screws shown in the table above.**

## 5.2 Removing the motor

- Switch off and lock out power at the main switch.
- Check for any live power at the motor.
- Unplug the power supply plug (8) from the motor.
- Remove the motor mounting screws (3).
- Detach the motor from the gearbox.
- Reassemble in the reverse order.

## 6 Lubricants



**Use of a low-grade or incompatible lubricant could damage the gearing or bearings. Use only the lubricants recommended by the manufacturer.**

Factory-installed lubricant unless otherwise specified:

Gear type	Trade name and number	Volume	Operating temperature °C
GES3	Mobilux EP 004	250 ml / 15 cu.in.	-30...+120
GES4	Mobilux EP 004	500 ml / 30 cu.in.	-30...+120
GES5	Mobilux EP 004	1000 ml / 61 cu.in.	-30...+120



If the transmission lubricant has to be topped off, make sure that the lubricant being added is compatible. If transmission oil has to be replaced, flush out the gearbox before filling it up.