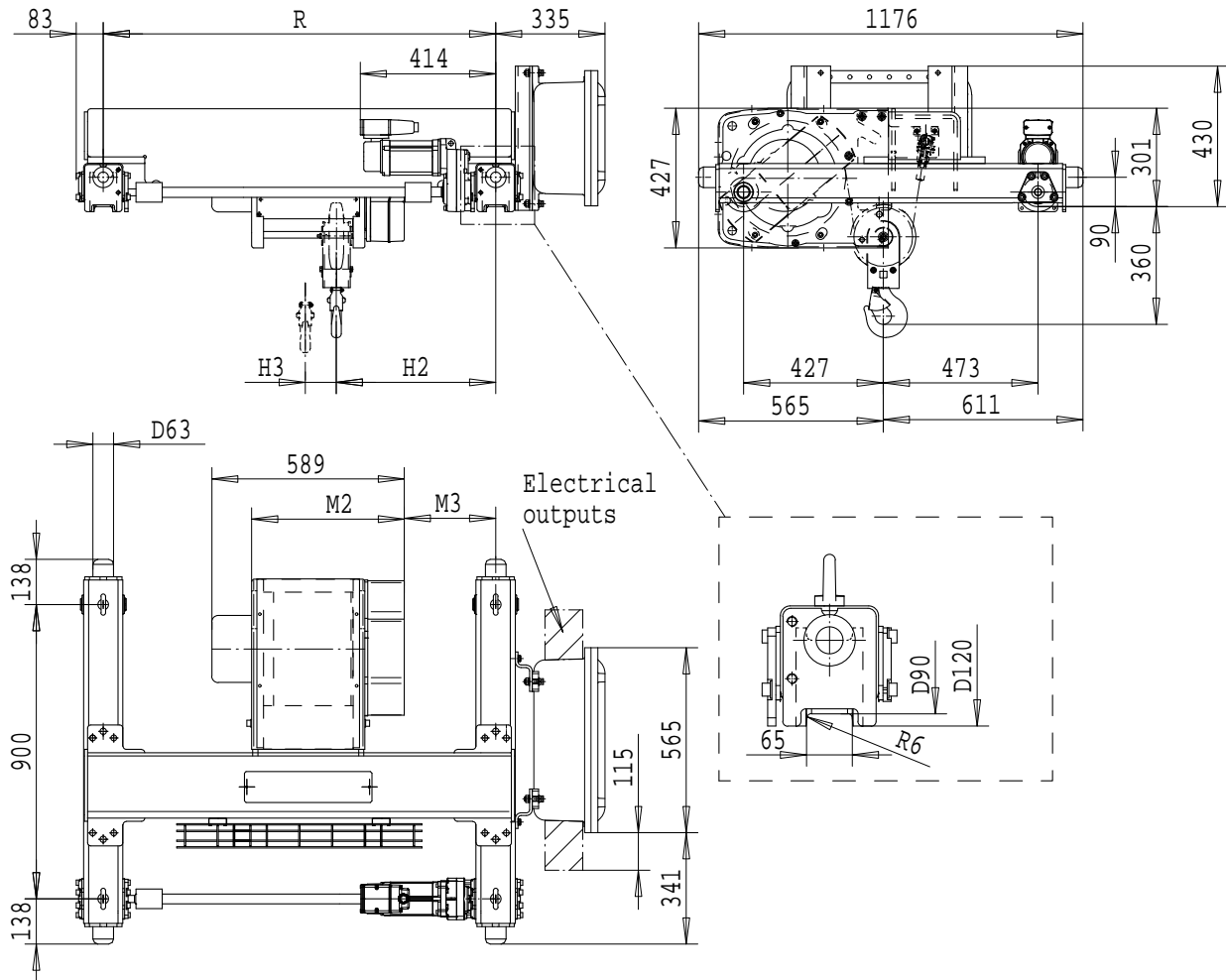


R&M SPACEMASTER EX

DOUBLE GIRDER, 2 PART SINGLE SX4 EX 021...D0



Load (kg)	Class Fem/ISO	Hoisting speed (m/min)
1600	3m/M6	12/2
2000	3m/M6	12/2
2500	2m/M5	12/2

SI-60Hz

HOL (m)	Length code	M2 (mm)	M3 (mm)	H2 (mm)	H3 (mm)	min R (mm)	Weight (kg)
12	B	467	280	487	95	1200	310
18	C	567	280	487	144	1200	320
24	D	667	352	559	193	1400	335
30	E	787	352	559	252	1400	350

min R is minimum rail gauge when service platform or second brake is supplied.
Standard rail gauges are 1200, 1400, 1700 and 2000 mm