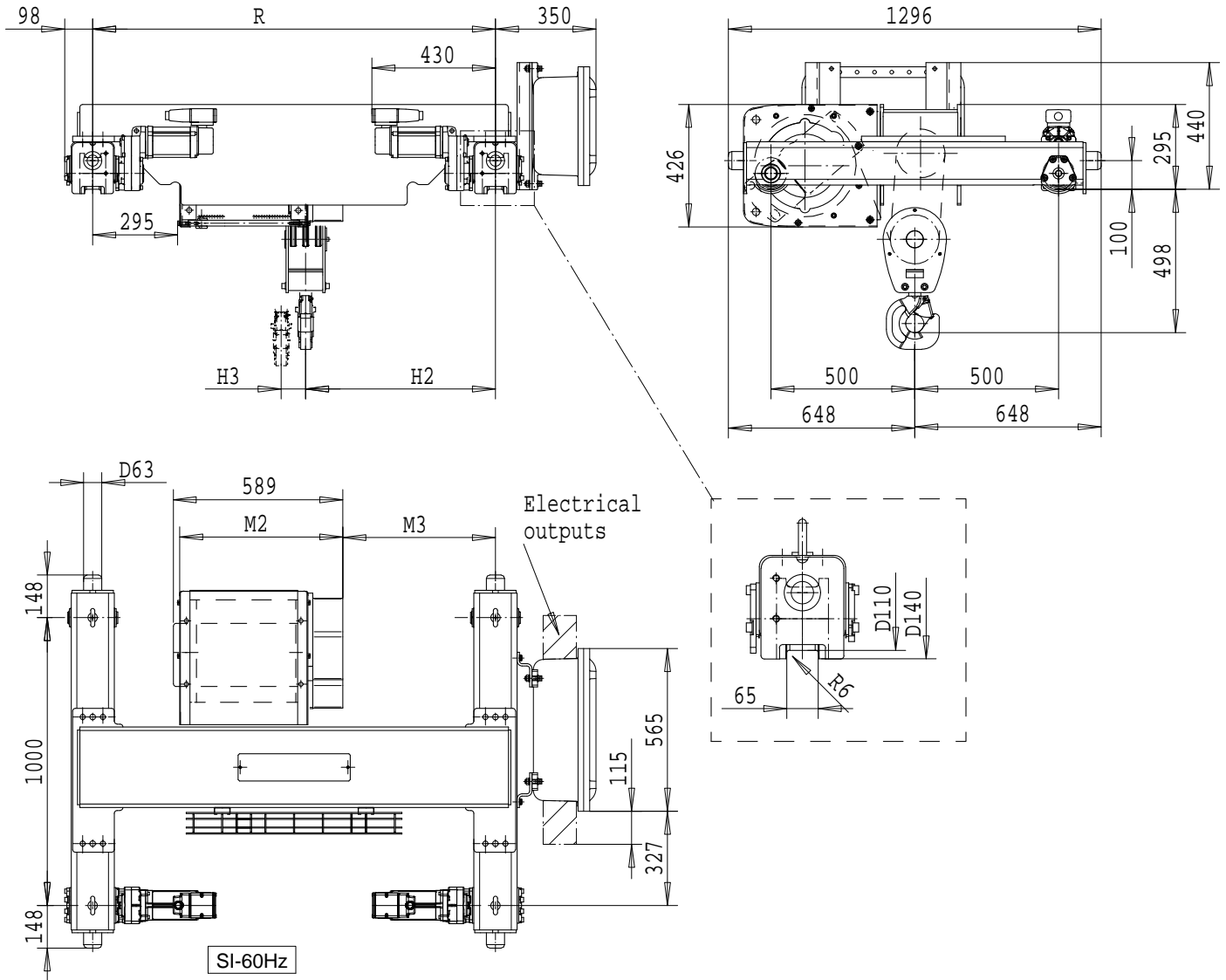


R&M SPACEMASTER *EX*

DOUBLE GIRDER, 6 PART SINGLE
SX4 EX 061...D0



SI-60Hz

Load (kg)	Class Fem/ISO	Hoisting speed (m/min)
6000	3m/M6	3.8/0.6
7500	2m/M5	3.8/0.6

HOL (m)	Length code	M2 (mm)	M3 (mm)	H2 (mm)	H3 (mm)	min R (mm)	Weight (kg)
6	C	567	531	660	49	1400	530
8	D	667	681	810	65	1700	570
10	E	787	831	960	85	2000	600

min R is minimum rail gauge when service platform or second brake is supplied.

Standard rail gauges are 1200, 1400, 1700 and 2000