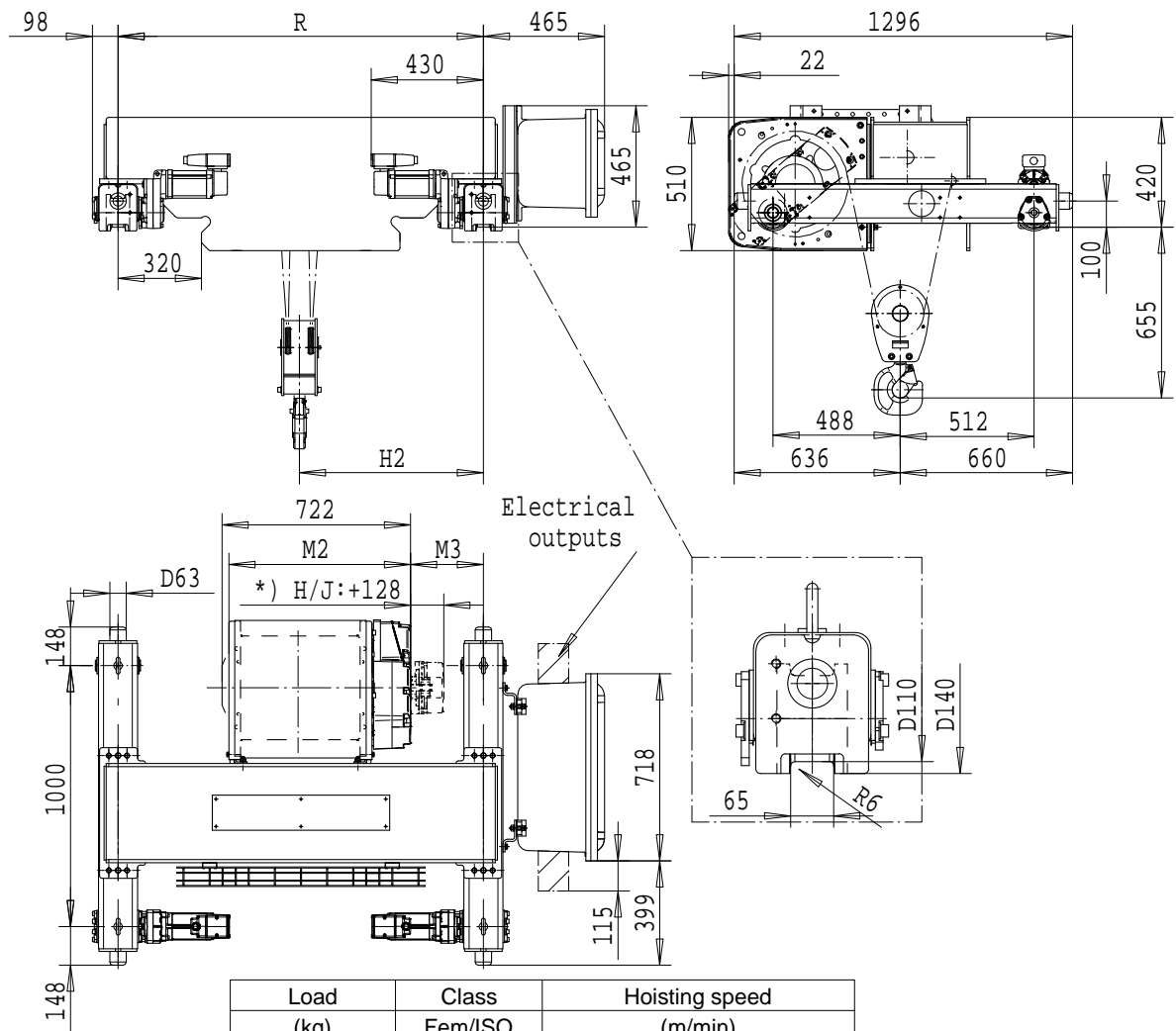


R&M SPACEMASTER EX

DOUBLE GIRDER, 2 PART DOUBLE
SX5 EX 022...D0



Load (kg)	Class Fem/ISO	Hoisting speed (m/min)	
		4000	3m/M6
5000	2m/M5	12/2	19/3.2
+ weight (kg):		-	30

HOL (m)	Length code	M2 (mm)	M3 (mm)	H2 (mm)	min R (mm)	Weight (kg)
8.5	D	697	279	705	1400	720
13	E	817	217	705	1400	780
18	F	967	292	855	1700	790
25	G	1157	197	855	1700	850
33.5	H	1407	256	1036	2000	880
46	J	1757	256	1211	2400	985

min R is minimum rail gauge when service platform or second brake is supplied.

Standard rail gauges are 1400, 1700, 2000 and 2400

The brake is mounted to the gearcase on length H and J hoists.