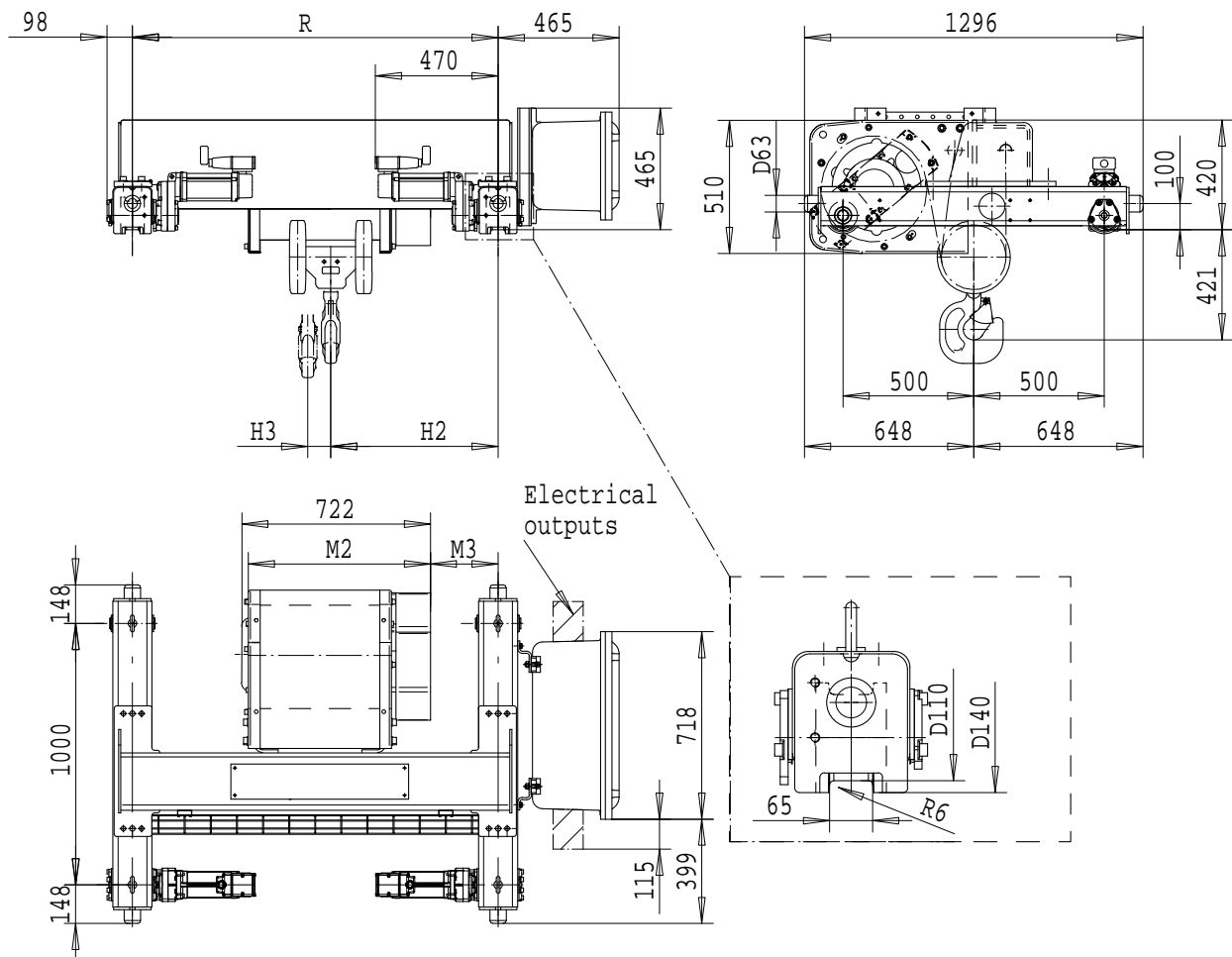


# R&M SPACEMASTER *EX*

DOUBLE GIRDER, 4 PART SINGLE  
SX5 EX 041...D0



SI-60Hz

Load (kg)	Class Fem/ISO	Hoisting speed (m/min)	
6300	3m/M6	6/1	9.5/1.6
8000	3m/M6	6/1	9.5/1.6
10000	2m/M5	6/1	9.5/1.6
+ weight (kg):		-	30

HOL (m)	Length code	M2 (mm)	M3 (mm)	H2 (mm)	H3 (mm)	min R (mm)	Weight (kg)
9	D	697	259	640	88	1400	670
12	E	817	259	640	118	1400	700
16	F	967	372	753	156	1700	745
20	G	1157	522	903	204	2000	785

min R is minimum rail gauge when service platform or second brake is supplied.

Standard rail gauges are 1400, 1700 and 2000