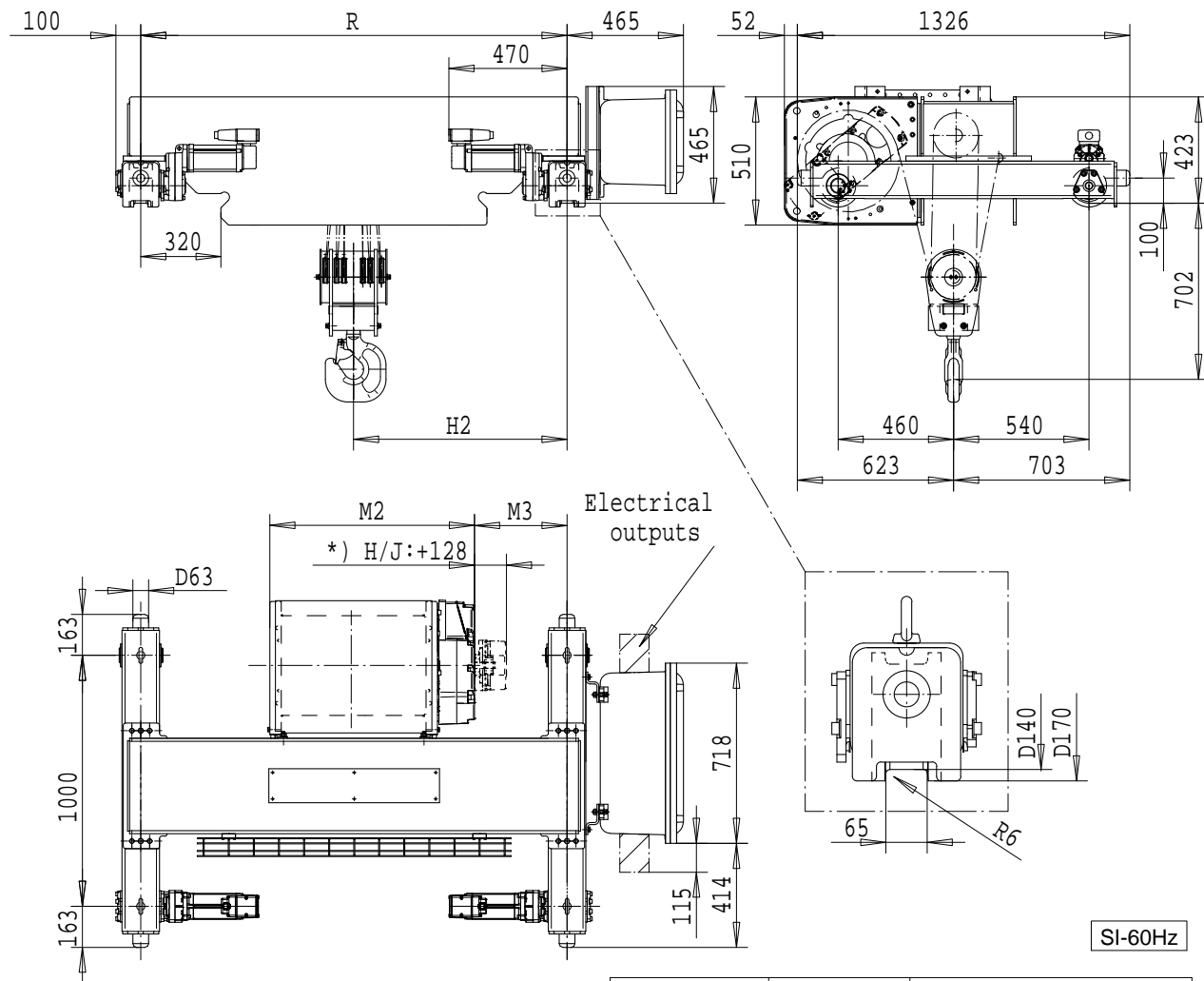


R&M SPACEMASTER EX

DOUBLE GIRDER, 6 PART DOUBLE
SX5 EX 062...D0



Load (kg)	Class Fem/ISO	Hoisting speed (m/min)	
		12000	3m/M6
15000	2m/M5	3.8/0.6	6/1
+ weight (kg):		-	30

HOL (m)	Length code	M2 (mm)	M3 (mm)	H2 (mm)	min R (mm)	Weight (kg)
4	E	817	217	705	1400	760
6	F	967	292	852	1700	870
8	G	1157	197	855	1700	930
11	H	1404	256	1033	2000	960
15	J	1757	256	1208	2400	1065

min R is minimum rail gauge when service platform or second brake is supplied.

Standard rail gauges are 1400, 1700, 2000 and 2400

The brake is mounted to the gearcase on length H and J hoists.