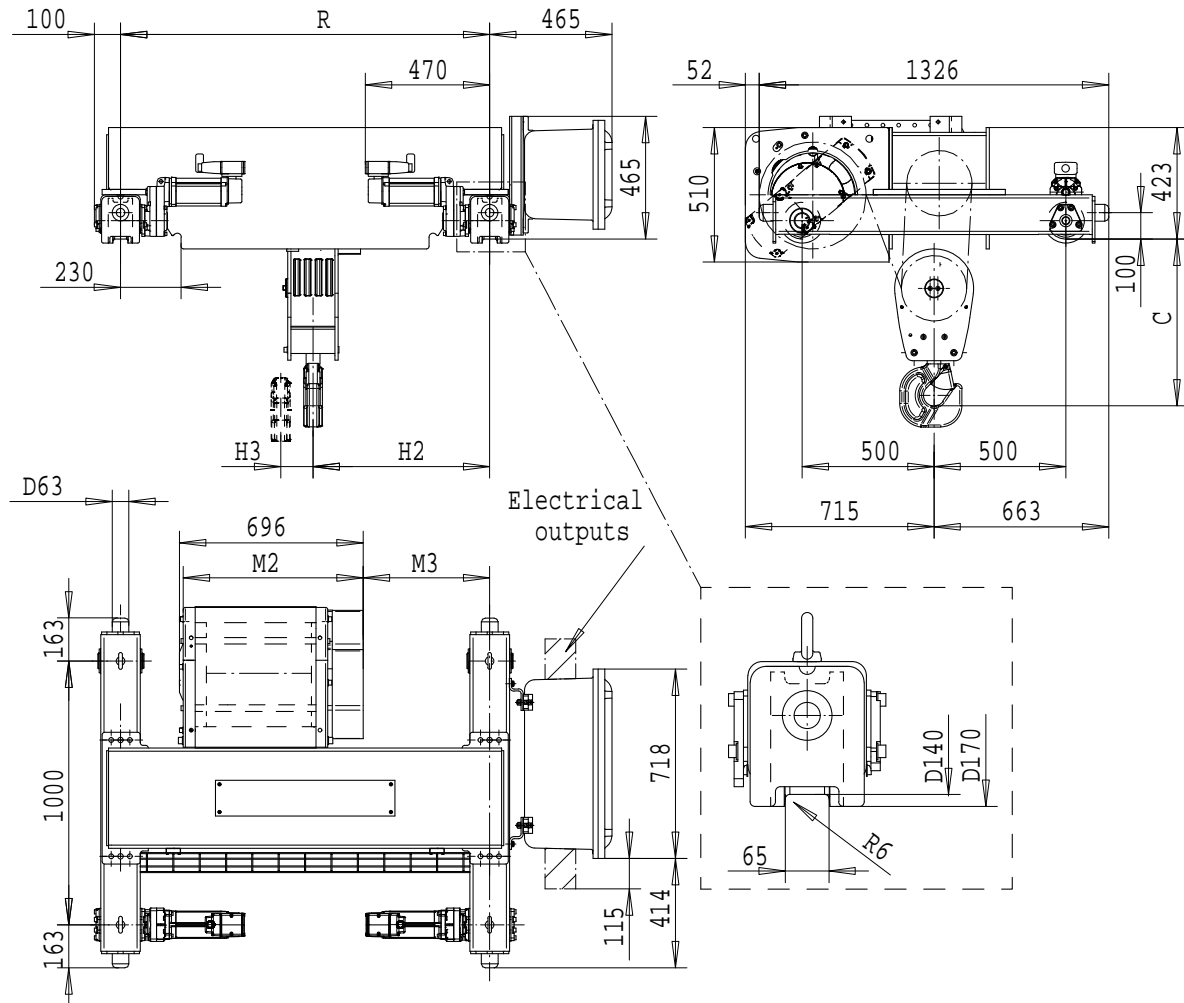


# R&M SPACEMASTER *EX*

DOUBLE GIRDER, 8 PART SINGLE  
SX5 EX 081...D0



SI-60Hz

Load (kg)	Class Fem/ISO	Hoisting speed (m/min)	
		16000	2m/M5
20000	1Am/M4	3/0.5	4.8/0.8
+ weight (kg):		-	30

HOL (m)	Length code	M2 (mm)	M3 (mm)	H2 (mm)	H3 (mm)	C (mm)	min R (mm)	Weight (kg)
4.5	D	682	480	668	44	632	1400	780
6	E	802	630	818	53	632	1700	825
8	F	952	770	948	76	682	2000	860
10	G	1142	970	1148	98	682	2400	890

min R is minimum rail gauge when service platform or second brake is supplied.  
Standard rail gauges are 1400, 1700, 2000, and 2400