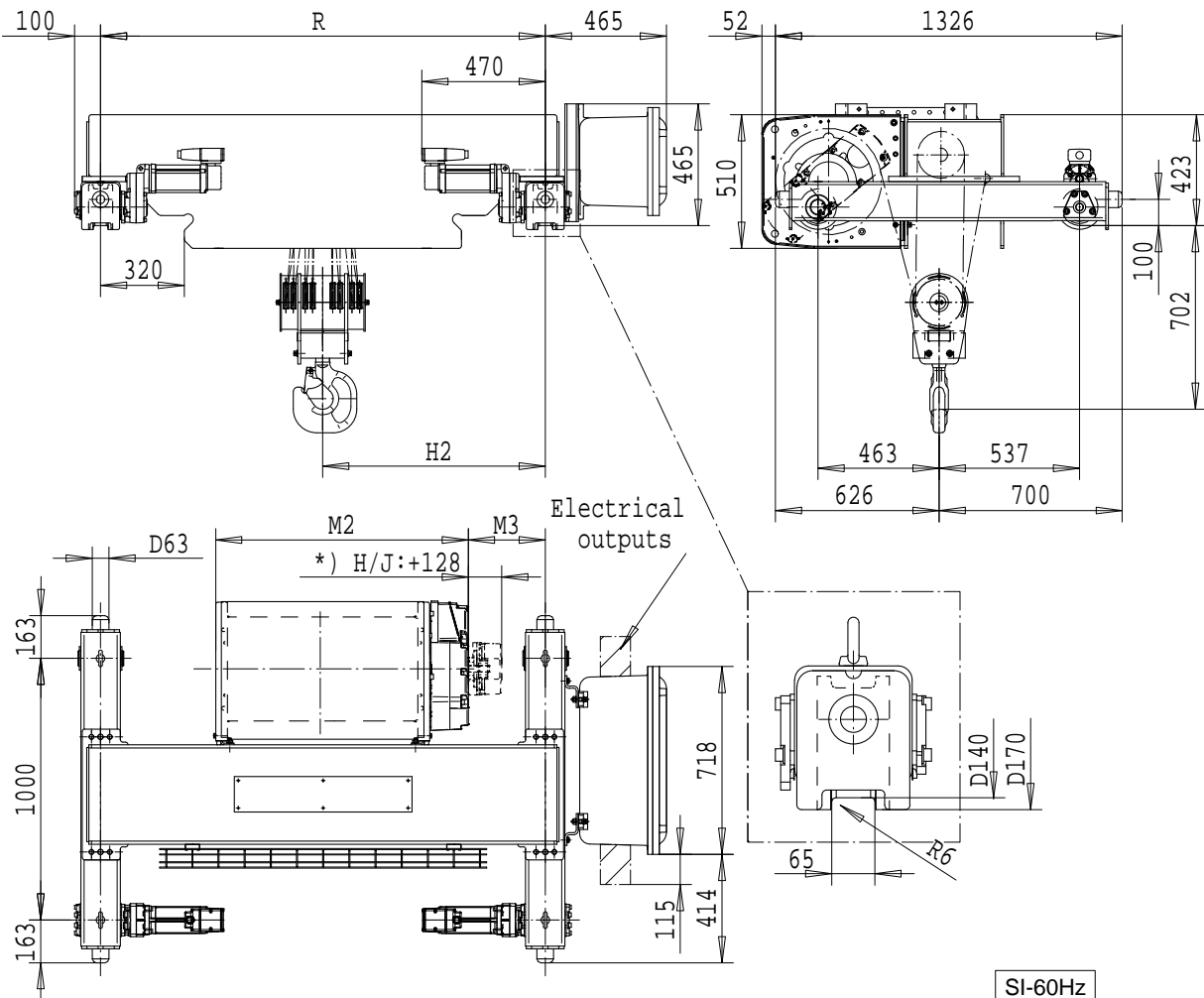


R&M SPACEMASTER EX

DOUBLE GIRDER, 8 PART DOUBLE
SX5 EX 082...D0



Load (kg)	Class Fem/ISO	Hoisting speed (m/min)	
		16000	2m/M5
20000	1Am/M4	3/0.5	4.8/0.8
+ weight (kg):		-	30

HOL (m)	Length code	M2 (mm)	M3 (mm)	H2 (mm)	min R (mm)	Weight (kg)
4.5	F	967	292	851	1700	890
6	G	1157	197	855	1700	950
8	H	1407	256	1032	2000	980
11.5	J	1757	256	1207	2400	1085

min R is minimum rail gauge when service platform or second brake supplied.

Standard rail gauges are 1700, 2000 and 2400

The brake is mounted to the gearcase on length H and J hoists.