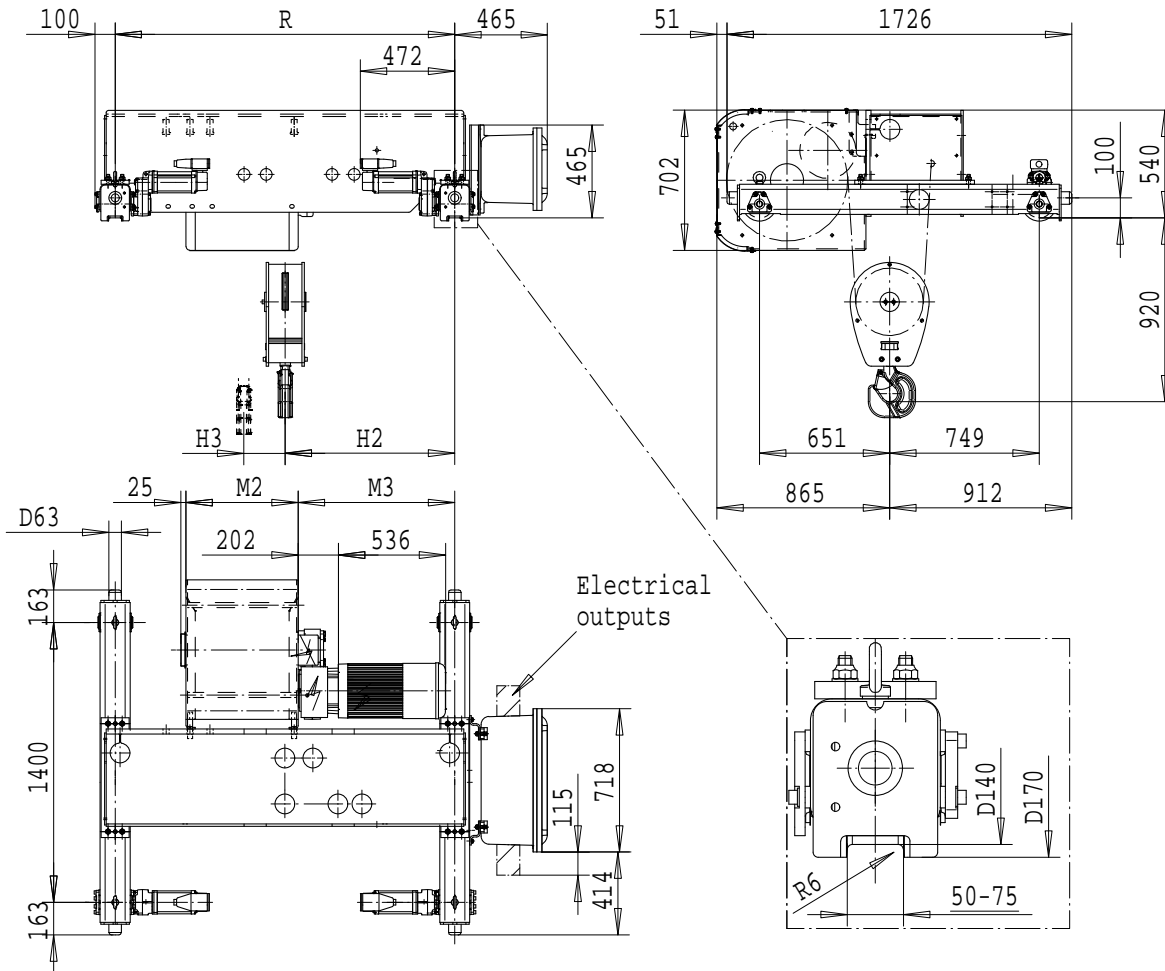


R&M SPACEMASTER EX

DOUBLE GIRDER, 2 PART SINGLE
SX6 EX 021...D0



Load (kg)	Class Fem/ISO	Hoisting speed (m/min)	
		9.5/1.6	12/2
6300	3m/M6	9.5/1.6	12/2
8000	2m/M5	9.5/1.6	12/2
10000	1Am/M4	9.5/1.6	-

SI-60Hz

HOL (m)	Length code	M2 (mm)	M3 (mm)	H2 (mm)	H3 (mm)	min R-max R (mm)	Weight (kg)
15.5	C	462	658	723	139	1400-2400	1600
21	D	562	784	859	188	1700-2400	1650
28	E	682	784	859	251	1700-3100	1715
36	F	832	934	985	322	2000-3800	1820
47	G	1022	1144	1141	421	2400-4200	1930
61	H	1272	1480	1468	546	3100-4200	2100
80.5	J	1622	1544	1567	721	3400-4200	2230
97	K	1922	1970	1929	868	4200	2300

min R is minimum rail gauge when service platform is supplied. Weight calculated at minR. Weight increases with longer gauges. Standard rail gauges are 1400, 1700, 2000, 2400, 2700, 3100, 3800, and 4200

R&M reserves the right to alter or amend the above information without notice