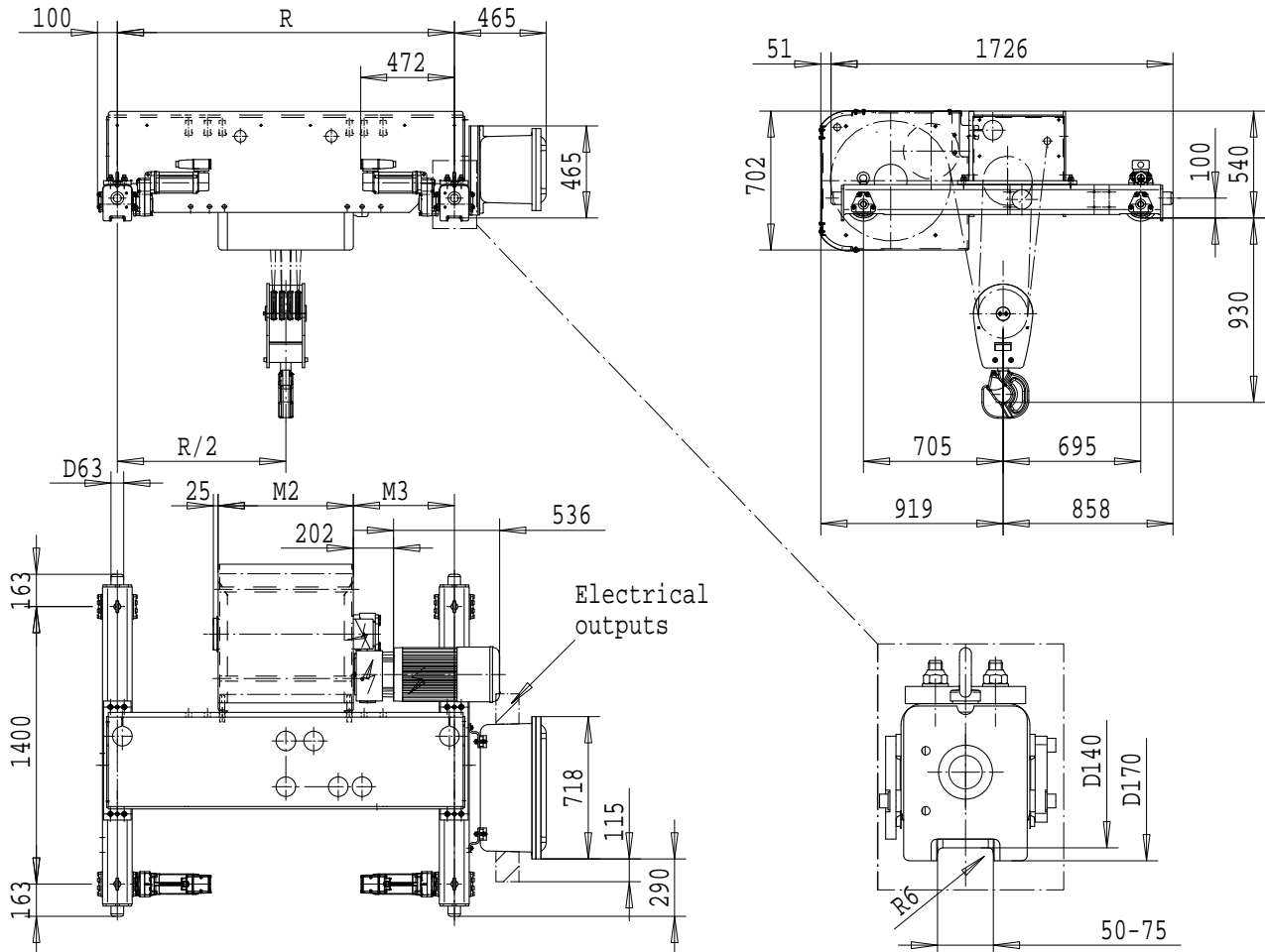


R&M SPACEMASTER EX

DOUBLE GIRDER, 4 PART DOUBLE
SX6 EX 042...D0



Load (kg)	Class	Hoisting speed (m/min)	
	Fem/ISO		
12500	3m/M6	4.8/0.8	6/1
16000	2m/M5	4.8/0.8	6/1
20000	1Am/M4	4.8/0.8	-

SI-60Hz

HOL (m)	Length code	M2 (mm)	M3 (mm)	min R-max R (mm)	Weight (kg)
8	E	682	359	1400-2400	1750
11	F	832	434	1700-2400	1830
14.5	G	1022	339	1700-2700	1930
19.5	H	1272	364	2000-3100	2030
26	J	1622	389	2400-3400	2150
31.5	K	1922	389	2700-4200	2250
38.5	L	2272	414	3100-4200	2400
43	M	2522	439	3400-4200	2500
49	N	2822	489	3800-4200	2650

min R is minimum rail gauge when service platform is supplied. Weight calculated at minR. Weight increases with longer gauges. Standard rail gauges are 1400, 1700, 2000, 2400, 2700, 3100, 3400, 3800, and 4200

R&M reserves the right to alter or amend the above information without notice