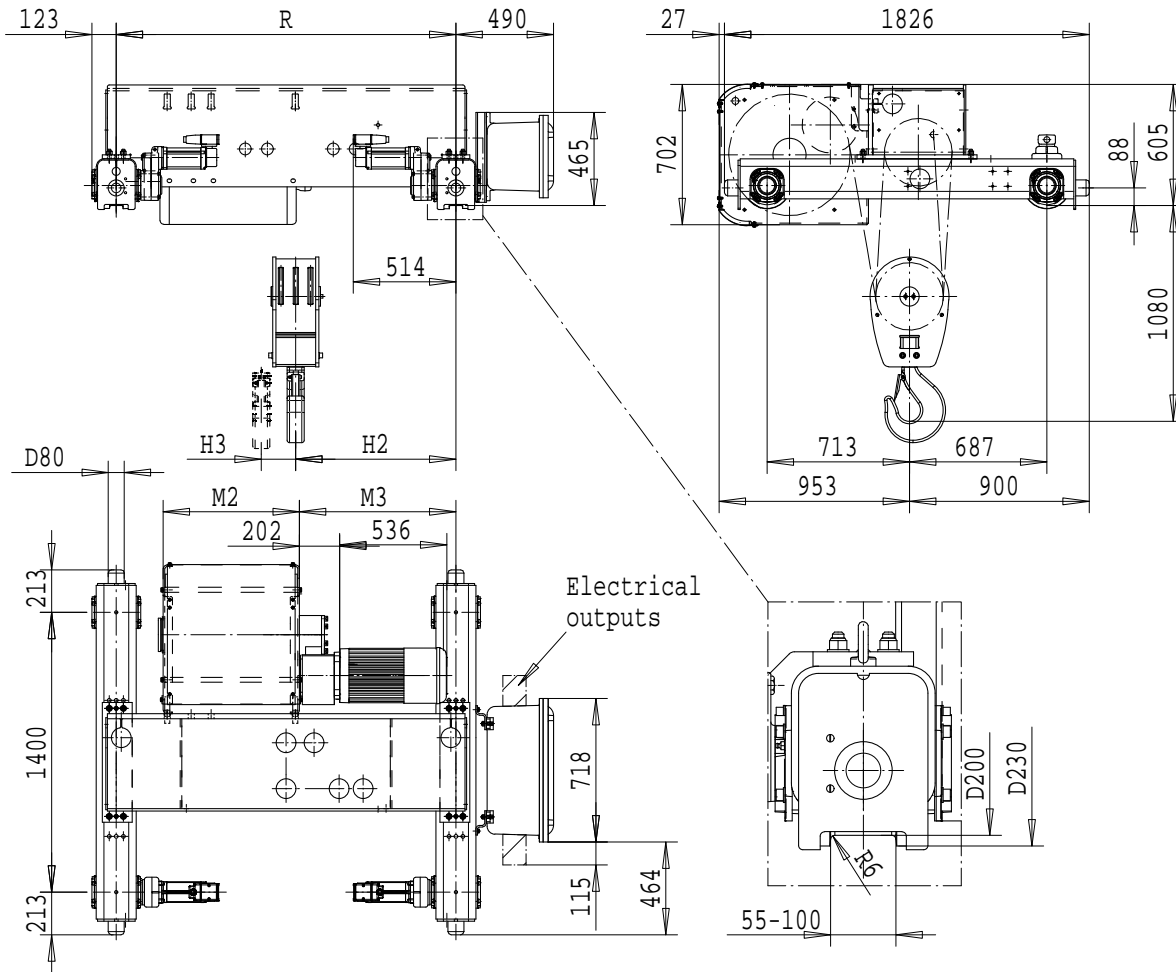


# R&M SPACEMASTER EX

DOUBLE GIRDER, 6 PART SINGLE  
SX6 EX 061...D0



Load (kg)	Class Fem/ISO	Hoisting speed (m/min)	
		3/0.5	3.8/0.6
20000	3m/M6		

HOL (m)	Length code	M2 (mm)	M3 (mm)	H2 (mm)	H3 (mm)	min R-max R (mm)	Weight (kg)
5	C	462	658	678	46	1400-2400	1800
7	D	562	784	810	63	1700-2400	1850
9	E	682	784	810	84	1700-3100	1900
12	F	832	934	936	107	2000-3800	2000
15.5	G	1022	1144	1117	140	2400-4200	2250
20	H	1272	1480	1424	182	3100-4200	2400
26.5	J	1622	1544	1543	240	3800-4200	2550
32	K	1922	1970	1944	289	4200	2600

min R is minimum rail gauge when service platform is supplied. Weight calculated at minR. Weight increases with longer gauges. Standard rail gauges are 1400, 1700, 2000, 2400, 2700, 3100, 3800, and 4200

R&M reserves the right to alter or amend the above information without notice