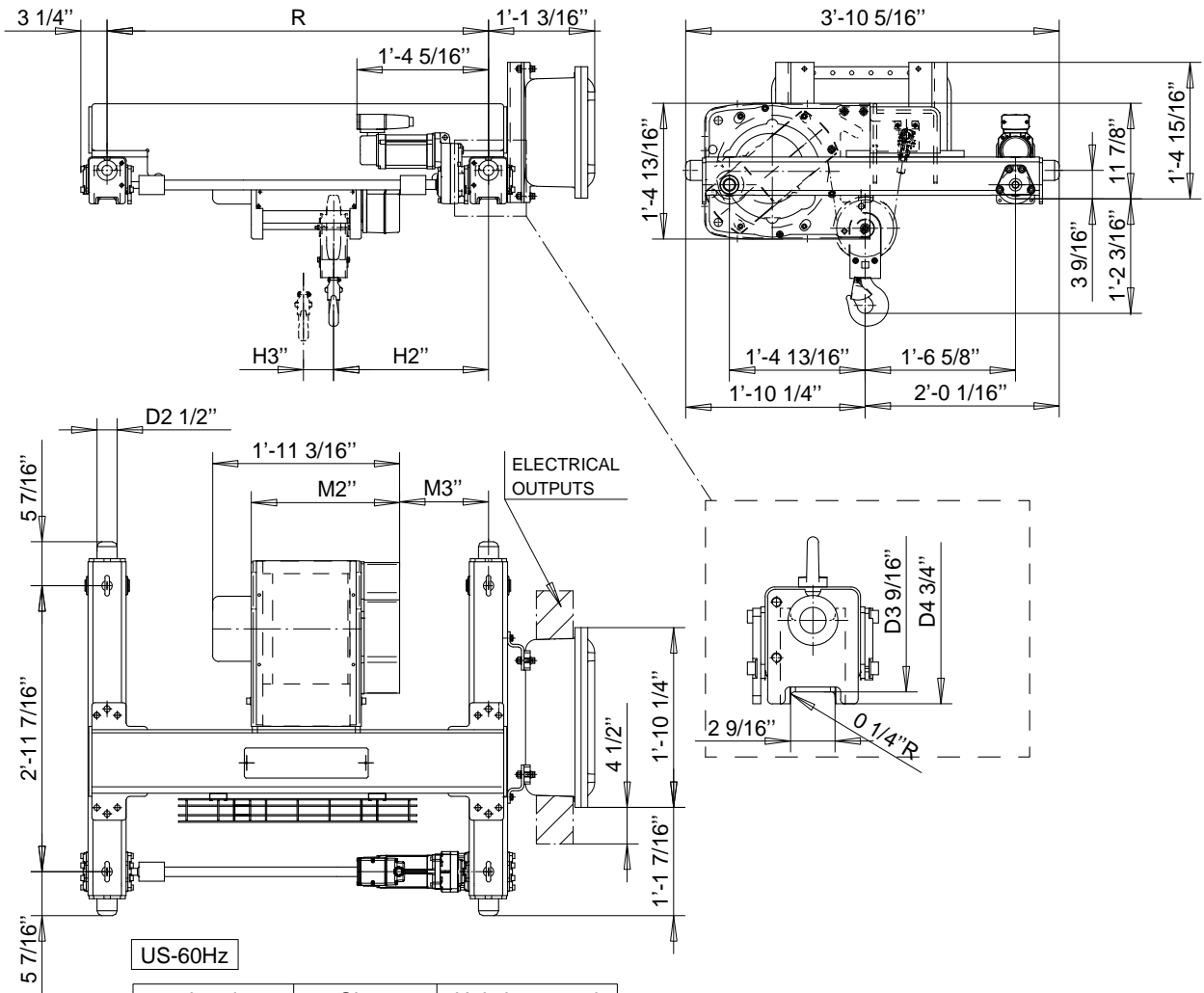


R&M SPACEMASTER EX

DOUBLE GIRDER, 2 PART SINGLE
SX4 EX 021...D0



Load (TON)	Class ASME	Hoisting speed (fpm)
1 1/2	H4+	40/6.7
2	H4+	40/6.7
2 1/2	H4	40/6.7

HOL (ft-in)	Length code	M2 (in)	M3 (in)	H2 (in)	H3 (in)	min R (in)	Weight (lb)
39'-4"	B	18 3/8	11 1/16	19 3/16	3 3/4	47 1/4	683
59'-0"	C	22 5/16	11 1/16	19 3/16	5 11/16	47 1/4	705
78'-8"	D	26 1/4	13 7/8	22	7 5/8	55 1/8	739
98'-5"	E	31	13 7/8	22	9 15/16	55 1/8	772

min R is minimum rail gauge when service platform or second brake is supplied.
Standard rail gauges are 47 1/4", 55 1/8", 66 15/16" and 78 3/4"