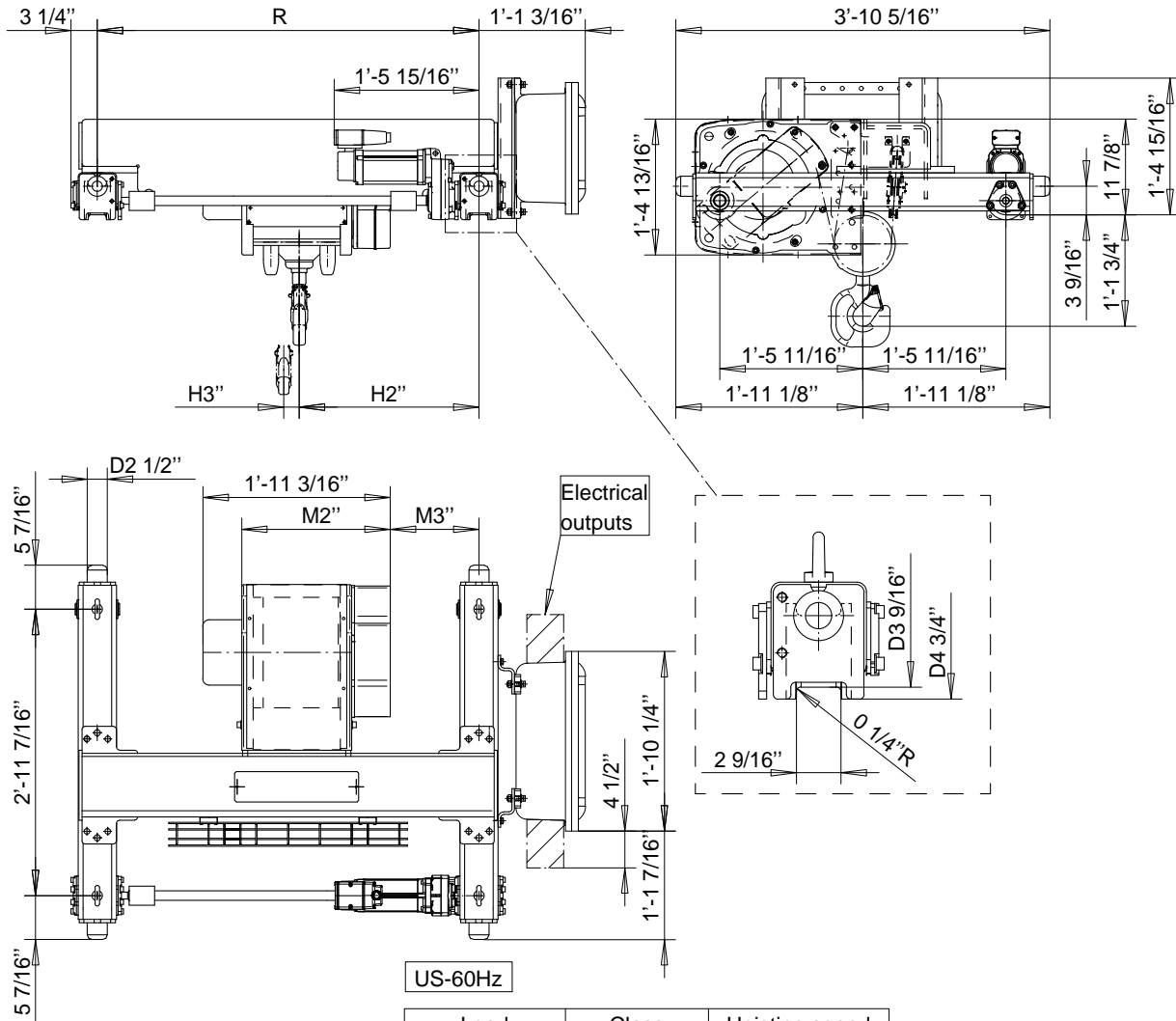


R&M SPACEMASTER EX

DOUBLE GIRDER, 4 PART SINGLE SX4 EX 041...D0



Load (TON)	Class ASME	Hoisting speed (fpm)
3	H4+	20/3.1
4	H4+	20/3.1
5	H4	20/3.1

HOL (ft-in)	Length code	M2 (in)	M3 (in)	H2 (in)	H3 (in)	min R (in)	Weight (lb)
19'-8"	B	18 3/8	11 1/16	22 1/4	1 15/16	47 1/4	695
29'-6"	C	22 5/16	11 1/16	22 1/4	2 15/16	47 1/4	717
39'-4"	D	26 1/4	13 7/8	25 1/16	3 7/8	55 1/8	750
49'-2"	E	31	13 7/8	25 1/16	5 1/16	55 1/8	794

min R is minimum rail gauge when service platform or second brake is supplied.
Standard rail gauges are 47 1/4", 55 1/8", 66 15/16" and 78 3/4"