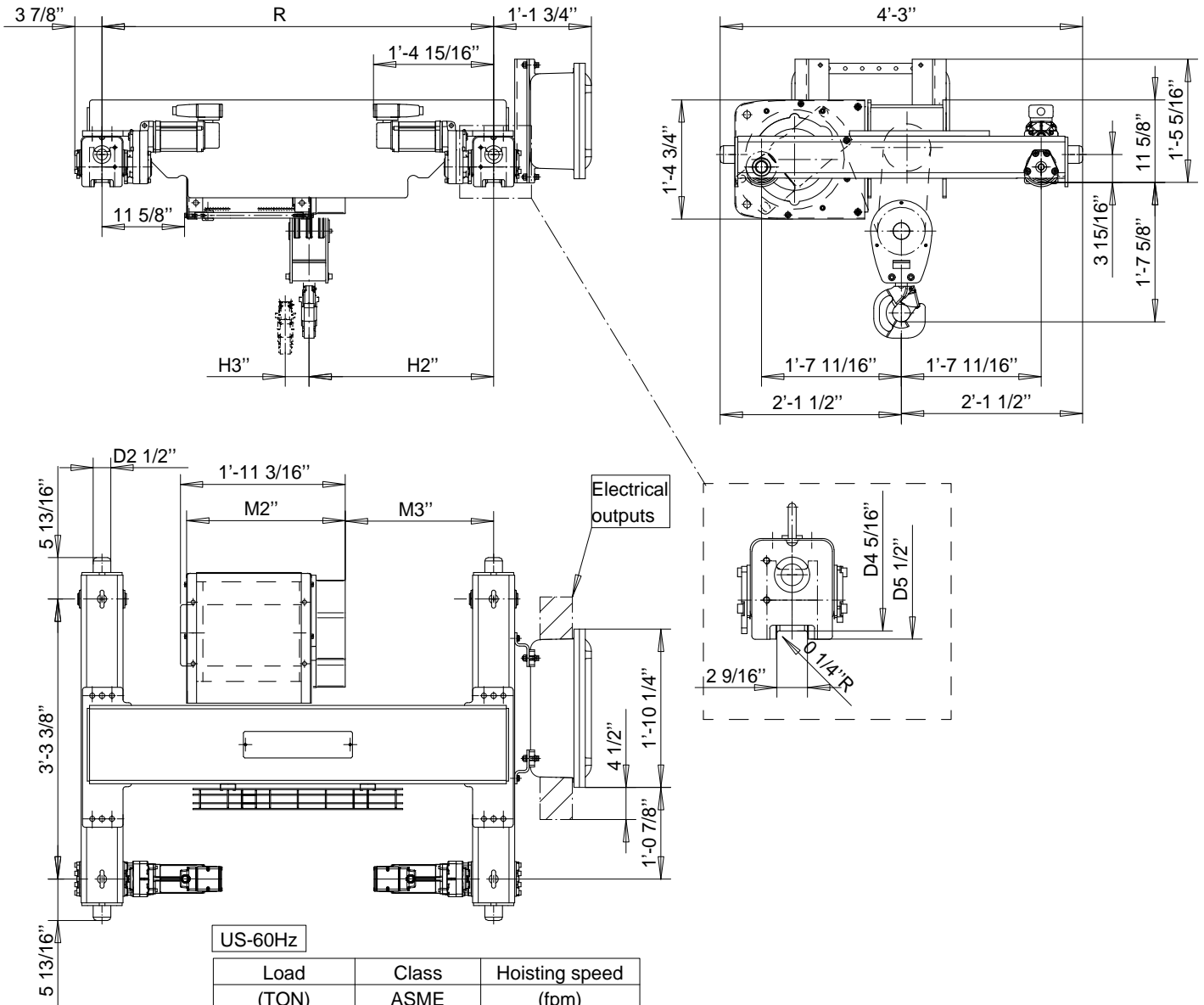


R&M SPACEMASTER *EX*

DOUBLE GIRDER, 6 PART SINGLE SX4 EX 061...D0



US-60Hz

Load (TON)	Class ASME	Hoisting speed (fpm)
6	H4+	12.5/1.9
7 1/2	H4	12.5/1.9

HOL (ft-in)	Length code	M2 (in)	M3 (in)	H2 (in)	H3 (in)	min R (in)	Weight (lb)
19'-8"	C	22 5/16	20 15/16	26	1 15/16	47 1/4	1168
26'-2"	D	26 1/4	26 13/16	31 7/8	2 9/16	66 15/16	1257
32'-9"	E	31	32 3/4	37 13/16	3 7/16	78 3/4	1323

min R is minimum rail gauge when service platform or second brake is supplied.

Standard rail gauges are 47 1/4", 55 1/8", 66 15/16" and 78 3/4"

R&M reserves the right to alter or amend the above information without notice