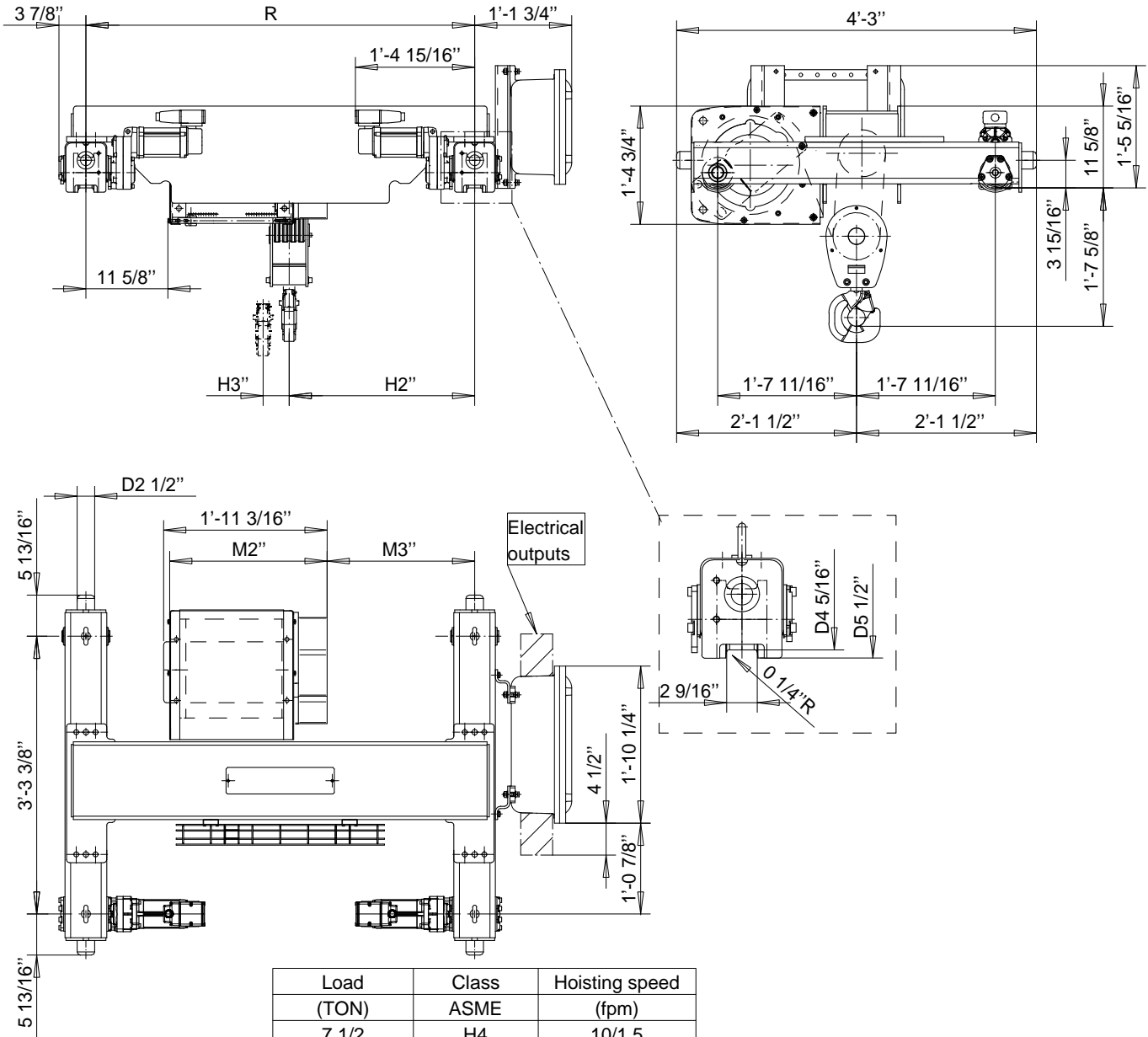


R&M SPACEMASTER EX

DOUBLE GIRDER, 8 PART SINGLE SX4 EX 081...D0



Load (TON)	Class ASME	Hoisting speed (fpm)
7 1/2	H4	10/1.5
10	H3	10/1.5

US-60Hz

HOL (ft-in)	Length code	M2 (in)	M3 (in)	H2 (in)	H3 (in)	min R (in)	Weight (lb)
14'-9"	C	22 5/16	20 15/16	26 5/16	1 1/2	47 1/4	655
19'-8"	D	26 1/4	26 13/16	32 1/4	1 15/16	66 15/16	700
24'-7"	E	31	32 3/4	38 1/8	2 1/2	78 3/4	740

min R is minimum rail gauge when service platform or second brake is supplied.
Standard rail gauges are 47 1/4", 55 1/8", 66 15/16" and 78 3/4"