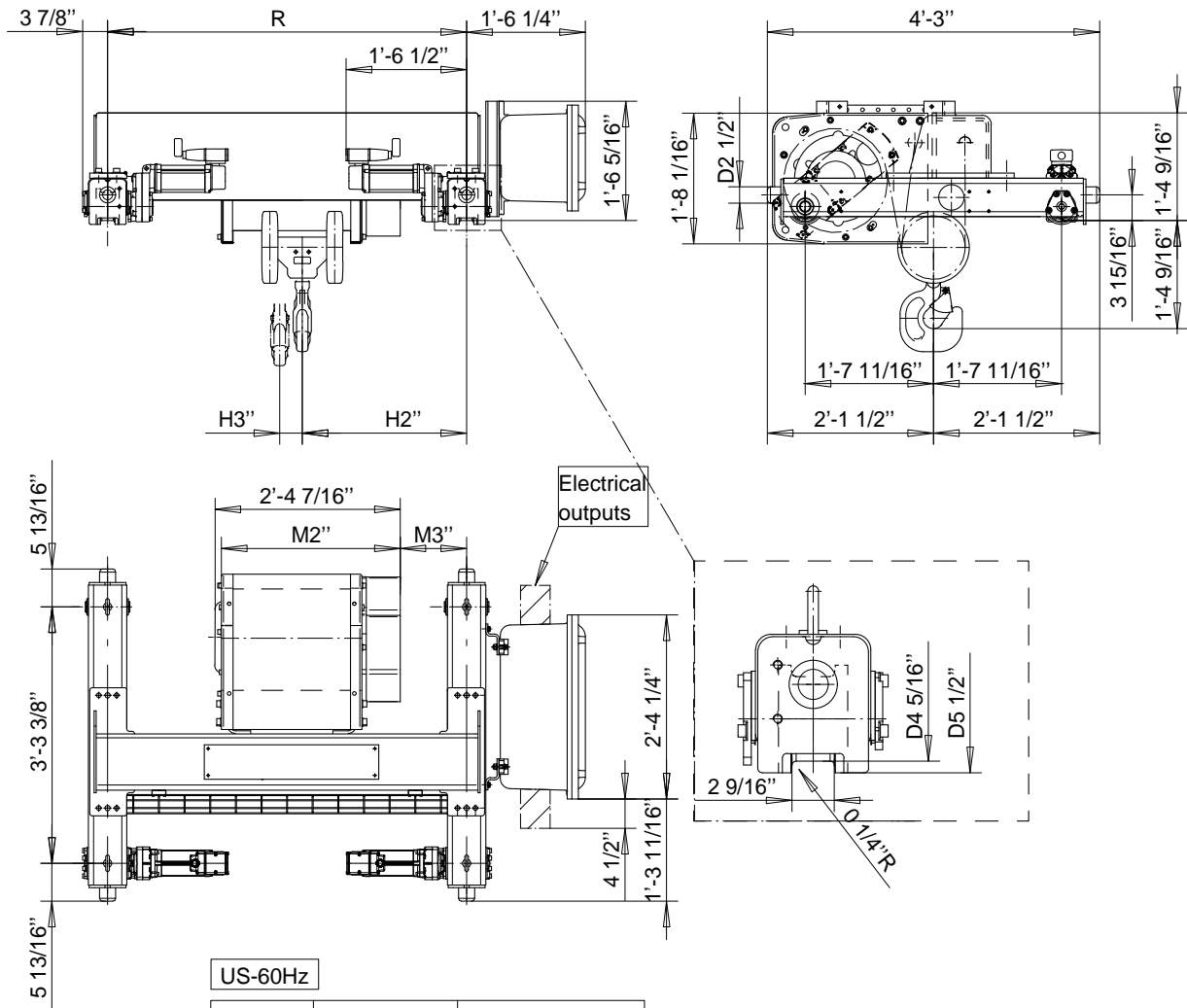


R&M SPACEMASTER EX

DOUBLE GIRDER, 4 PART SINGLE
SX5 EX 041...D0



US-60Hz

Load (TON)	Class ASME	Hoisting speed (fpm)	
6	H4+	20/3.1	30/4.9
7 1/2	H4+	20/3.1	30/4.9
10	H4	20/3.1	30/4.9
additional weight (lb):		-	66

HOL (ft-in)	Length code	M2 (in)	M3 (in)	H2 (in)	H3 (in)	min R (in)	Weight (lb)
29'-6"	D	27 7/16	10 3/16	25 3/16	3 1/2	55 1/8	1477
39'-4"	E	32 3/16	10 3/16	25 3/16	4 11/16	55 1/8	1543
52'-5"	F	38 1/16	14 11/16	29 11/16	6 3/16	66 15/16	1642
65'-7"	G	45 9/16	20 9/16	35 9/16	8 1/16	78 3/4	1731

min R is minimum rail gauge when service platform or second brake is supplied.

Standard rail gauges are 55 1/8", 66 15/16" and 78 3/4"