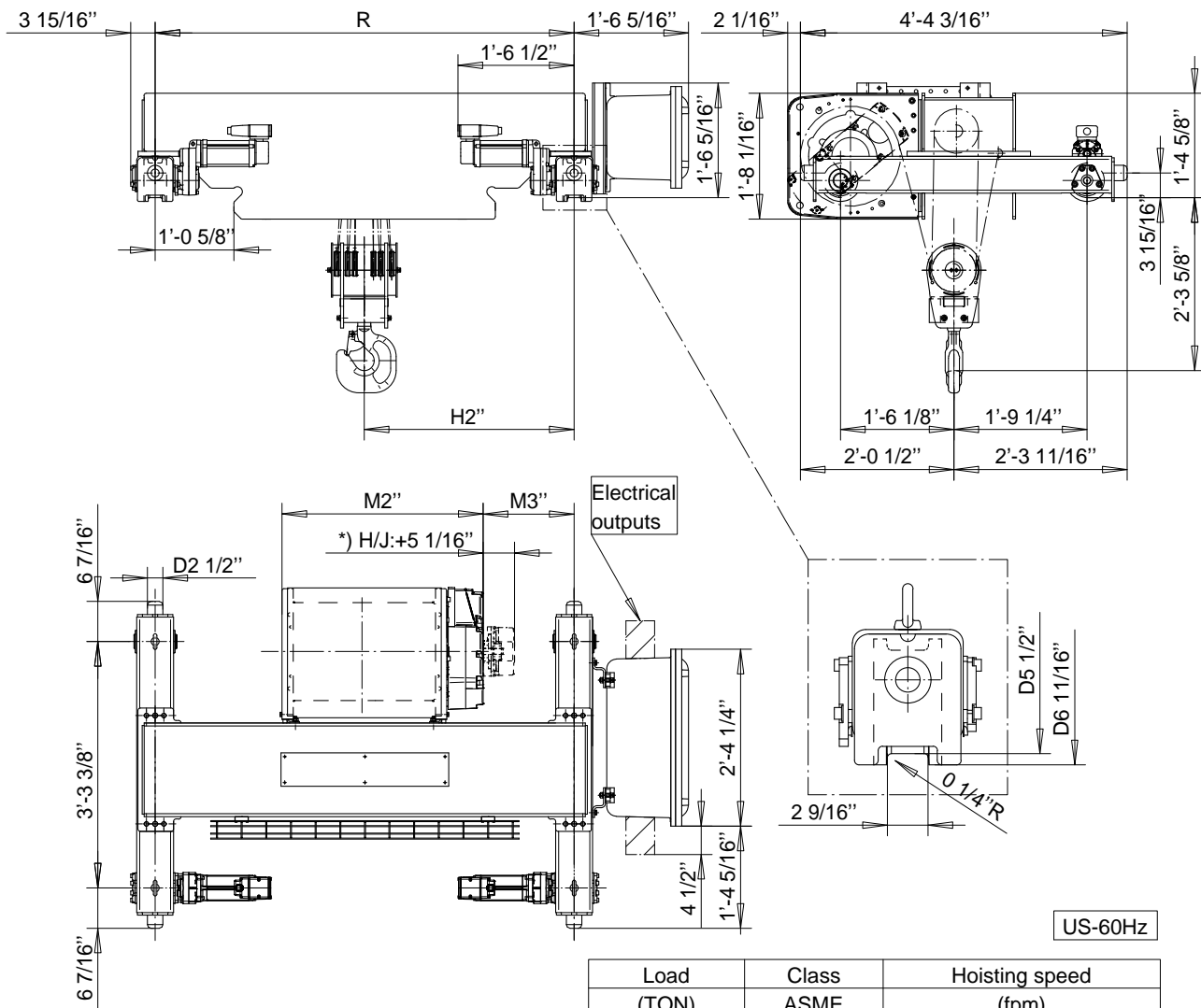


R&M SPACEMASTER EX

DOUBLE GIRDER, 6 PART DOUBLE
SX5 EX 062...D0



Load (TON)	Class ASME	Hoisting speed (fpm)	
		12	H4+
15	H4	12.5/1.9	20/3.1
additional weight (lb):		-	66

HOL (ft-in)	Length code	M2 (in)	M3 (in)	H2 (in)	min R (in)	Weight (lb)
13'-1"	E	32 3/16	8 9/16	27 3/4	55 1/8	1676
19'-8"	F	38 1/16	11 1/2	33 9/16	66 15/16	1918
26'-2"	G	45 9/16	7 3/4	33 11/16	66 15/16	2050
36'-1"	H	55 1/4	10 1/16	40 11/16	78 3/4	2116
49'-2"	J	69 3/16	10 1/16	47 9/16	94 1/2	2348

min R is minimum rail gauge when service platform or second brake is supplied.

Standard rail gauges are 55 1/8", 66 15/16", 78 3/4" and 94 1/2"

The brake is mounted to the gearcase on length H and J hoists.