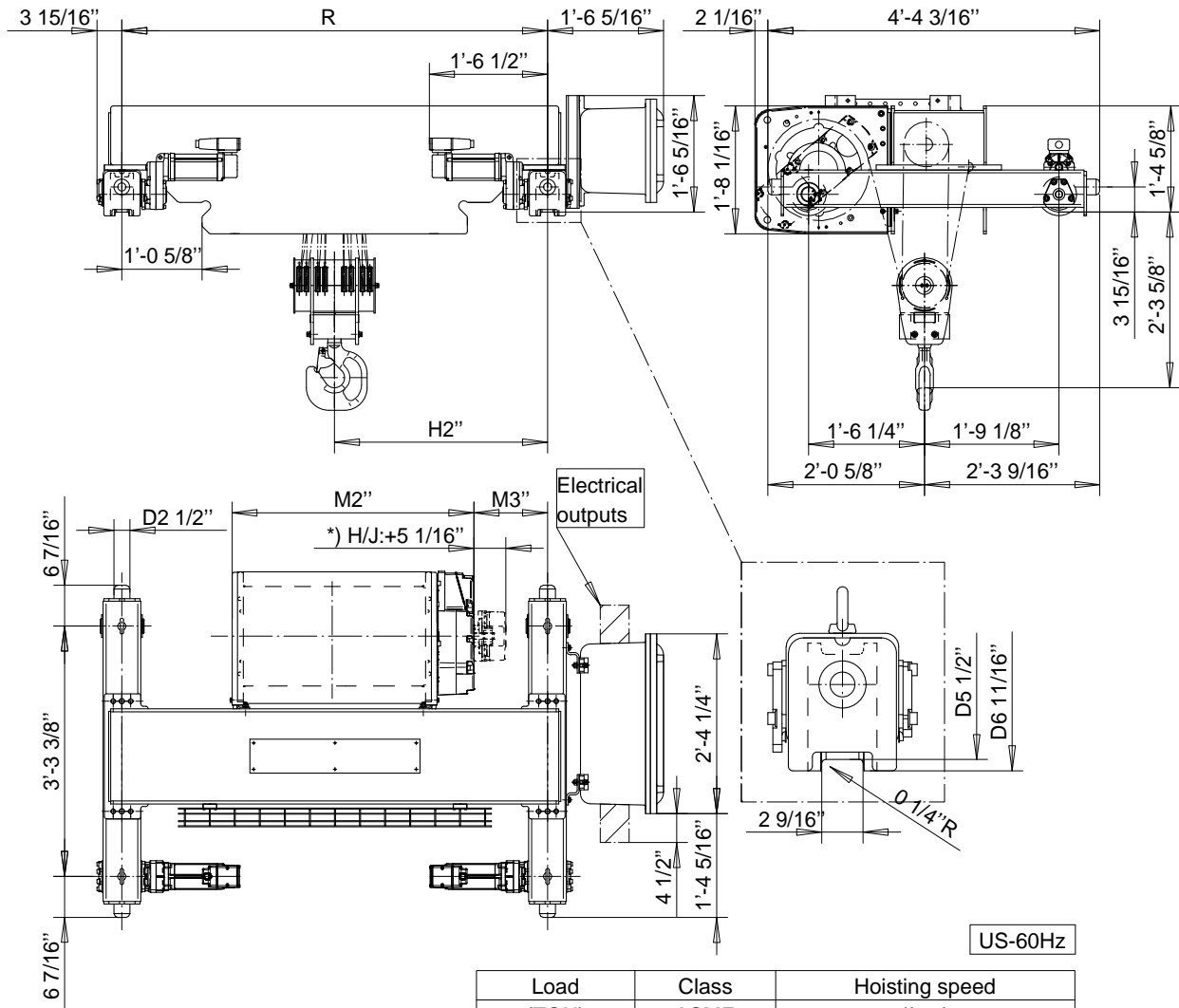


R&M SPACEMASTER EX

DOUBLE GIRDER, 8 PART DOUBLE
SX5 EX 082...D0



Load (TON)	Class ASME	Hoisting speed (fpm)	
		15	H4
20	H3	10/1.5	16/2.4
additional weight (lb):		-	66

HOL (ft-in)	Length code	M2 (in)	M3 (in)	H2 (in)	min R (in)	Weight (lb)
14'-9"	F	38 1/16	11 1/2	33 1/2	66 15/16	1962
19'-8"	G	45 9/16	7 3/4	33 11/1	66 15/16	2094
26'-2"	H	55 3/8	10 1/16	40 5/8	78 3/4	2161
37'-8"	J	69 3/16	10 1/16	47 1/2	94 1/2	2392

min R is minimum rail gauge when service platform or second brake supplied.

Standard rail gauges are 66 15/16", 78 3/4" and 94 1/2"

The brake is mounted to the gearcase on length H and J hoists.