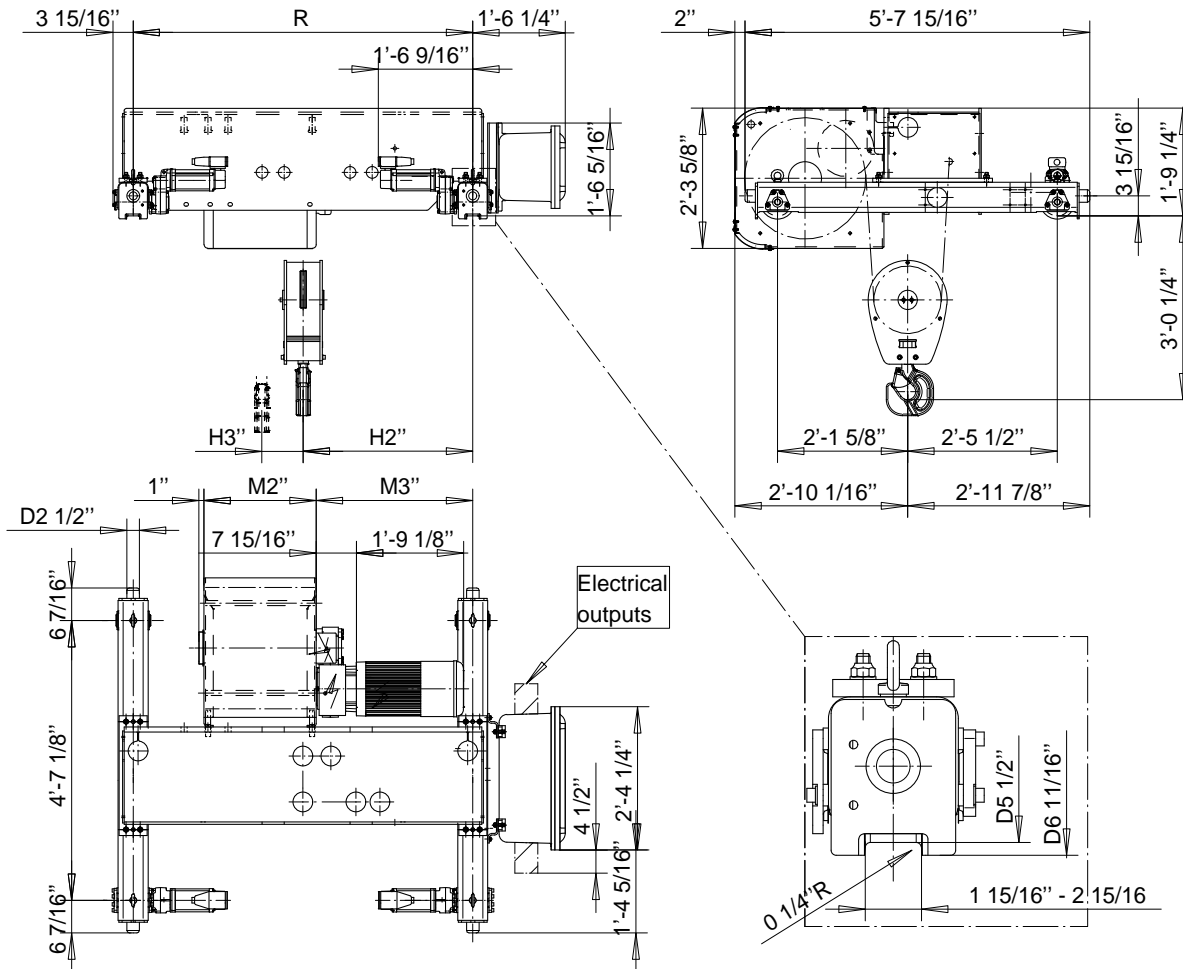


R&M SPACEMASTER EX

DOUBLE GIRDER, 2 PART SINGLE
SX6 EX 021...D0



Load (TON)	Class ASME	Hoisting speed (fpm)	
		30/4.9	40/6.7
6	H4+	30/4.9	40/6.7
7 1/2	H4	30/4.9	40/6.7
10	H3	30/4.9	-

US-60Hz

HOL (ft-in)	Length code	M2 (in)	M3 (in)	H2 (in)	H3 (in)	min R-max R (in)	Weight (lb)
50'-10"	C	18 3/16	25 15/16	28 1/2	5 1/2	47 1/4 - 94 1/2	3527
68'-10"	D	22 1/8	30 7/8	33 13/16	7 7/16	66 15/16 - 94 1/2	3638
91'-10"	E	26 7/8	30 7/8	33 13/16	9 7/8	66 15/16 - 122 1/16	3781
118'-1"	F	32 3/4	36 3/4	38 3/4	12 11/16	94 1/2 - 149 5/8	4012
154'-2"	G	40 1/4	45	44 15/16	16 9/16	94 1/2 - 165 3/8	4255
200'-1"	H	50 1/16	58 1/4	57 13/16	21 1/2	122 1/16 - 165 3/8	4630
264'-1"	J	63 7/8	60 13/16	61 11/16	28 3/8	138 7/8 - 165 3/8	4916
318'-2"	K	75 11/16	77 9/16	75 15/16	34 3/16	165 3/8	5071

min R is minimum rail gauge when service platform is supplied. Weight calculated at minR. Weight increases with longer gauges. Standard rail gauges are 55 1/8", 66 15/16", 78 3/4", 94 1/2", 106 5/16", 122 1/16", 149 5/8", and 165 3/8"

R&M reserves the right to alter or amend the above information without notice