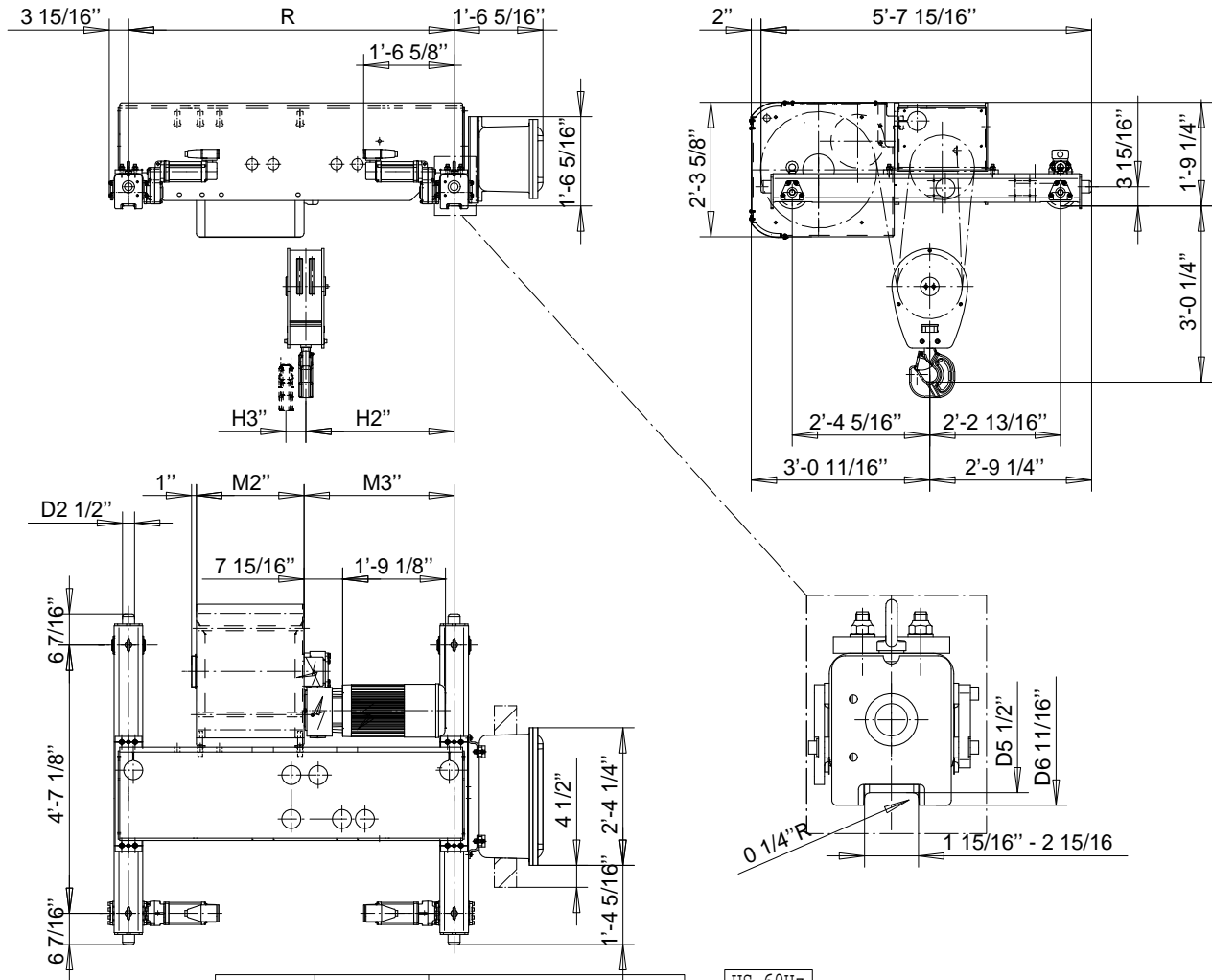


R&M SPACEMASTER EX

DOUBLE GIRDER, 4 PART SINGLE SX6 EX 041...D0



US-60Hz

Load (TON)	Class ASME	Hoisting speed (fpm)	
12 1/2	H4+	16/2.4	20/3.1
15	H4	16/2.4	20/3.1
20	H3	16/2.4	-

HOL (ft-in)	Length code	M2 (in)	M3 (in)	H2 (in)	H3 (in)	min R-max R (in)	Weight (lb)
24'-6"	C	18 3/16	25 15/16	26 5/16	2 3/4	55 1/8 - 94 1/2	3726
34'-5"	D	22 1/8	30 7/8	31	3 3/4	66 15/16 - 94 1/2	3836
45'-11"	E	26 7/8	30 7/8	31	4 15/16	66 15/16 - 122 1/16	3990
59'-0"	F	32 3/4	36 3/4	36	6 3/8	78 3/4 - 149 5/8	4211
77'-1"	G	40 1/4	45	42 1/16	8 1/4	94 1/2 - 165 3/8	4475
100'-0"	H	50 1/16	58 1/4	54 15/16	10 3/4	122 1/16 - 165 3/8	4850
131'-2"	J	63 7/8	60 13/16	58 13/16	14 3/16	133 7/8 - 165 3/8	5137
159'-1"	K	75 11/16	77 9/16	73 1/16	17 1/16	165 3/8	5291

min R is minimum rail gauge when service platform is supplied. Weight calculated at minR. Weight increases with longer gauges. Standard rail gauges are 55 1/8", 66 15/16", 78 3/4", 94 1/2", 106 5/16", 122 1/16", 149 5/8", and 165 3/8"

R&M reserves the right to alter or amend the above information without notice