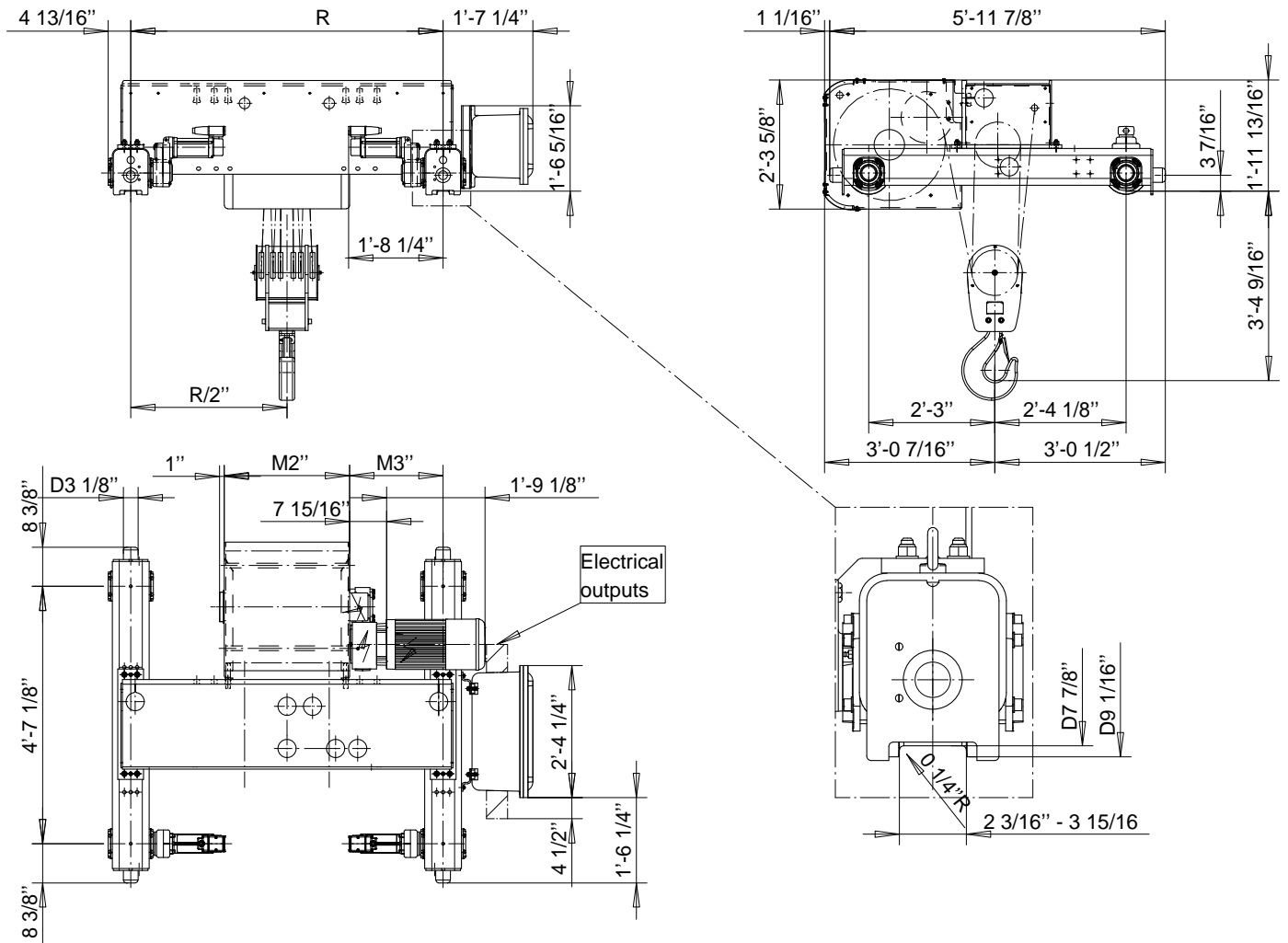


R&M SPACEMASTER EX

DOUBLE GIRDER, 6 PART DOUBLE
SX6 EX 062...D0



US-60Hz

Load (TON)	Class ASME	Hoisting speed	
		(fpm)	
20	H4+	10/1.5	12.5/1.9

HOL (ft-in)	Length code	M2 (in)	M3 (in)	min R-max R (in)	Weight (lb)
18'-1"	E	26 7/8	14 1/8	55 1/8 - 94 1/2	3924
23'-0"	F	32 3/4	17 1/16	66 15/16 - 94 1/2	4079
31'-2"	G	40 1/4	13 3/8	66 15/16 - 106 5/16	4299
42'-8"	H	50 1/16	14 5/16	78 3/4 - 122 1/16	4519
55'-9"	J	63 7/8	15 5/16	94 1/2 - 133 7/8	4806
68'-11"	K	75 11/16	15 5/16	106 5/16 - 165 3/8	5027
83'-8"	L	89 7/16	16 5/16	122 1/16 - 165 3/8	5357
93'-6"	M	99 5/16	17 5/16	133 7/8 - 165 3/8	5578
106'-8"	N	111 1/8	19 1/4	149 5/8 - 165 3/8	5908

min R is minimum rail gauge when service platform is supplied. Weight calculated at minR. Weight increases with longer gauges. Standard rail gauges are 55 1/8", 66 15/16", 78 3/4", 94 1/2", 106 5/16", 122 1/16", 133 7/8", 149 5/8", and 165 3/8"

R&M reserves the right to alter or amend the above information without notice