



R&M Materials Handling, Inc.
4501 Gateway Boulevard
Springfield, Ohio 45502
P.: (937) 328-5100
FAX: (937) 325-5319

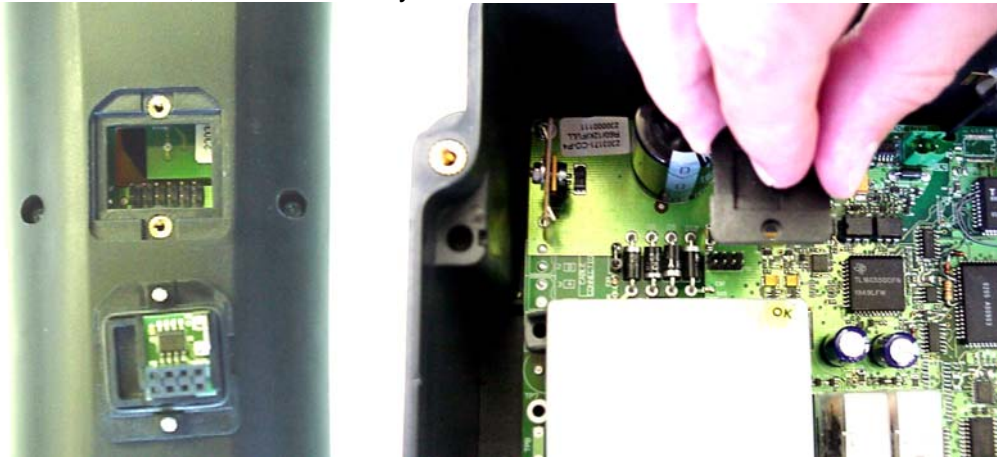
8 EEPROM

8.1 Description

The information in the EEPROM is:

- ID Code
- Allowed Frequency List and Scanning parameters
- Output configuration
- Out of power off time
- Masks

The radio remote control units RADS11, RADF13 and RADH11 have identical EEPROM's, in the transmitter and in the receiver, and in both they are removable



In the transmitter, the EEPROM removing is done from outside of the transmitter, as follows:

1. Remove, from the back of the transmitter the two EEPROM module screws



2. Lift up the EEPROM module using to small screwdrivers



R&M Materials Handling, Inc.
4501 Gateway Boulevard
Springfield, Ohio 45502
P.: (937) 328-5100
FAX: (937) 325-5319



In the receiver, the process is:

1. Remove the 4 screws from the receiver's cover



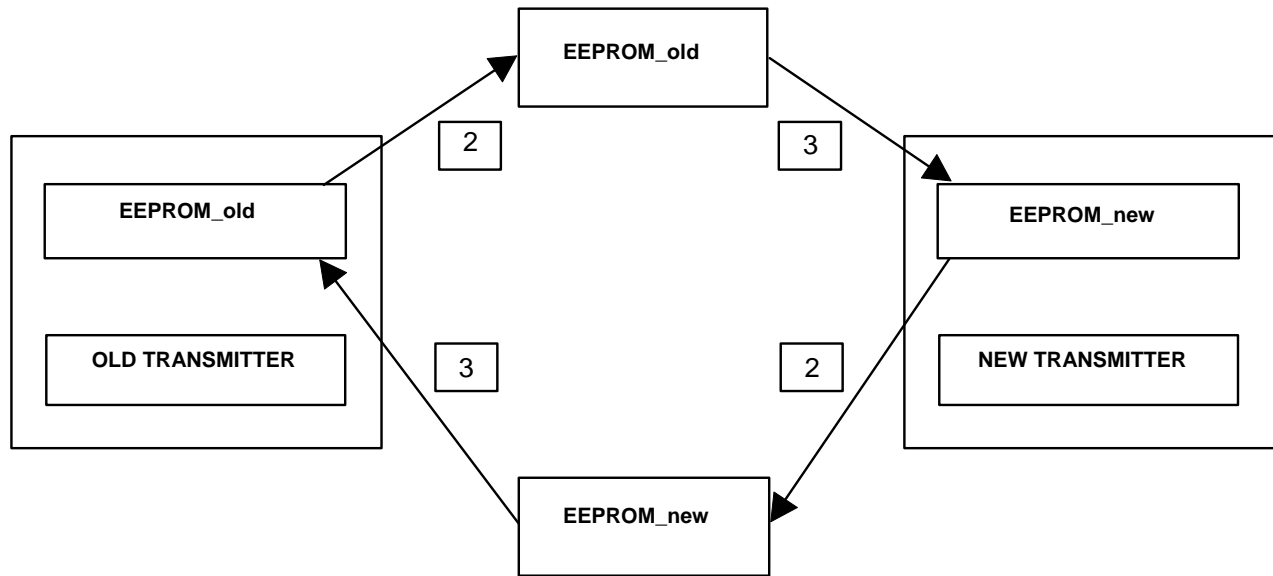
2. Take off the receiver's cover.
3. Lift up the EEPROM module



8.2 Replacement EEPROM from Transmitter to Transmitter


The replacement of the EEPROM from a existing OLD transmitter which is controlling a crane to another NEW transmitter, is done as follows:

1. Take the two transmitters and switch them off from the key-switch and the STOP pushbutton



2. Remove the screws and lift up the OLD's EEPROM module as seen before.
3. Plug it in to the NEW transmitter.



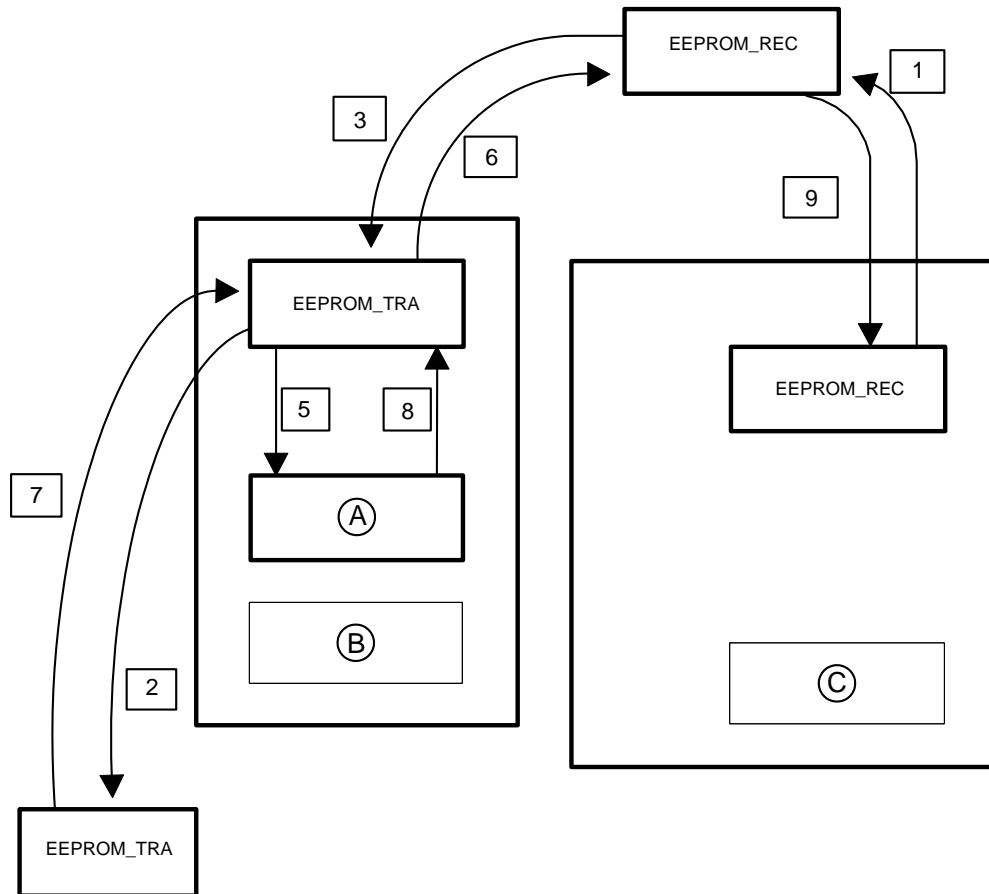
4. Close the EEPROM module cover with the two screws.
5. Switch ON the key and pull up the STOP pushbutton.
6. Press START  .

8.3 Copying EEPROM from Receiver to Transmitter

The copying of the receiver's EEPROM into the transmitter's EEPROM involve two general processes:

- A. The first step consist of copying the receiver's EEPROM data to the transmitter internal FLASH memory.
- B. The second step consists of copying data from the internal FLASH memory to a new EEPROM module.

To copy an EEPROM module from one receiver to one transmitter, follow the next steps:



- A. Internal FLASH Memory
- B. Transmitter
- C. Receiver

1. Unplug the EEPROM module from the Receiver as explained before (EEPROM_REC).
2. Unplug the EEPROM module from the Transmitter as explained before (EEPROM_TRA).
3. Plug the receiver's EEPROM_REC in the transmitter in which the data have to be copied.
4. Switch ON the key and pull up the STOP pushbutton.
5. Enter the transmitter in the EEPROM to FLASH Copying mode, by pushing Forward (second speed) and then Start pushbuttons (picture below). The transmitter's LED will start blinking in orange colour, until it finishes copying the EEPROM to the internal FLASH memory. If the copying has been successful, the LED will turn to green. If not the LED will remain in continuous orange. In that case stop the transmitter and repeat steps 4 and 5.



R&M Materials Handling, Inc.
4501 Gateway Boulevard
Springfield, Ohio 45502
P.: (937) 328-5100
FAX: (937) 325-5319



6. Maintaining the Transmitter ON, unplug the receiver's EEPROM_REC from the Transmitter.
7. Plug the transmitter's EEPROM_TRA module and close the cover with two bolts.
8. Enter the transmitter in the FLASH to EEPROM Copying mode by Pushing Forward button (second speed), until it starts blinking in orange colour (picture below). If the copying has been successful, the LED will turn to green colour and the transmitter will switch OFF automatically. Push STOP to exit the copying mode. In case of an error, the LED will blink in red colour and the transmitter will switch OFF automatically. If this happens, push STOP and proceed repeating procedure 4.



9. Plug the receiver's EEPROM_REC module in the receiver.