

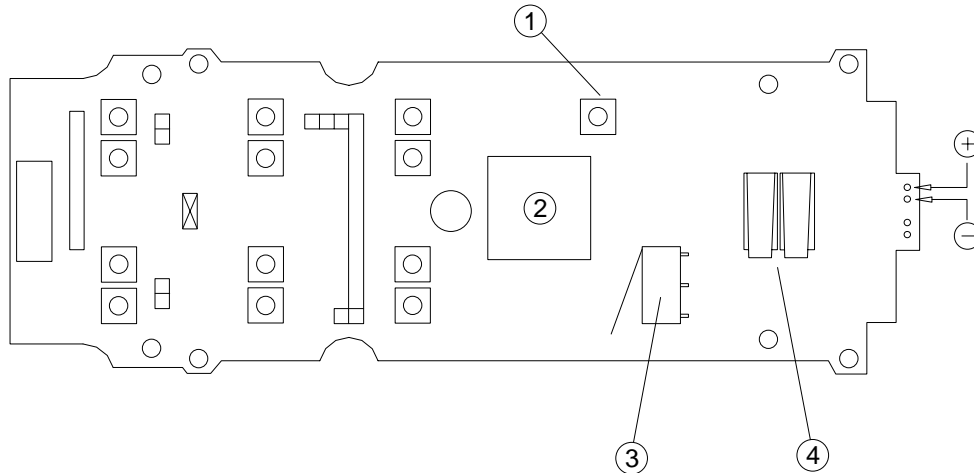


R&M Materials Handling, Inc.
4501 Gateway Boulevard
Springfield, Ohio 45502
P.: (937) 328-5100
FAX: (937) 325-5319

9 TROUBLESHOOTING

9.1 Drawings

9.1.1 Transmitter board

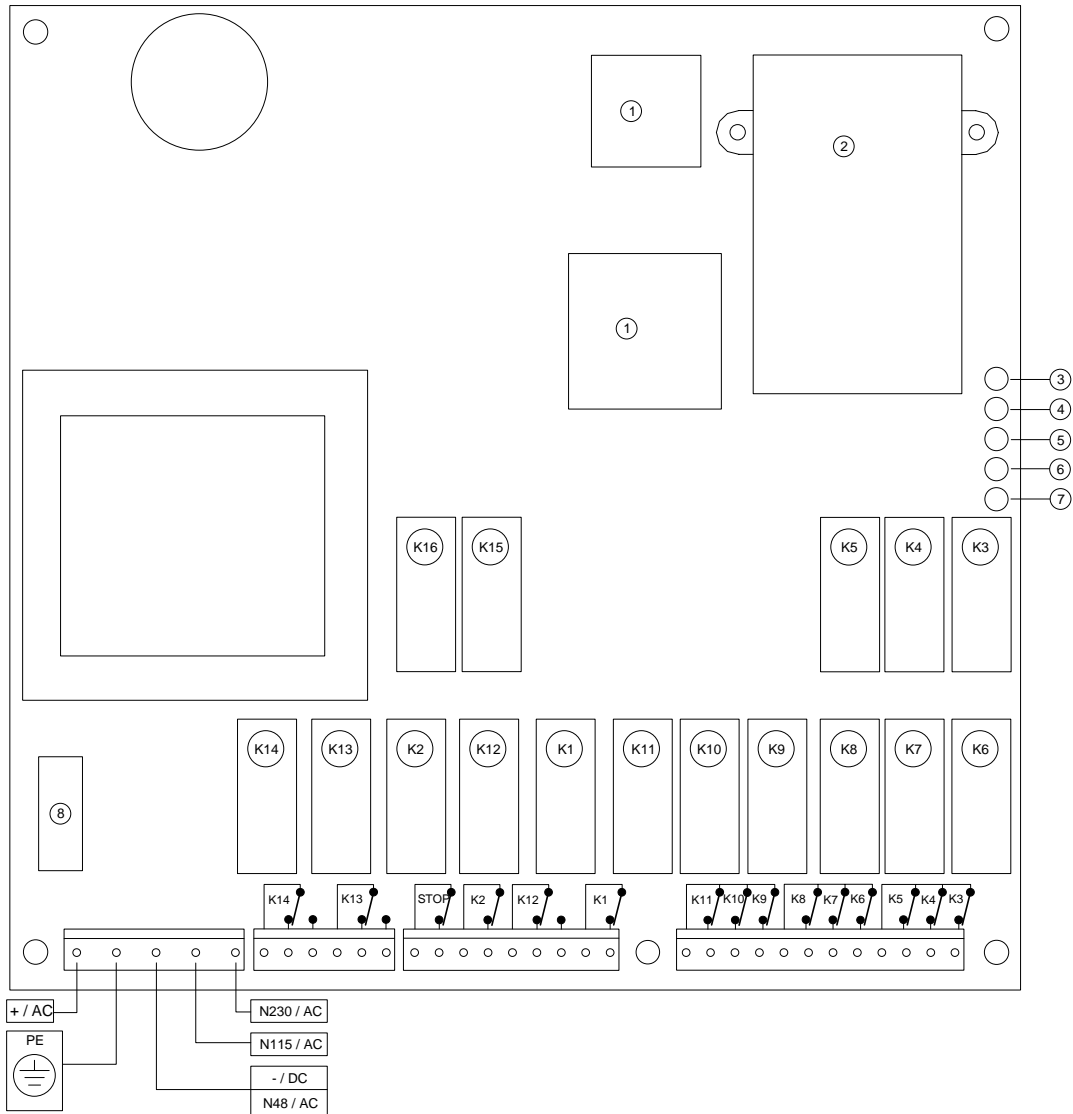


1. Start switch
2. Up
3. Key switch
4. Stop switches



R&M Materials Handling, Inc.
 4501 Gateway Boulevard
 Springfield, Ohio 45502
 P.: (937) 328-5100
 FAX: (937) 325-5319

9.1.2 Receiver board



1. Up
2. Radio
3. Signal
4. Power
5. Hard
6. ID
7. Data
8. Fuse



R&M Materials Handling, Inc.
 4501 Gateway Boulevard
 Springfield, Ohio 45502
 P.: (937) 328-5100
 FAX: (937) 325-5319

9.2 LED indications

Once the receiver has been powered up, it enters into the **SCANNING mode** while the own transmitter is off.

The following receiver green LEDs should now light up:

SIGNAL:	OFF if all radio channels in the band are free. Flashing ON if the receiver is finding channels with RF signals.
POWER:	ON, indicating that the power supply is correct.
HARDOK:	ON, indicating that the board is OK.
ID:	OFF
DATA:	OFF if none of the radio channels contains signals belonging to a RADF13, RADS11 or RADH11 radio remote control system in the area. Flashing ON if some exists.

On receiving a signal from the transmitter, the receiver will enter into the **WORKING mode**.

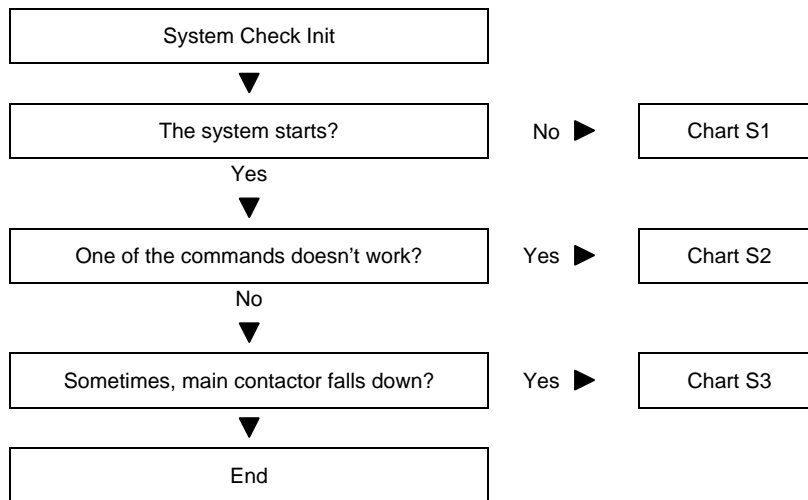
The following receiver LEDs should now light up:

SIGNAL:	Flashing ON, indicating that it is receiving an RF signal at the working frequency.
POWER:	ON, indicating that the power supply is correct.
HARDOK:	ON, indicating that the board is OK.
ID:	Flashing ON each time a good frame is received with ID correct. This means that the receiver has recognised the transmitter's identification code
DATA:	Flashing ON each time a good frame is received not necessary containing the right ID.

9.3 General System Check

9.3.1 Chart S0

System check



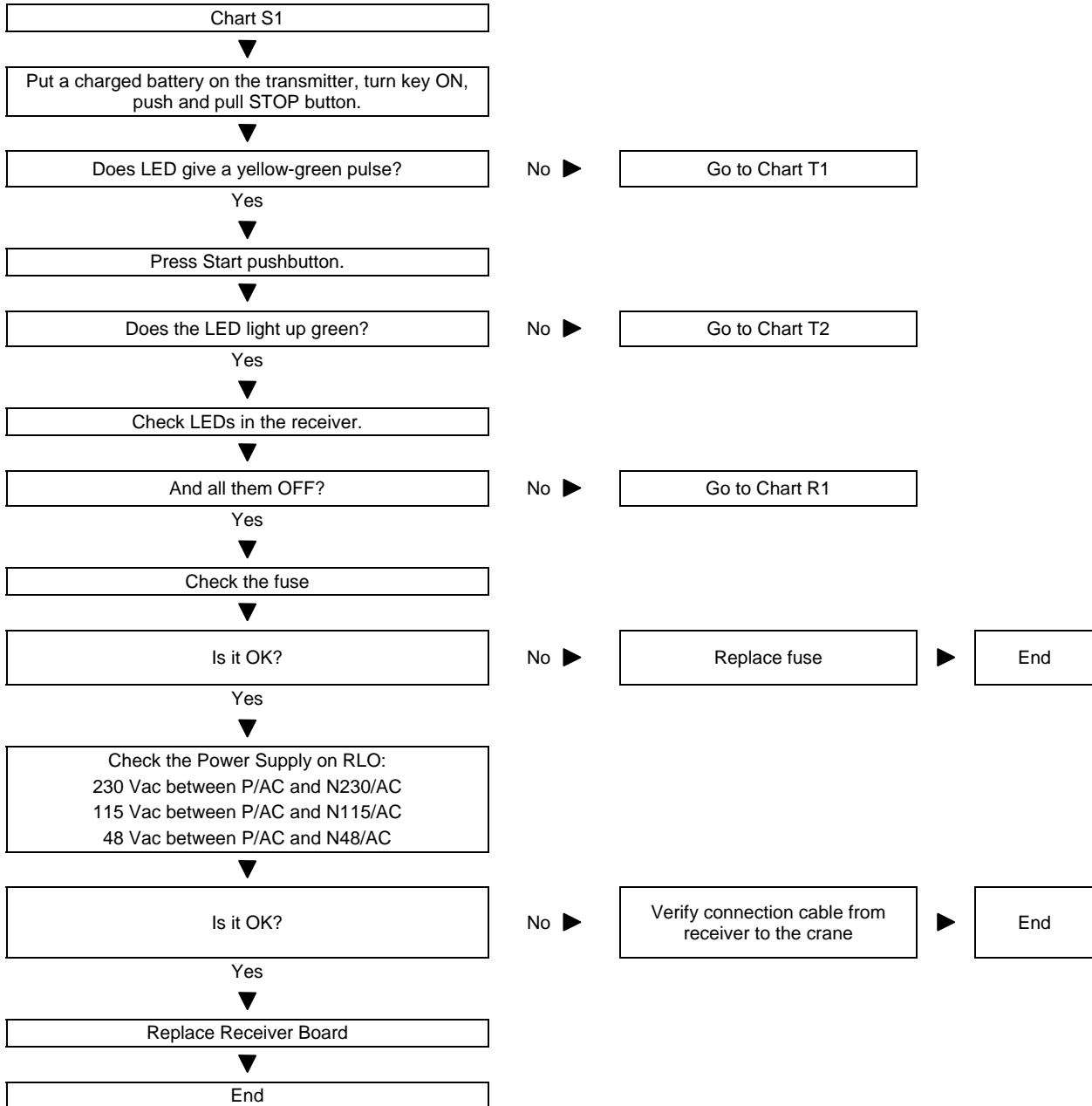


R&M Materials Handling, Inc.
4501 Gateway Boulevard
Springfield, Ohio 45502
P.: (937) 328-5100
FAX: (937) 325-5319

9.4 System totally downs

9.4.1 Chart S1

System doesn't start

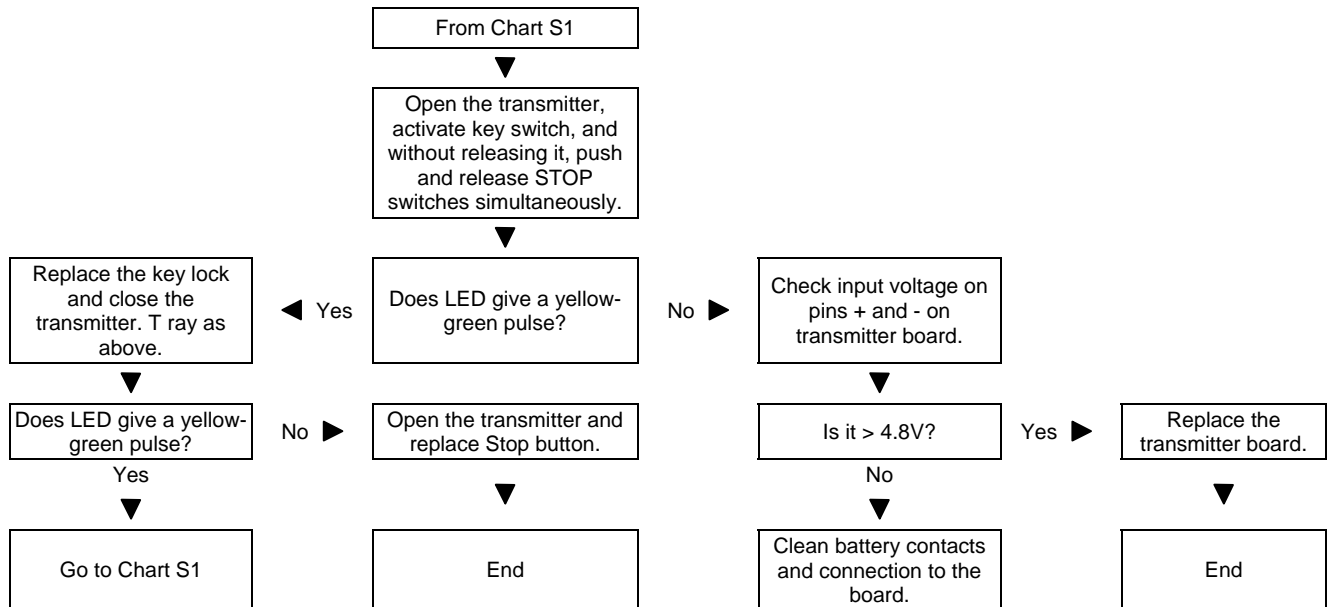




R&M Materials Handling, Inc.
4501 Gateway Boulevard
Springfield, Ohio 45502
P.: (937) 328-5100
FAX: (937) 325-5319

9.4.2 Chart T1

When trying to start the transmitter, LED doesn't give the Stop-checking signal.

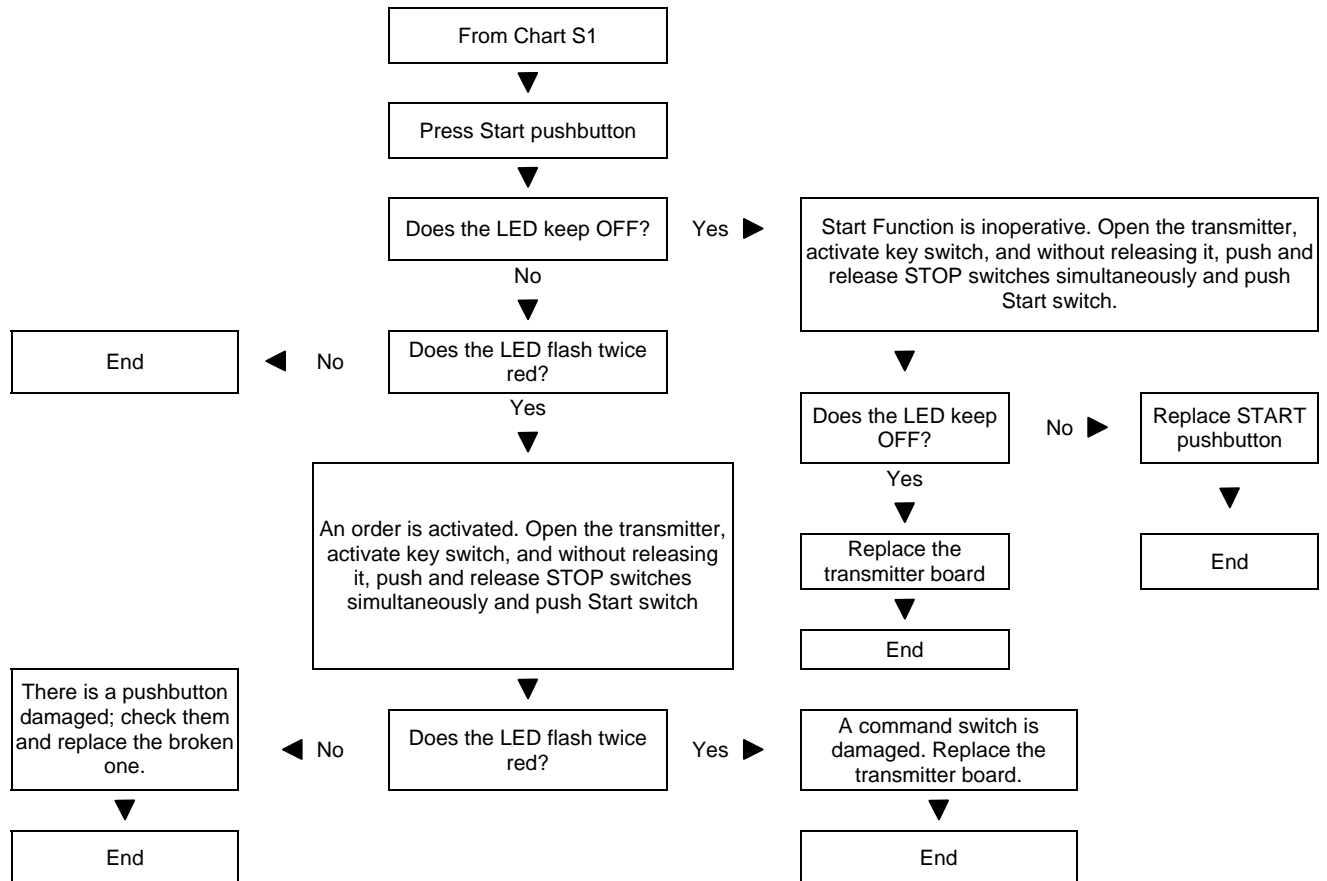




R&M Materials Handling, Inc.
4501 Gateway Boulevard
Springfield, Ohio 45502
P.: (937) 328-5100
FAX: (937) 325-5319

9.4.3 Chart T2

Transmitter doesn't start

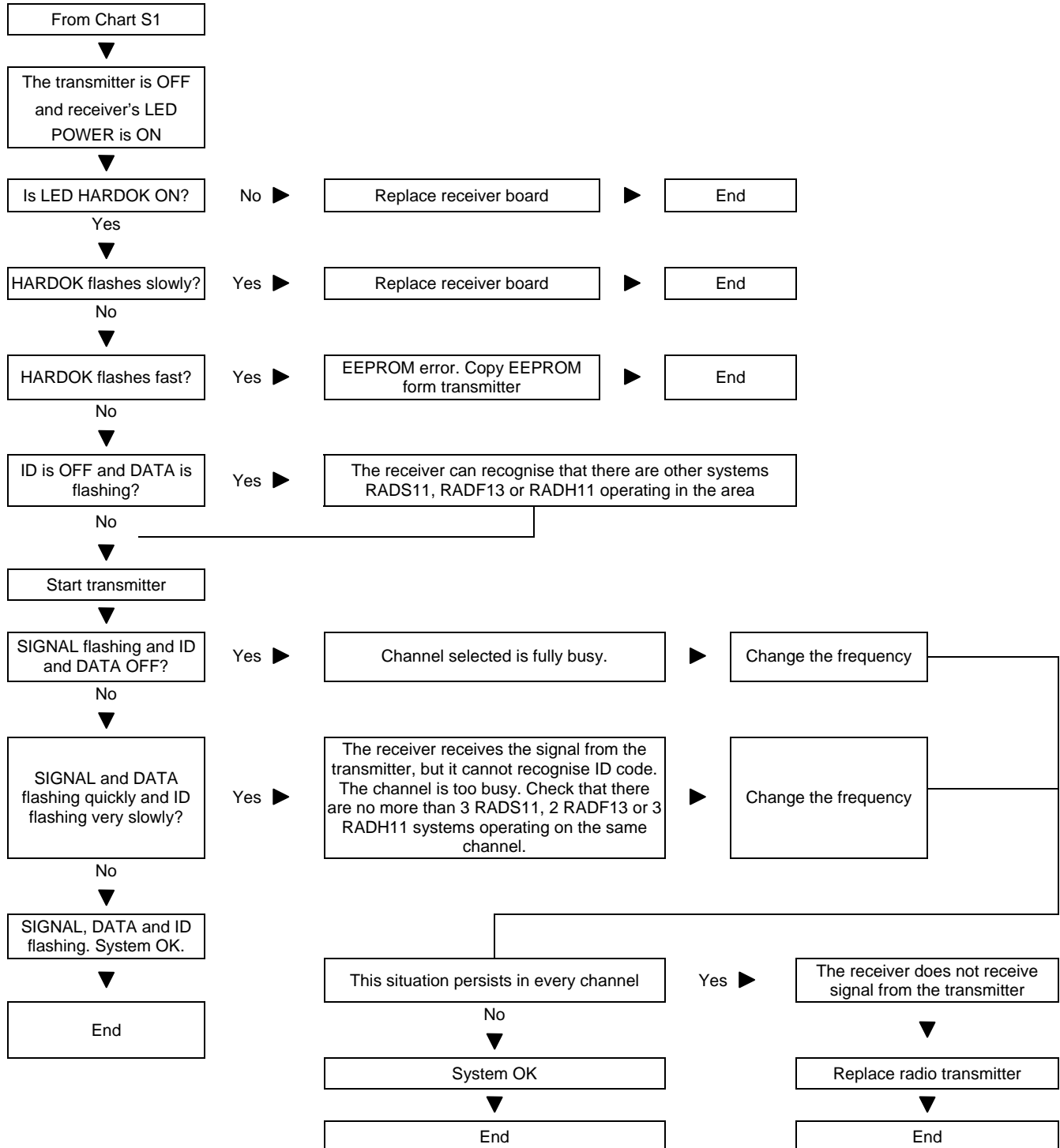




R&M Materials Handling, Inc.
 4501 Gateway Boulevard
 Springfield, Ohio 45502
 P.: (937) 328-5100
 FAX: (937) 325-5319

9.4.4 Chart T2

Receiver doesn't start, even having good power supply



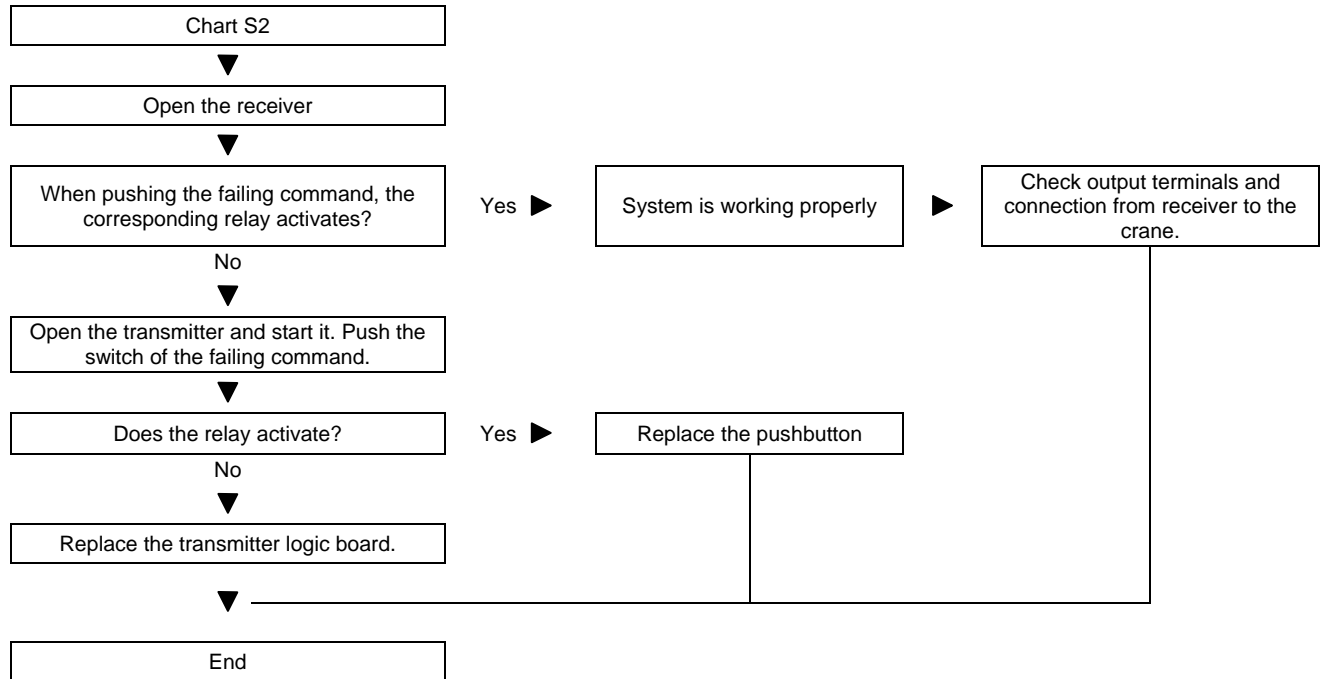


R&M Materials Handling, Inc.
4501 Gateway Boulevard
Springfield, Ohio 45502
P.: (937) 328-5100
FAX: (937) 325-5319

9.5 Failure of one of the functions

9.5.1 Chart S2

System works except one of the commands.





R&M Materials Handling, Inc.
4501 Gateway Boulevard
Springfield, Ohio 45502
P.: (937) 328-5100
FAX: (937) 325-5319

9.6 Intermittent failures

9.6.1 Chart S3

Sometimes the main contactor falls down.

