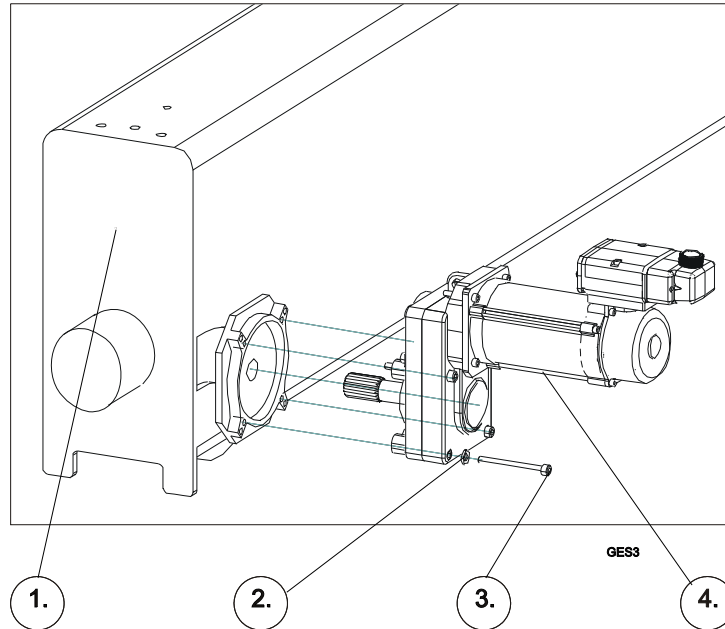


3 Traveling machinery assembly

3.1 Machinery sizes 3-5



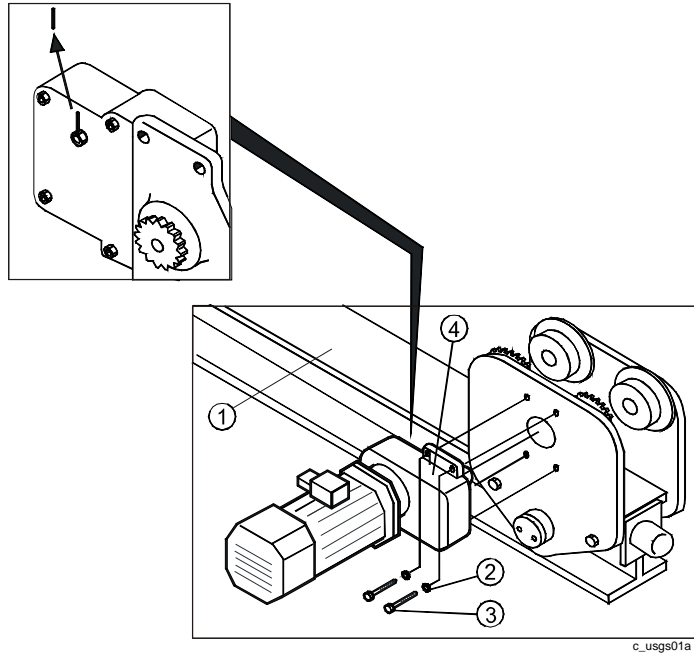
Pos.	Name	Specification	Amount
1	End carriage		2
2	Washer	DIN125-A8-A3G (Machinery sizes 3 and 4) DIN6796-A12-A3G (Machinery size 5)	8+8
3	Screw	DIN912-M8x85-8.8-A3G (Machinery size 3) DIN912-M8x100-8.8-A3G (Machinery size 4) DIN912-M12x140-8.8-A3G (Machinery size 5)	8+8
4	Traveling machinery		2

- Clean splines and mounting flanges from dirt and rust protection wax and grease the shaft lightly before assembly.
- You can use a plastic hammer to slide drive in. Do not use any metal or lead hammer.
- Tightening torques M8-8.8 23 Nm, M12-8.8 77 Nm.
- Remove the protection pin from the breather plug.



R&M Materials Handling, Inc.
 4501 Gateway Boulevard
 Springfield, Ohio 45502
 P.: (937) 328-5100
 FAX: (937) 325-5319

3.2 Machinery size 3, 8 wheels



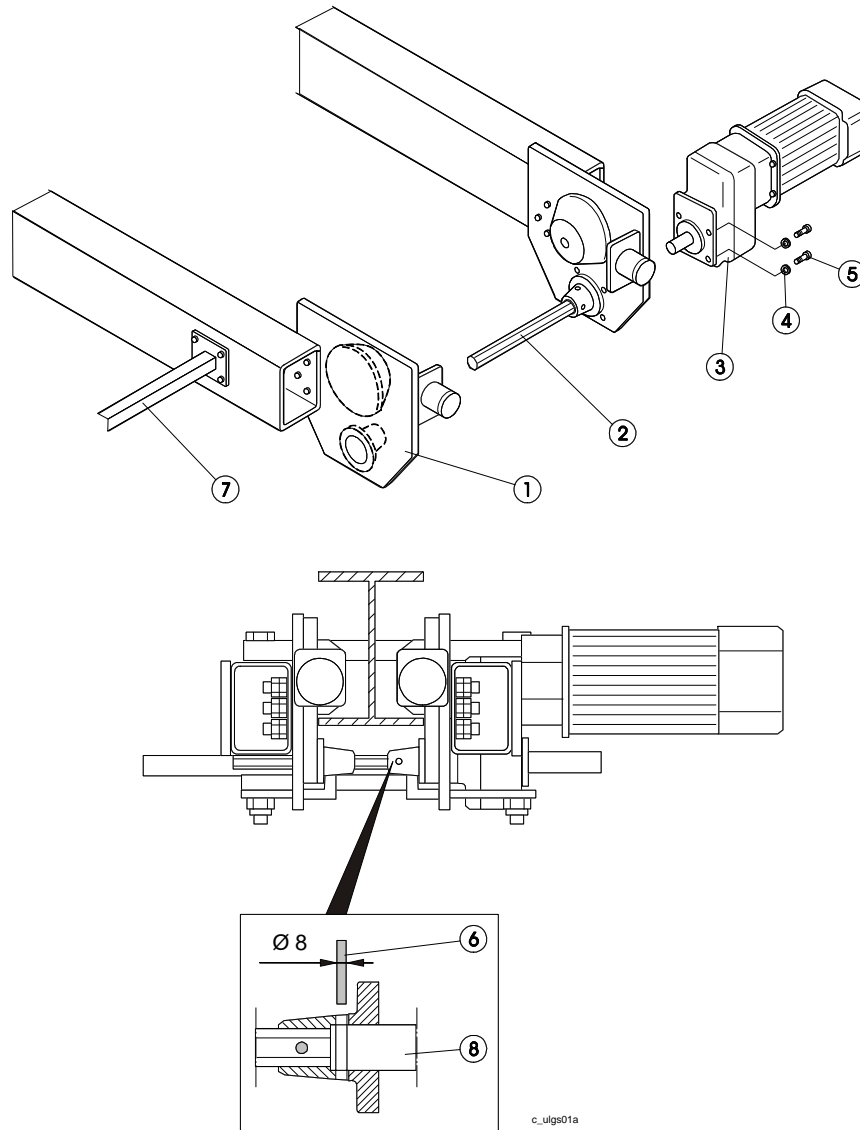
Pos.	Name	Specification	Amount
1	End truck		2
2	Washer	11DIN126-A3G	4+4
3	Socket head cap screw	M10X35DIN933-8.8A3G	4+4
4	Traveling machinery		2

- Clean splines and mounting flanges from dirt and rust protection wax and grease the shaft lightly before assembly.
- You can use a plastic hammer to slide drive in. Do not use any metal or lead hammer.
- Tightening torques M10-8.8 40 Nm
- Remove the protection pin from the breather plug.



R&M Materials Handling, Inc.
 4501 Gateway Boulevard
 Springfield, Ohio 45502
 P.: (937) 328-5100
 FAX: (937) 325-5319

3.3 Machinery size 3, 4 wheels



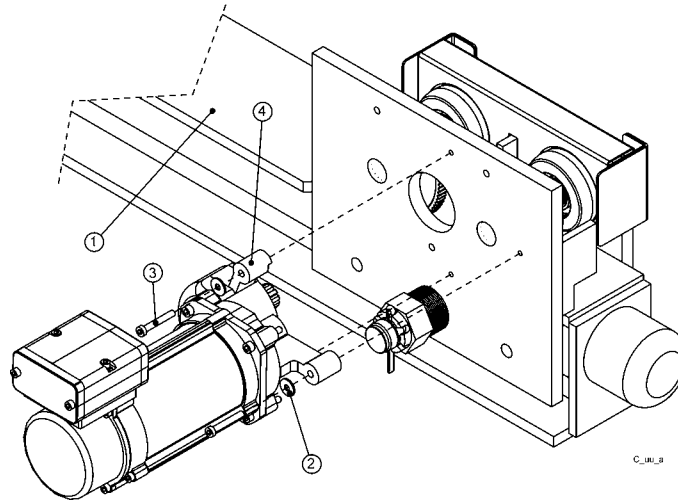
Pos.	Name	Specification	Amount
1	End truck		2
2	Axle	ILBD00-6 A	2
3	Traveling machinery		2
4	Washer	11DIN126-A3G	4+4
5	Socket head cap screw	M10X35DIN933-8.8A3G	4+4
6	Split pin	DIN1481-8X32	1+1
7	Crane power towing arm		1
8	Gear shaft		

- Drill 8 mm hole for pin through gear wheel and traveling machinery shaft, use predrilled hole! Install split pin!
- Do not fix axle to the idle wheel! Make sure that axle moves horizontally freely through gear wheel!
- Remove the protection pin from the breather plug!



R&M Materials Handling, Inc.
 4501 Gateway Boulevard
 Springfield, Ohio 45502
 P.: (937) 328-5100
 FAX: (937) 325-5319

3.4 Machinery size 2, 8 wheels



Pos.	Name	Specification	Amount
1	End truck		2
2	Washer	6DIN9021-A3G	3+3
3	Socket head cap screw	M6x40 DIN912-8.8-A36	3+3
4	Traveling machinery		2

- Clean splines and mounting flanges from dirt and rust protection wax and grease the shaft lightly before assembly.
- You can use a plastic hammer to slide drive in. Do not use any metal or lead hammer.
- Tightening torques M6-8.8: 9 Nm