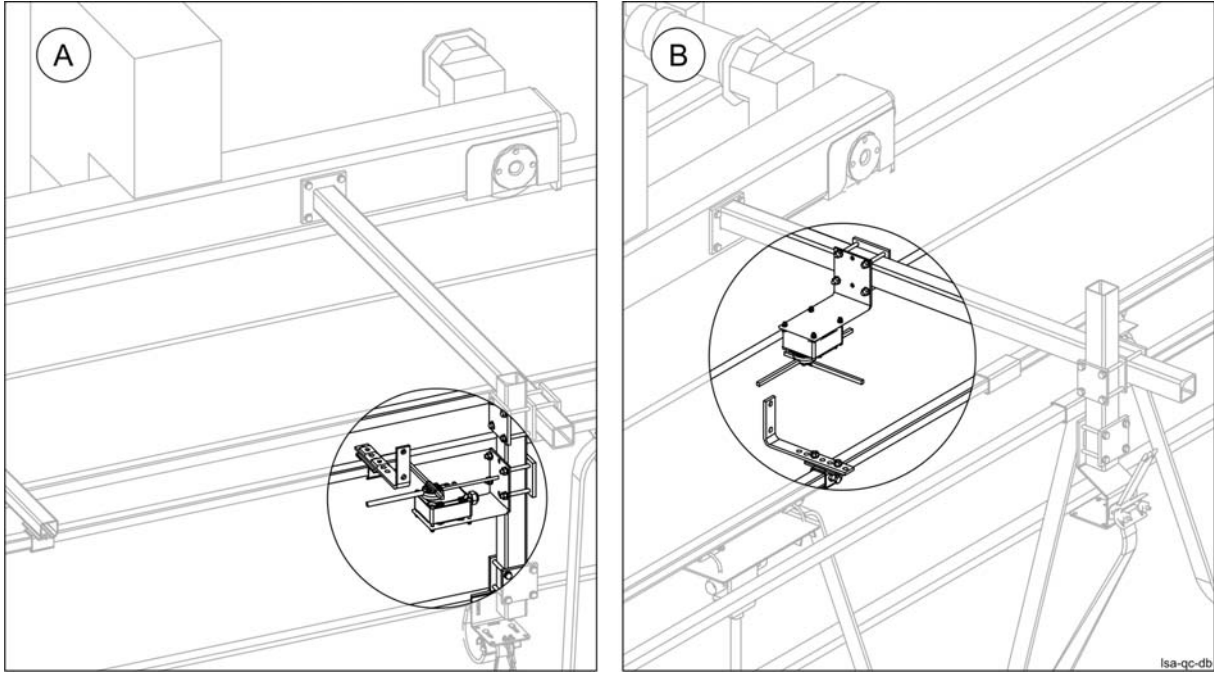




R&M Materials Handling, Inc.
 4501 Gateway Boulevard
 Springfield, Ohio 45502
 P.: (937) 328-5100
 FAX: (937) 325-5319

6 Traveling limit switch assembly

6.1 Double girder trolley (Wire rope hoist)



Limit switch part list			
Pos.	Name	Specification	Amount
	Limit switch	XC...	1
	Fixing plate	QA-L162W110H93	1
	Fixing plate	CQP-L80W80H6	1
	Fixing part set	CQA	1
Limit switch trigger part list			
Pos.	Name	Specification	Amount
	Trigger	QA-L210W30	2 or 4
	Adapter	KC-020275-0250	2 or 4
Trigger fixing part			
Pos.	Name	Specification	Amount
	Track support bracket	KC-023222 or KC-024155	2 or 4

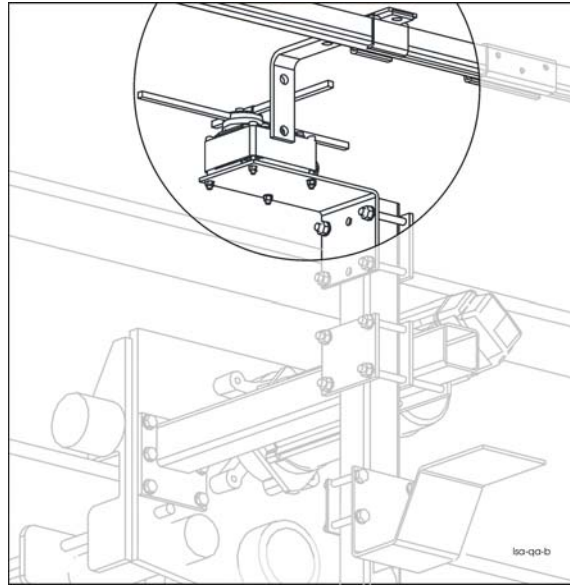
Hoist limit switch can be assembled to the horizontal or to the vertical square tube of hoist towing arm. Choose the best fitting place.

Notice the direction of limit switch; above or under the fixing plate.



R&M Materials Handling, Inc.
 4501 Gateway Boulevard
 Springfield, Ohio 45502
 P.: (937) 328-5100
 FAX: (937) 325-5319

6.2 Normal headroom trolley (Wire rope hoist)



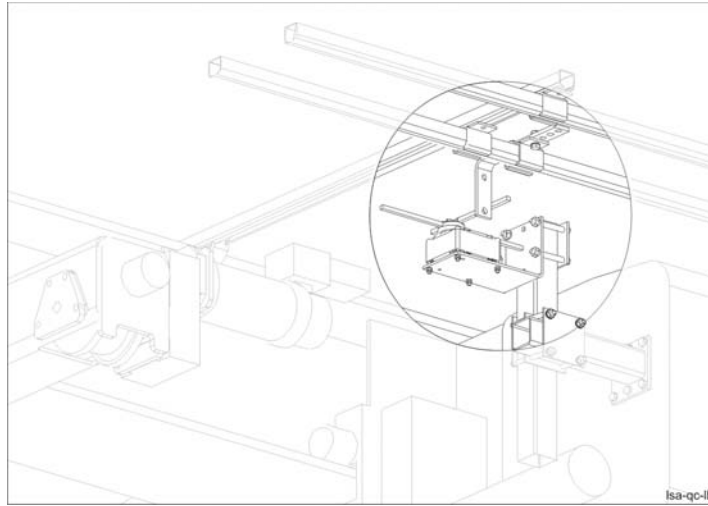
Limit switch part list			
Pos.	Name	Specification	Amount
	Limit switch	XC...	1
	Fixing plate	QA-L162W110H93	1
	Fixing plate	CQP-L80W80H6	1
	Fixing part set	CQA	1
Limit switch trigger part list			
Pos.	Name	Specification	Amount
	Plate	QA-L210W30	2 or 4
	C-rail	KC-020275-0250	2 or 4
Trigger fixing part			
Pos.	Name	Specification	Amount
	Track support bracket	KC-023222	2 or 4
Adapters Fixing part			
Pos.	Name	Specification	Amount
	Nut; Square	CQ-W25H25T8	4 or 8
	Screw	DIN933-M10x20-8.8-A3G	4 or 8
	Washer	DIN127-A10	4 or 8

Depending on girder height assemble the limit switch above or below the horizontal tube of the hoist towing arm. Trigger will be assembled to the inner c-rail of the crane.



R&M Materials Handling, Inc.
 4501 Gateway Boulevard
 Springfield, Ohio 45502
 P.: (937) 328-5100
 FAX: (937) 325-5319

6.3 Low headroom hoist (drum diam. 406 mm) (Wire rope hoist)



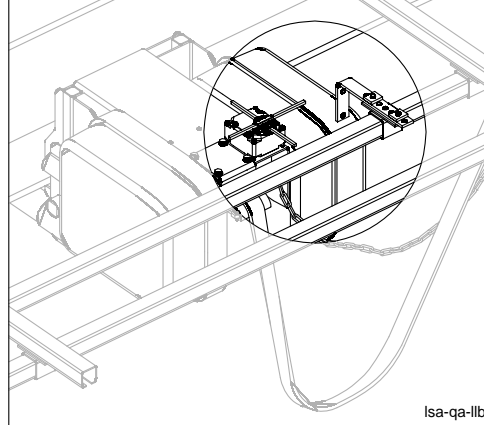
Limit switch part list			
Pos.	Name	Specification	Amount
	Limit switch	XC...	1
	Fixing plate	QA-L162W110H93	1
	Fixing plate	CQP-L80W80H6	1
	Fixing part set	CQA	1
Limit switch trigger part list			
Pos.	Name	Specification	Amount
	Plate	QA-L210W30	2 or 4
	C-rail	KC-020275-0250	2 or 4
Trigger fixing part			
Pos.	Name	Specification	Amount
	Track support bracket	KC-023222	2 or 4
Adapters Fixing part			
Pos.	Name	Specification	Amount
	Nut; Square	CQ-W25H25T8	4 or 8
	Screw	DIN933-M10x20-8.8-A3G	4 or 8
	Washer	DIN127-A10	4 or 8

Hoist limit switch trigger will be assembled to inner c-rail of the crane.



R&M Materials Handling, Inc.
 4501 Gateway Boulevard
 Springfield, Ohio 45502
 P.: (937) 328-5100
 FAX: (937) 325-5319

6.4 Low headroom hoist (drum diam. 303 mm or 355 mm), girder height \leq 500 mm (Wire rope hoist)



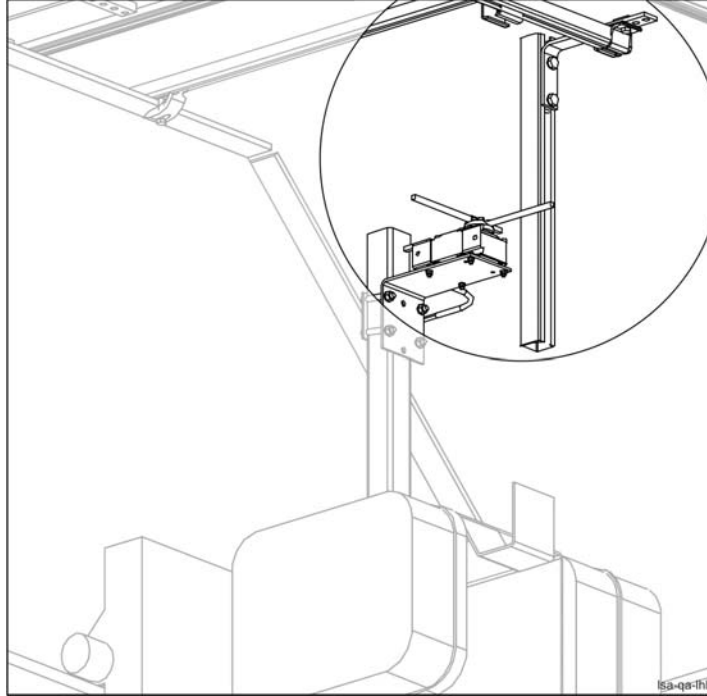
Limit switch part list			
Pos.	Name	Specification	Amount
	Limit switch	XC...	1
	Fixing part set	CQA	1
Limit switch trigger part list			
Pos.	Name	Specification	Amount
	Trigger	QA-L210W30	2 or 4
	Adapter	KC-023201-250	2 or 4
Trigger fixing part			
Pos.	Name	Specification	Amount
	Track support bracket	KC-023222	2 or 4
Adapters Fixing part			
Pos.	Name	Specification	Amount
	Nut; Square	CQ-W25H25T8	4 or 8
	Screw	DINM10X20-8,8	4 or 8
	Washer	DIN127-A10	4 or 8

Limit switch is ready assembled to the hoist. Trigger will be assembled to the inner c-rail of the crane.



R&M Materials Handling, Inc.
 4501 Gateway Boulevard
 Springfield, Ohio 45502
 P.: (937) 328-5100
 FAX: (937) 325-5319

6.5 Low headroom hoist (drum diam. 303 mm or 355 mm), girder height > 500 mm (Wire rope hoist)



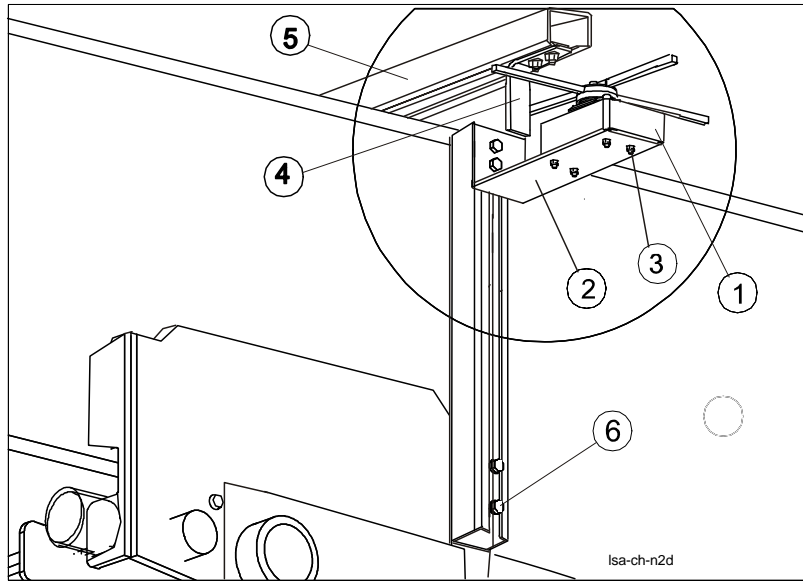
Limit switch part list			
Pos.	Name	Specification	Amount
	Limit switch	XC...	1
	Fixing plate	QA-L162W110H93	1
	Fixing plate	CQP-L80W80H6	1
	Fixing part set	CQA	1
Limit switch trigger part list			
Pos.	Name	Specification	Amount
	Plate	QA-L210W30	2 or 4
	C-rail	KC-020275-0250	2 or 4
Trigger fixing part			
Pos.	Name	Specification	Amount
	Track support bracket	KC-023222	2 or 4
Adapters Fixing part			
Pos.	Name	Specification	Amount
	Nut; Square	CQ-W25H25T8	4 or 8
	Screw	DIN933-M10x20-8.8-A3G	4 or 8
	Washer	DIN127-A10	4 or 8

Trigger will be assembled to the inner c-rail of the crane.



R&M Materials Handling, Inc.
 4501 Gateway Boulevard
 Springfield, Ohio 45502
 P.: (937) 328-5100
 FAX: (937) 325-5319

6.6 Normal headroom trolley (Chain hoist)

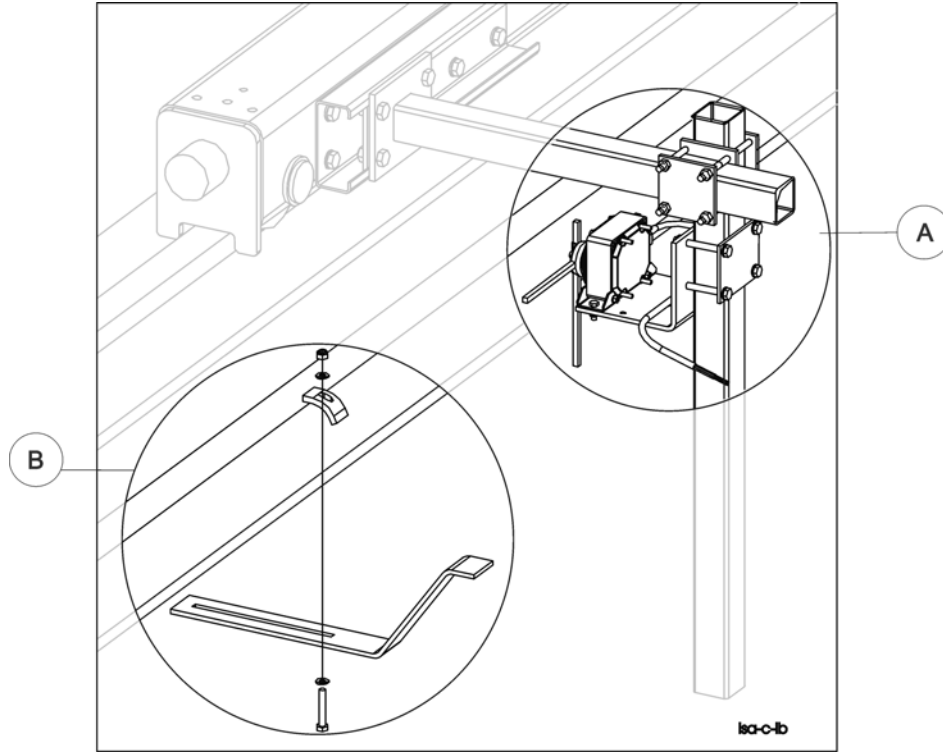


Limit switch part list			
Pos.	Name	Specification	Amount
1	Limit switch	XC...	1
2	Fixing plate	QA-L162W110H93	1
Limit switch trigger part list			
Pos.	Name	Specification	Amount
4	Trigger	QA-L210W30	2
	Screw	DIN933-M10X20-8.8-A3G	4
	Nut	CQ-L25W25T8	4
Trigger support			
Pos.	Name	Specification	Amount
5	C-rail	KC-020276-650	2
Support fixing part list			
Pos.	Name	Specification	Amount
6	Screw	DIN912-M8X50-8.8-A3G	2
	Washer	DIN440-D28/9X3-A3G	2



R&M Materials Handling, Inc.
 4501 Gateway Boulevard
 Springfield, Ohio 45502
 P.: (937) 328-5100
 FAX: (937) 325-5319

6.7 Crane limit switch assembly, top running end carriages



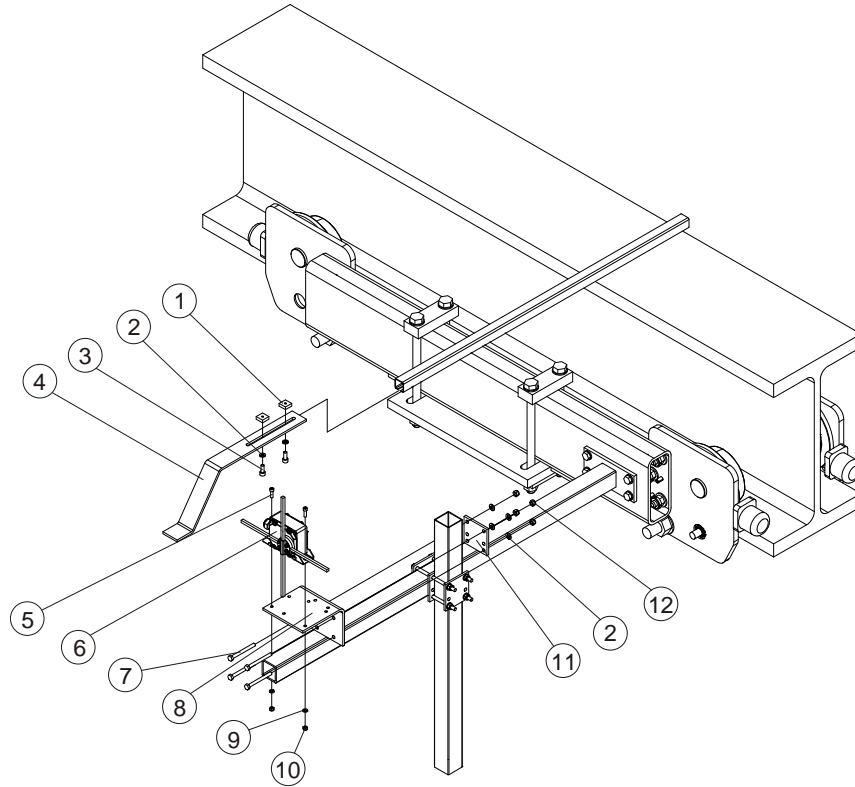
Limit switch part list			
Pos.	Name	Specification	Amount
A	Limit switch	XC...	1
	Fixing plate	CQK-W146H116T6	1
	Fixing plate	CQP-L80W80H6	4
Trigger fixing part			
Pos.	Name	Specification	Amount
B	Trigger	CQK-L463W80H145T5 or CQK-W463H140T5	2 or 4
	Beam clip	KC-020180-08	2 or 4
Fixing set			
Pos.	Name	Specification	Amount
A+B	Limit switch assembly set	L109	1

Assemble the crane limit switch to cranes towing arm. The trigger is to be assembled to the runway beam.



R&M Materials Handling, Inc.
 4501 Gateway Boulevard
 Springfield, Ohio 45502
 P.: (937) 328-5100
 FAX: (937) 325-5319

6.8 Crane limit switch assembly, underrunning end carriages (Wire rope hoist)



Pos.	Name	Specification	Fixing variation	Amount
1	Fixing part	CQ-W25T6L30		2
2	Washer	DIN125-A9-A3G		10
3	Screw	DIN933-M8X25-8.8-A3G		2
4	Trigger	CQK-W463H140T5		1
5	Screw	DIN933-M6X20-8.8-ZN25		2
6	Limit switch	XCR-F17		1
7	Screw	DIN931-M8X80-8.8-A3G		4
8	Support plate	CQK-W146H116T6		1
9	Washer	DIN125-A6-A3G		4
10	Nut	DIN985-M6-8-A3G		2
11	Fixing plate	CQP-L80W80H6		1
12	Nut	DIN985-M8-8-A3G		4

Assemble the crane limit switch to cranes towing arm. The trigger is to be assembled to the runway beam.