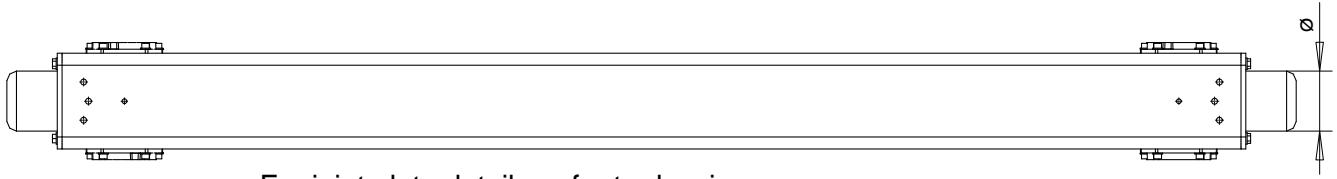
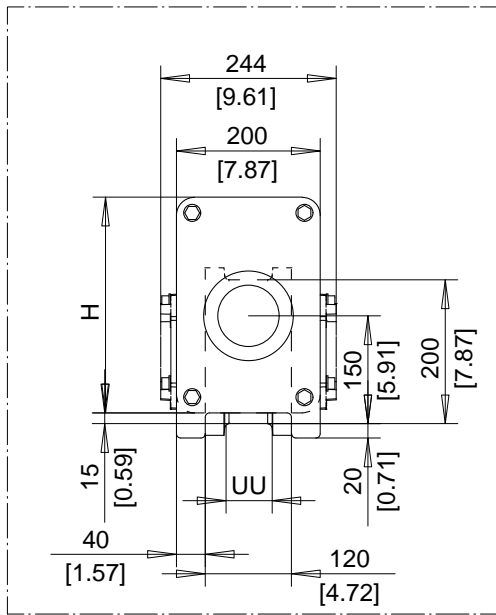
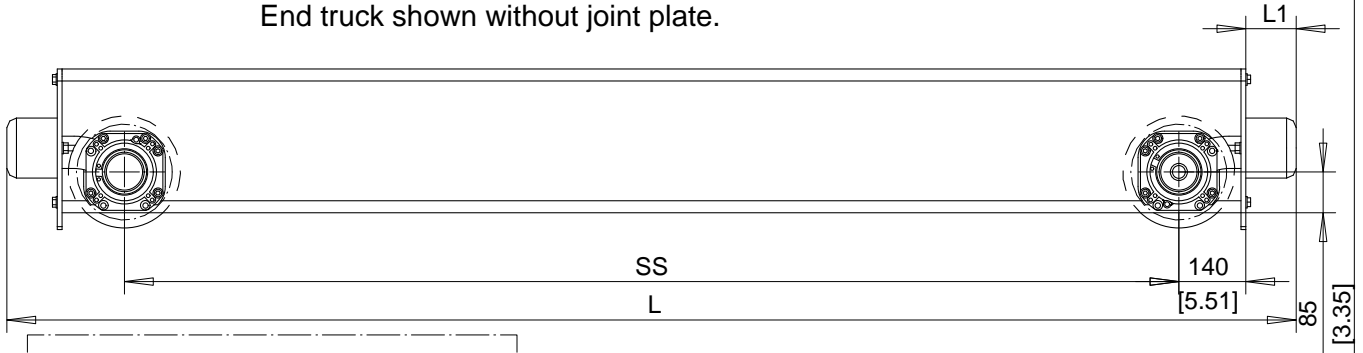


RT20 END TRUCK



For joint plate details, refer to drawing:
 TOP JOINT PLATE TYPE L
 SIDE JOINT PLATE TYPE R
 End truck shown without joint plate.



BUMPER DIMENSIONS		
TYPE	L1	∅
	mm	mm
A	53	63
B	68	80
C	85	100
D	105	125
E	150	100
F	190	125

TREAD WIDTH RANGE
UU = 55mm [2.17"]...100mm [3.94"]

COMPATIBLE WITH GES3 OR GES4 DRIVE.

** The maximum wheel loads listed are only a guideline. The maximum values are based on assumption that the crane speed is 40 m/min [130 fpm], end truck duty is Fem 2m and the runway rail width is 70 mm [2.75"]. If these conditions change, use QuoteMaster to help select the end truck.

Dimensions are for reference in estimating only. Use of various modifications may affect overall dimensional outline. Where dimensions are critical, request certified drawings for construction. All dimensions are in millimeters unless otherwise noted.

RT ENDTRUCK

SS mm (in)	H mm (in)	Max. dynamic whl load kN(KIP)**		Wt. kg (lb)	Chd	Appd	p_QX.RT20 File
		Single girder	Double girder R=1200				
1800 (70.87)	300 (11.8)	120 (27.0)	-----	231(509)	2002-08-07 Date	QX.RT20	
2200 (86.61)	300 (11.8)	120 (27.0)	120 (27.0)	260(573)	R&M	R&M Materials Handling Inc.	
2700 (106.3)	300 (11.8)	106 (23.8)	120 (27.0)	297(655)	MATERIALS	4501 Gateway Blvd, Springfield	
3100(122.05)	300 (11.8)	93.0(20.9)	120 (27.0)	326(719)	HANDLING	RT20 END TRUCK	
3800 (149.6)	300 (11.8)	76.0(17.1)	110 (24.7)	377(831)	INC.	Issue	3/2006

QX.RT20