

SIDE JOINT PLATE TYPE R

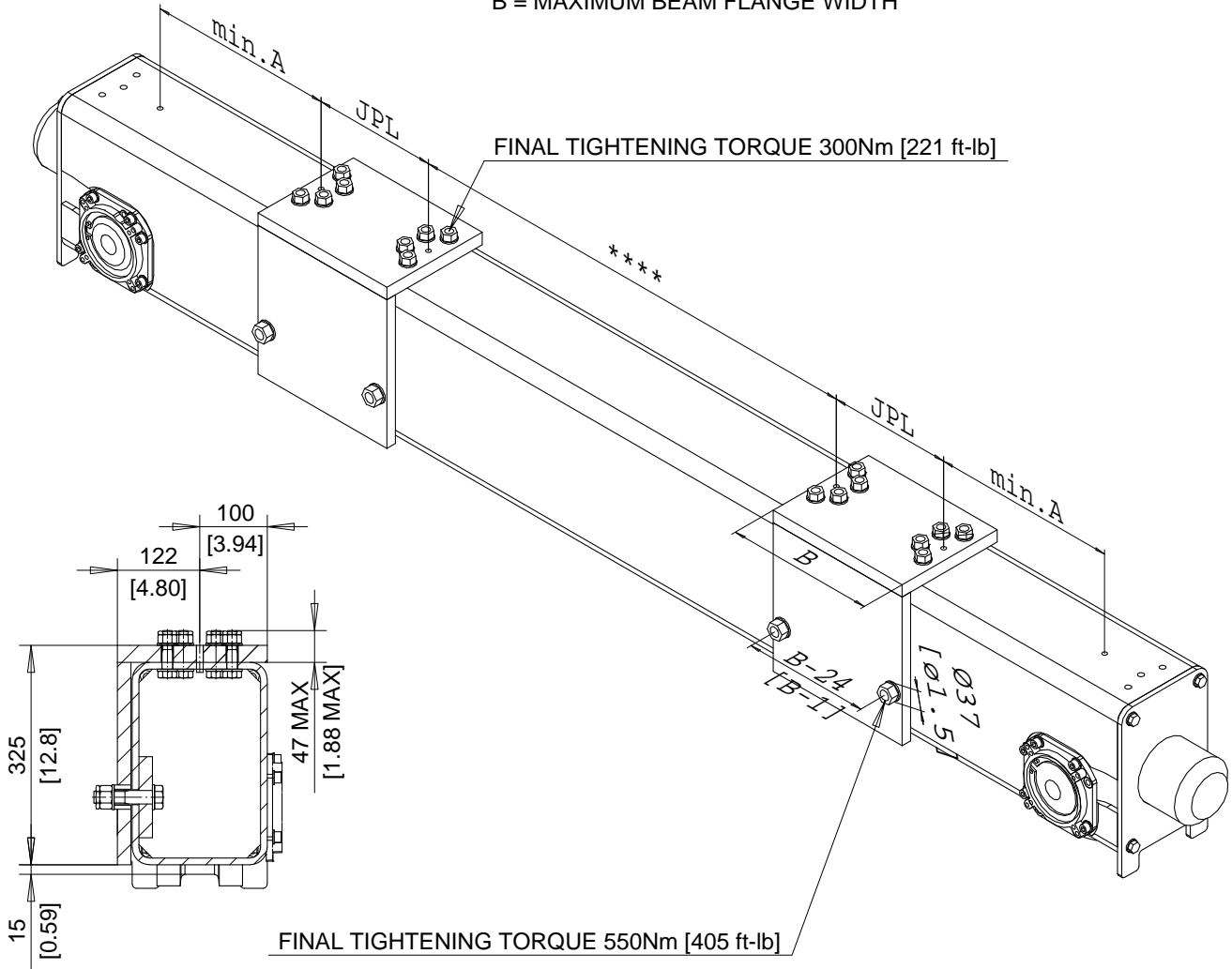
FOR RT20 & RT20B END TRUCKS

DG TRUCK SHOWN

minA DIMENSION mm [in]	
TRUCK	min. A
RT20	185 [7.3]

JOINT PLATE DIMENSIONS & WEIGHT			
	JOINT PLATE CODE		
VARIABLE	R3	R4	R5
JPL mm [in]	250 [9.84]	360 [14.17]	470 [18.50]
B mm [in]	300 [11.81]	410 [16.14]	520 [20.47]
Weight kg [lb]	34 [75.0]	45 [99.0]	54 [119]

B = MAXIMUM BEAM FLANGE WIDTH



Dimensions are for reference in estimating only. Use of various modifications may affect overall dimensional outline. Where dimensions are critical, request certified drawings for construction. All dimensions are in millimeters unless otherwise noted.

MAXIMUM **** DIMENSION mm [in]						
SS	RT20			Chd	Appd	p_QX.JPT_R File
	R3	R4	R5			
1800 [70.87]	930 [36.62]	710 [27.95]	490 [19.29]	2002-08-08	QX.JPT_R	
2200 [86.61]	1330 [52.37]	1110 [43.70]	890 [35.04]	Date		
2700 [106.3]	1830 [72.05]	1610 [63.39]	1390 [54.72]	R&M	R&M Materials Handling Inc.	
3100 [122.05]	2230 [87.80]	2010 [79.13]	1790 [70.47]	MATERIALS	4501 Gateway Blvd, Springfield	
3800 [149.6]	2930 [115.4]	2710 [106.7]	2490 [98.03]	HANDLING		
				INC.	JOINT PLATE TYPE R	Issue 3/2006

QX.JPT_R