

SIDE JOINT PLATE TYPE S

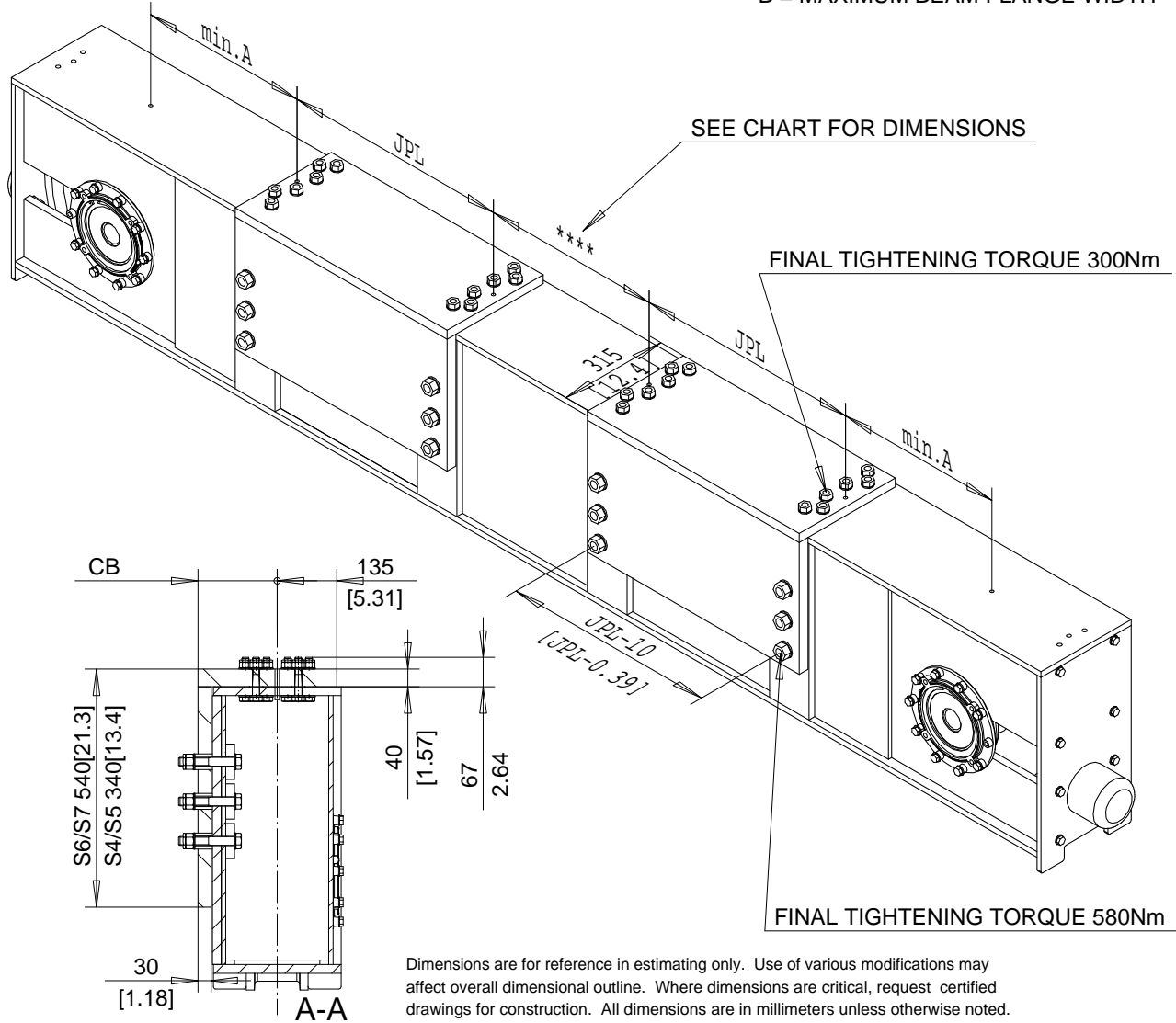
FOR RT25, RT25B, RT32, RT32B, RT50, & RT50B END TRUCKS

DG TRUCK SHOWN

min A DIMENSION	
TRUCK	min. A mm [in]
RT25	215 [8.46]
RT32	255 [10.04]
RT50	345 [13.58]

JOINT PLATE DIMENSIONS & WEIGHT				
VARIABLE	JOINT PLATE CODE			
	S4	S5	S6	S7
CB mm [in]	170 [6.693]	170 [6.693]	180 [7.087]	180 [7.087]
JPL mm [in]	410 [16.14]	520 [20.47]	520 [20.47]	730 [28.74]
B mm [in]	410 [16.14]	520 [20.47]	520 [20.47]	740 [29.13]
Weight kg [lb]	80 [176]	100 [220]	130 [287]	175 [386]

B = MAXIMUM BEAM FLANGE WIDTH



Dimensions are for reference in estimating only. Use of various modifications may affect overall dimensional outline. Where dimensions are critical, request certified drawings for construction. All dimensions are in millimeters unless otherwise noted.

MAXIMUM **** DIMENSION mm [in]											
SS	RT25		RT32			RT50					
	S4	S5	S4	S5	S6	S7	S6	S7			
2200 [86.61]	950 [37.4]	730 [28.7]	870 [34.3]	650 [25.6]			470 [18.5]	50 [1.97]	Chd	Appd	p_QX.JPT_S File
2700 [106.3]	1450 [57.1]	1230 [48.4]	1370 [53.9]	1150 [45.3]			970 [38.2]	550 [21.7]	2003-05-27 Date	QX.JPT_S	
3100 [122.1]	1850 [72.8]	1630 [64.2]	1770 [69.7]	1550 [61]			1370 [53.9]	950 [37.4]	R&M	R&M Materials Handling Inc.	
3800 [149.6]	2250 [88.6]	2330 [91.7]	2470 [97.2]	2250 [88.6]			2070 [81.5]	1650 [65]	MATERIALS	4501 Gateway Blvd, Springfield	
4500 [177.2]	3250 [115.4]	3030 [119.3]			2950 [116.1]	2530 [99.6]	2770 [109.1]	2350 [92.5]	HANDLING	JOINT PLATE TYPE S	
5000 [196.9]	3750 [147.6]	3530 [140]			3450 [135.8]	3030 [119.3]	3270 [128.7]	2850 [112.2]	INC.	Issue	3/2006
5500 216.5	4250 [167.3]	4030 [158.7]			3950 [155.5]	3530 [139]	3770 [148.4]	3350 [131.9]			