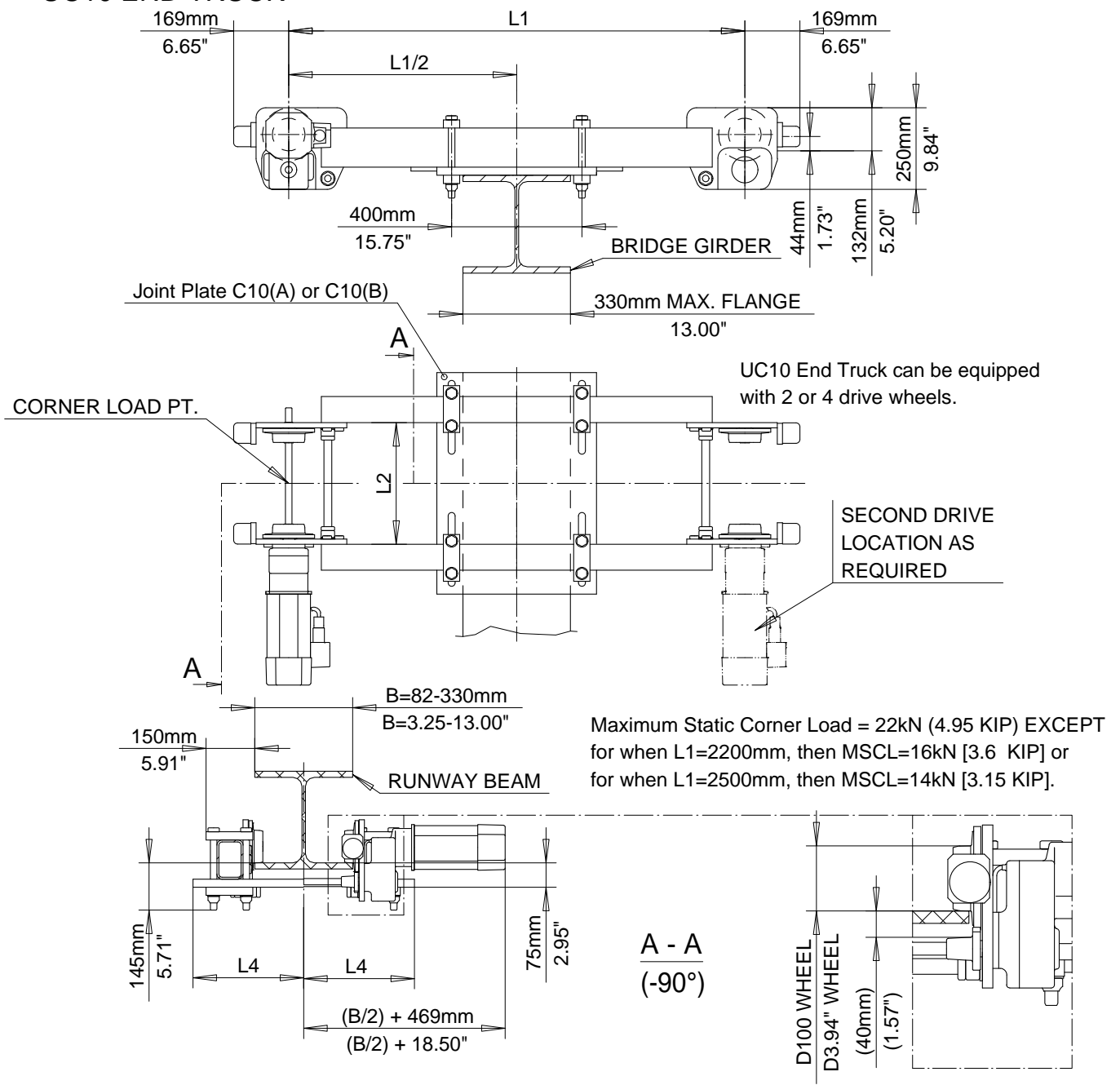


UC10 END TRUCK

SM2000 . CL10



Dimensions are for reference in estimating only. Use of various modifications may affect overall dimensional outline. Where dimensions are critical, request certified drawings for construction. All dimensions are in millimeters unless otherwise noted.

COMPONENTS - ENDTRUCK

L1 mm (in)	L2 mm (in)	L4 mm (in)	B (flg width) mm (in)	Wt. kg(lb)			
1400 (55.12)	B+73 (2.88)	275 (10.83)	82-199 (3.25-7.81)	120(265)	Chd	Appd	p_SM2000.CL10 File
		340 (13.39)	200-330 (7.88-13)	137(302)			
1700 (66.93)	B+73 (2.88)	275 (10.83)	82-199 (3.25-7.81)	135(298)	2000-06-12 Date	SM2000.CL10	
		340 (13.39)	200-330 (7.88-13)	152(335)			
2200 (86.62)	B+73 (2.88)	275 (10.83)	82-199 (3.25-7.81)	150(331)	R&M MATERIALS HANDLING INC.	R&M Materials Handling Inc. 4501 Gateway Blvd, Springfield	
		340 (13.39)	200-330 (7.88-13)	167(368)			
2500 (98.43)	B+73 (2.88)	275 (10.83)	82-199 (3.25-7.81)	160(353)	INC.	UC10 END TRUCK	
		340 (13.39)	200-330 (7.88-13)	177(390)			
						Issue	
						3/2006	