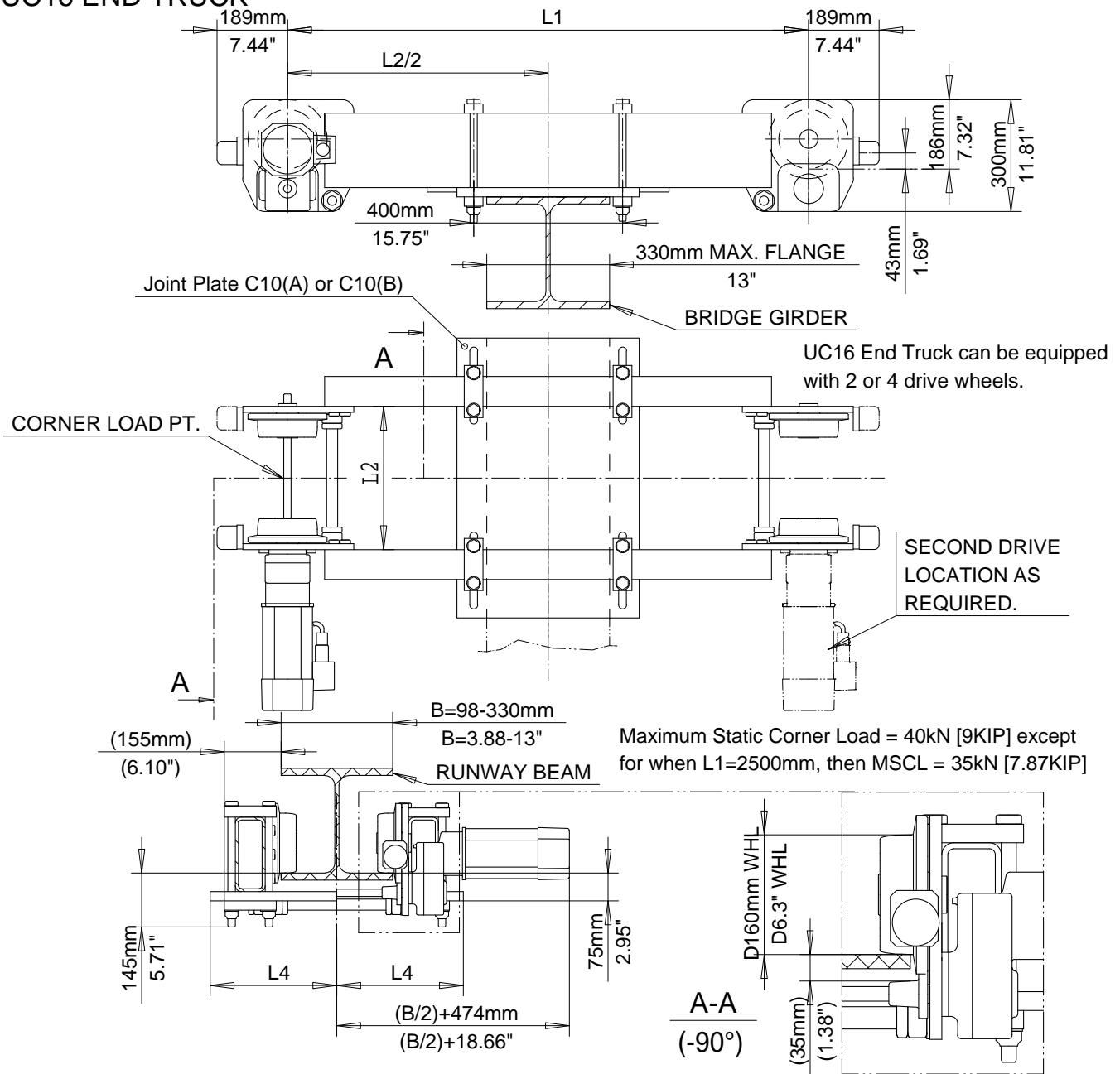


SM2000 . CL16

UC16 END TRUCK



Dimensions are for reference in estimating only. Use of various modifications may affect overall dimensional outline. Where dimensions are critical, request certified drawings for construction. All dimensions are in millimeters unless otherwise noted.

COMPONENTS - ENDTRUCK

L1 mm (in)	L2 mm (in)	L4 mm (in)	B (flg width) mm (in)	Wt. kg (lb)			
1400 (55.12)	B+85 (3.35)	275 (10.83)	98-199 (3.88-7.81)	250(551)	Chd	Appd	p_SM2000.CL16 File
		340 (13.39)	200-330 (7.88-13)	266(587)	2000-06-12 Date	SM2000.CL16	
1700 (66.93)	B+85 (3.35)	275 (10.83)	98-199 (3.88-7.81)	270(595)	R&M	R&M Materials Handling Inc.	
		340 (13.39)	200-330 (7.88-13)	286(631)	MATERIALS HANDLING INC.	4501 Gateway Blvd, Springfield	
2200 (86.62)	B+85 (3.35)	275 (10.83)	98-199 (3.88-7.81)	316(697)	UC16 END TRUCK		
		340 (13.39)	200-330 (7.88-13)	332(732)			
2500 (98.43)	B+85 (3.35)	275 (10.83)	98-199 (3.88-7.81)	320(705)	Issue		
		340 (13.39)	200-330 (7.88-13)	337(743)	3/2006		