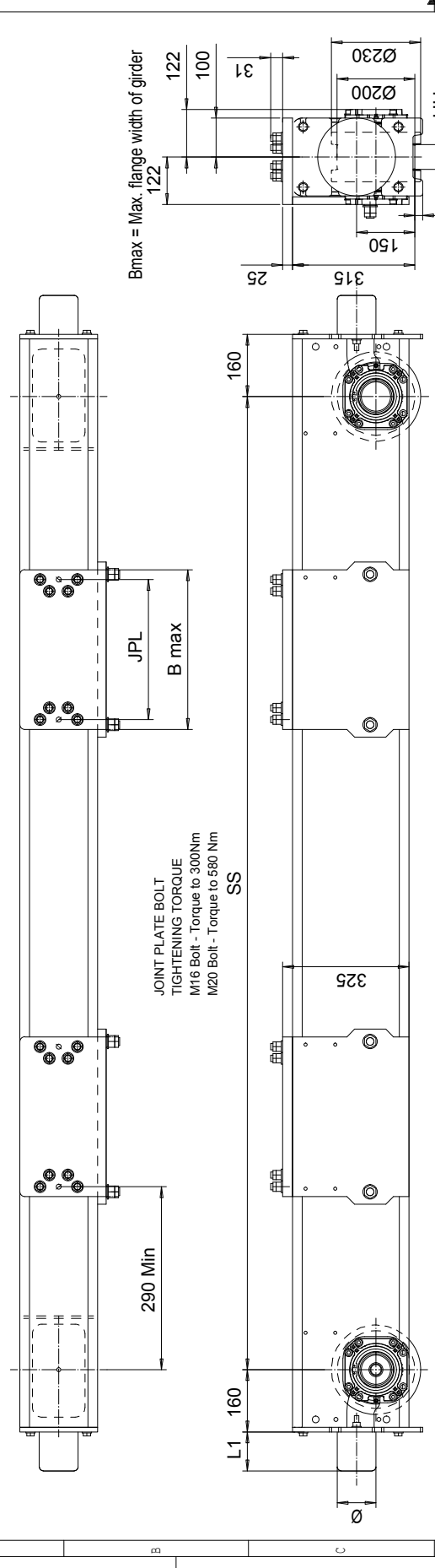


RTN20 END TRUCK SIDE JOINT PLATE TYPE R



Buffer type L1 (mm) Ø (mm)

B	68	80
C	85	100
D	105	125
K	80	80
G	100	100
E	150	100
F	190	125
H	160	160
I	200	200
M	125	125
P	240	160
S	300	200

Joint plate Min. Wheelbase, mm JPL B max (mm)

R3	2500; DG	250	300
R4	2500; DG	360	410
R5	2500; DG	470	520
R6	2500; DG	580	630

UU = 54 mm - 94 mm

The wheel loads listed are only a guideline. The max. wheel load listed is based on the structural integrity of the frame and load placement, and it does not take into account permissible wheel loading or bearing life. SG load placement is at the center, and DG load placement is for a trolley gage of 1400 mm [55'18"].

The permissible dynamic wheel load listed is based on assumptions that the bridge speed is 40 m/min [130 fpm], end truck duty is Fem 2m, and the runway rail as listed.

The actual wheel load should not exceed the permissible wheel load. If the permissible dynamic wheel load is greater than the maximum dyn wheel load, then the actual wheel load cannot exceed maximum dyn wheel load.

Dyn wheel load = 1.15 x static wheel load

Product Code example
RTN20-2574-R40840C0000-N

- RTN20 - Wheelbase
- 2574 - Max dyn whl load, (kN)
- R4 - Permissible dynamic wheel load
- 0840 - Joint plate distance (pin to pin, with double DG girder)
- C - Buffer type
- 0000 - Joint plate code
- N - Standard, E=Special primer paint, color code (not in use with RTN20)

Wheelbase code	SS (mm)	Max dyn whl load, (kN)		Perm dyn whl load, (kN)		Approx Wgt / trk (kg)	
		SG	DG	ASCE 60#	ASCE 85#	SG	DG
16	1600	132	132	88	98	252	295
20	2000	132	132	88	98	281	324
25	2500	132	132	88	98	318	361
32	3150	112	132	88	98	365	408
40	4000	75	85	88	98	427	470
45	4500	53	59	88	98	463	506

Rev	Description	Specification	Id	Drawing
RTN20R	RTN20R	RTN20R		
2009-02-23	2009-02-23			
Phase	Phase			
Author	Author			
Checker	Checker			
Designer	Designer			
Project	Project			
Order	Order			
ECN20	ECN20			
Issue	Issue			
Date	Date			
09/20/11	09/20/11			

END TRUCK OUTLINE DRAWING

RTN20-R

RTN20 END TRUCK SIDE JOINT

R&M MATERIALS HANDLING INC.

3000 W. 10th St. Ste. 100
 Minneapolis, MN 55425