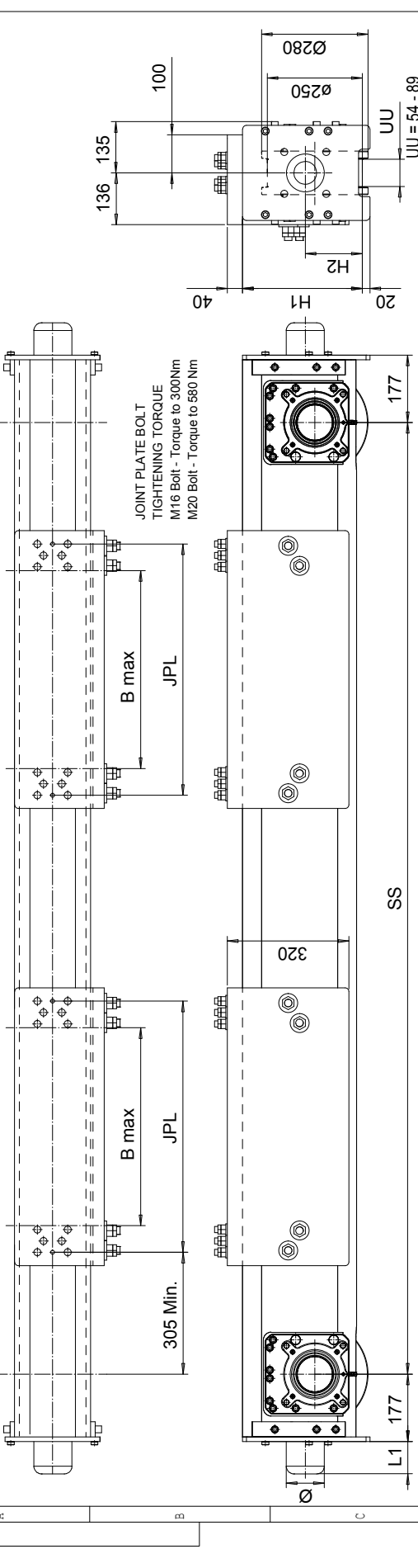


This document is the absolute property of R&M Materials Handling, Inc. This document must not be copied without the written permission of R&M Materials Handling, Inc. The contents thereof must not be disclosed to a third party nor be used for any unauthorized purpose. Contravention will be prosecuted.

RTN25 END TRUCK SIDE JOINT PLATE TYPE F



Wheelbase code	SS (mm)	Max dyn whl load, (kN)		Perm dyn whl load, (kN)		Approx Wt./Trk, kg			H1		H2		
		SG	DG	ASCE 60	ASCE 85	SG	DG	SG	DG	SG	DG	SG	DG
20	2000	185	-	114.6	126.5	444	-	315	315	150	-	150	-
25	2500	171	185	114.6	126.5	488	597	315	315	150	150	150	150
32	3150	170	185	114.6	126.5	615	724	415	315	150	150	150	150
40	4000	158	185	114.6	126.5	707	816	415	415	150	150	150	150
45	4500	128	139	114.6	126.5	761	870	415	415	150	150	150	150
50	5000	138	182	114.6	126.5	973	1082	420	420	155	155	155	155
55	5500	125	135	114.6	126.5	1042	1151	420	420	155	155	155	155

Joint plate	JPL (mm)	B max (mm)	Min. Wheelbase (mm)
F4	480	390	Trolley gage=1200 mm 2500; DG
F5	660	520	2500; DG
F7	890	750	3150; DG
F8	1030	890	3150; DG

The wheel loads listed are only a guideline. The max. wheel load listed is based on the structural integrity of the frame and load placement, and it does not take into account permissible wheel loading or bearing life. SG load placement is at the center, and DG load placement is for a trolley gage of 1400 mm [55 1/8"].

The permissible dynamic wheel load listed is based on assumptions that the bridge speed is 40 m/min [130 fpm], end truck duty is Fem 2m, and the runway rail as listed.

If permissible dynamic wheel load is greater than the maximum dyn wheel load, use maximum dyn wheel load to select the end truck.

Dyn wheel load = 1.15 x static wheel load

Product Code example
RTN25-2570-F50541C0000-N

- N=standard, E=Special
- primer paint, color code (not in use with RTN25)
- Buffer type
- Joint plate distance (DG)
- Joint plate code
- = 1WD, D = 2WD (per truck)
- Wheel groove = UU
- Wheel base = SS
- std, C=asymmetrical joint
- Type of end carriage

Buffer type	L1 (mm)	L2 (mm)	Ø (mm)
B	68	80	80
C	85	100	100
D	105	125	125
K	80	80	80
G	100	100	100
E	150	100	100
F	190	125	125
H	160	160	160
I	200	200	200
M	125	125	125
P	240	160	160
S	300	200	200

K, G, E, F, H, I, M, P, S polyurethane

Rev	Description	Specification	Id	Drawing
RTN25-A	Design	RTN25-A		Rev Drawing
2008-08-11	Date	END TRUCK		
SELE0027	Part	OUTLINE DRAWING		
R&M MATERIALS HANDLING, INC.	Manufacturer	RTN25-F		
1	Revision	RTN25-F		
03/2011	Date	RTN25 END TRUCK SIDE JOINT		