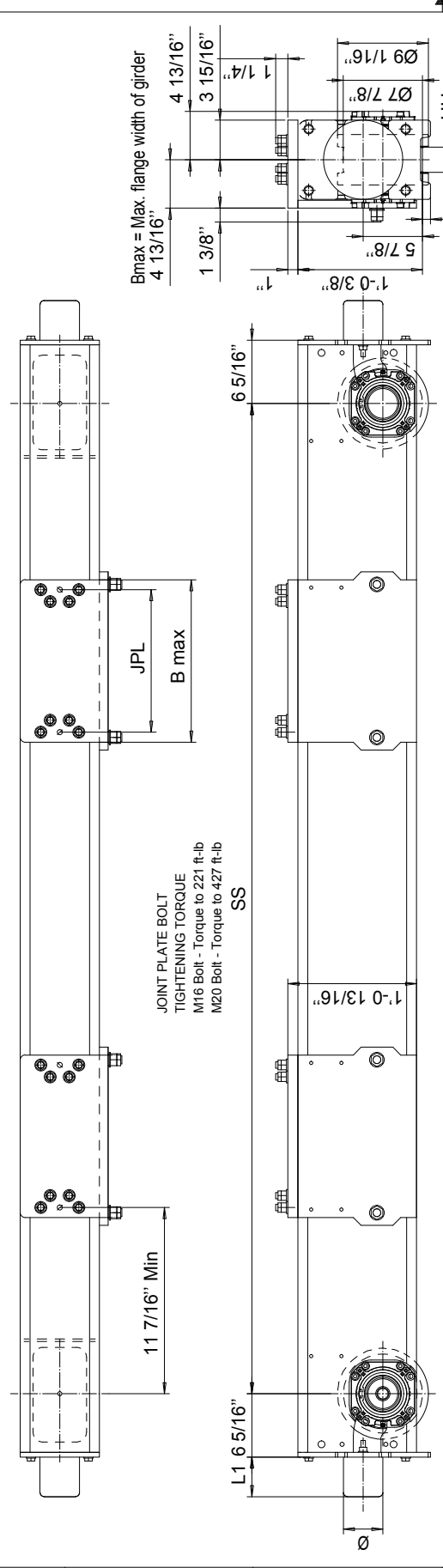


RTN20 END TRUCK SIDE JOINT PLATE TYPE R



Buffer type	L1	Ø
B	2 11/16"	3 3/16"
C	3 5/16"	3 15/16"
D	4 1/8"	4 15/16"
K	3 3/16"	3 3/16"
G	3 15/16"	3 15/16"
E	5 15/16"	3 15/16"
F	7 1/2"	4 15/16"
H	6 5/16"	6 5/16"
I	7 7/8"	7 7/8"
M	4 15/16"	4 15/16"
P	9 7/16"	6 5/16"
S	11 13/16"	7 7/8"
K, G, E, F, H, I, M, P, S polyurethane		

The wheel loads listed are only a guideline. The max. wheel load listed is based on the structural integrity of the frame and load placement, and it does not take into account permissible wheel loading or bearing life. SG load placement is at the center, and DG load placement is for a trolley gage of 1400 mm [55 1/8"].

The permissible dynamic wheel load listed is based on assumptions that the bridge speed is 40 m/min [130 fpm], end truck duty is Fem 2m, and the runway rail as listed.

The actual wheel load should not exceed the permissible wheel load. If the permissible dynamic wheel load is greater than the maximum dyn wheel load, then the actual wheel load cannot exceed maximum dyn wheel load.

Dyn wheel load = 1.15 x static wheel load

Joint plate	Min. Wheelbase	JPL	B max
R3	8'-2 7/16"; DG	9.84"	11 13/16"
R4	8'-2 7/16"; DG	14.17"	16 1/8"
R5	8'-2 7/16"; DG	18.5"	20 1/2"
R6	8'-2 7/16"; DG	22.83"	24 13/16"

Product Code example
RTN20-2574-R40840C0000-N

- RTN20 - Wheelbase
- 2574 - Max dyn whl load, (kip)
- R40840 - Permissible wheel load, (kip)
- C0000 - ASCE 60#
- N - ASCE 85#
- - primer paint, color code (not in use with RTN20)
- - Buffer type
- - Joint plate distance (pin to pin, with double DG girder) (driving wheel to pin with asymmetrical single SG girder)
- - Joint plate code
- - =1WD, D =2WD (Number of driving wheels/end carriage)
- - Wheel groove =UU
- - Wheel base =SS
- - =std, C=asymmetrical joint
- - Type of end carriage

Wheelbase code	SS	Max dyn whl load, (kip)		Permissible wheel load, (kip)		Approx. Wgt / trk, lb	
		SG	DG	ASCE 60#	ASCE 85#	SG	DG
16	5'-3"	29.7	29.7	19.8	22	556	650
20	6'-6 3/4"	29.7	29.7	19.8	22	619	714
25	8'-2 7/16"	29.7	29.7	19.8	22	700	795
32	10'-4"	25.2	29.7	19.8	22	804	898
40	13'-1 1/2"	16.88	19.13	19.8	22	940	1035
45	14'-9 3/16"	11.93	13.28	19.8	22	1020	1114

Rev	Description	Specification	Rev	Specification
RTN20R	RTN20R	RTN20R	RTN20R	RTN20R
2008-02-23	2008-02-23	2008-02-23	2008-02-23	2008-02-23
Phase	Phase	Phase	Phase	Phase
R&M MATERIALS HANDLING INC. 10000 W. 100th St. - Suite 100 Overland Park, KS 66204-3000		END TRUCK OUTLINE DRAWING RTN20-R RTN20 END TRUCK SIDE JOINT		
DATE: 02/20/11 DRAWING NO: RTN20-R PROJECT: RTN20 END TRUCK SIDE JOINT		TITLE: RTN20 END TRUCK SIDE JOINT DATE: 02/20/11		