

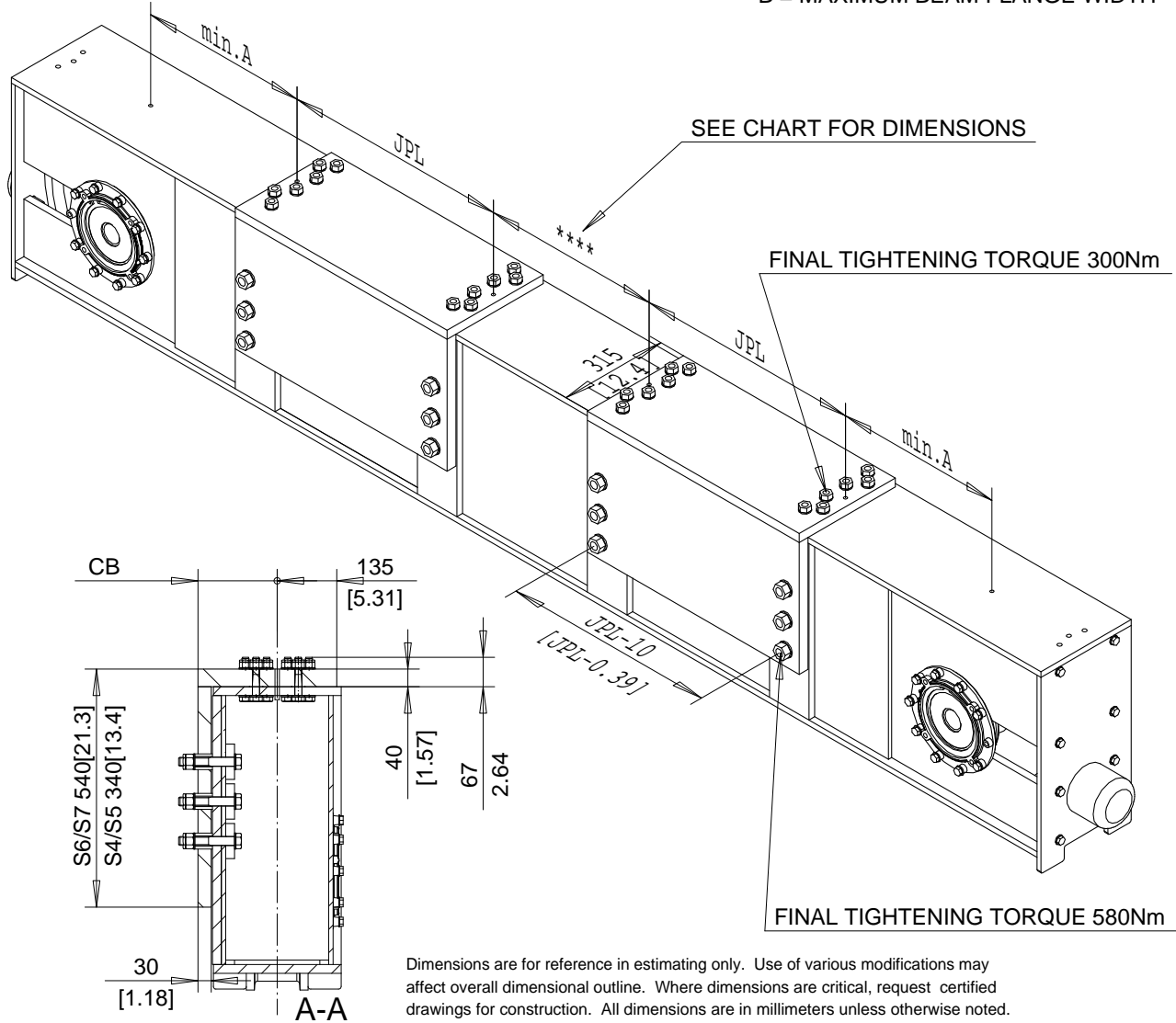
SIDE JOINT PLATE TYPE S

FOR RT25, RT25B, RT32, RT32B, RT50, & RT50B END TRUCKS
 DG TRUCK SHOWN

min A DIMENSION	
TRUCK	min. A mm [in]
RT25	215 [8.46]
RT32	255 [10.04]
RT50	345 [13.58]

JOINT PLATE DIMENSIONS & WEIGHT				
VARIABLE	JOINT PLATE CODE			
	S4	S5	S6	S7
CB mm [in]	170 [6.693]	170 [6.693]	180 [7.087]	180 [7.087]
JPL mm [in]	410 [16.14]	520 [20.47]	520 [20.47]	730 [28.74]
B mm [in]	410 [16.14]	520 [20.47]	520 [20.47]	740 [29.13]
Weight kg [lb]	80 [176]	100 [220]	130 [287]	175 [386]

B = MAXIMUM BEAM FLANGE WIDTH



SS	MAXIMUM **** DIMENSION mm [in]							
	RT25		RT32			RT50		
	S4	S5	S4	S5	S6	S7	S6	S7
2200 [86.61]	950 [37.4]	730 [28.7]	870 [34.3]	650 [25.6]			470 [18.5]	50 [1.97]
2700 [106.3]	1450 [57.1]	1230 [48.4]	1370 [53.9]	1150 [45.3]			970 [38.2]	550 [21.7]
3100 [122.1]	1850 [72.8]	1630 [64.2]	1770 [69.7]	1550 [61]			1370 [53.9]	950 [37.4]
3800 [149.6]	2250 [88.6]	2330 [91.7]	2470 [97.2]	2250 [88.6]			2070 [81.5]	1650 [65]
4500 [177.2]	3250 [115.4]	3030 [119.3]			2950 [116.1]	2530 [99.6]	2770 [109.1]	2350 [92.5]
5000 [196.9]	3750 [147.6]	3530 [140]			3450 [135.8]	3030 [119.3]	3270 [128.7]	2850 [112.2]
5500 216.5	4250 [167.3]	4030 [158.7]			3950 [155.5]	3530 [139]	3770 [148.4]	3350 [131.9]

Chd	Appd	p_QX.JPT_S File
2003-05-27 Date	QX.JPT_S	
R&M	R&M Materials Handling Inc.	
MATERIALS	4501 Gateway Blvd, Springfield	
HANDLING	JOINT PLATE TYPE S	
INC.	Issue	3/2006

QX.JPT_S