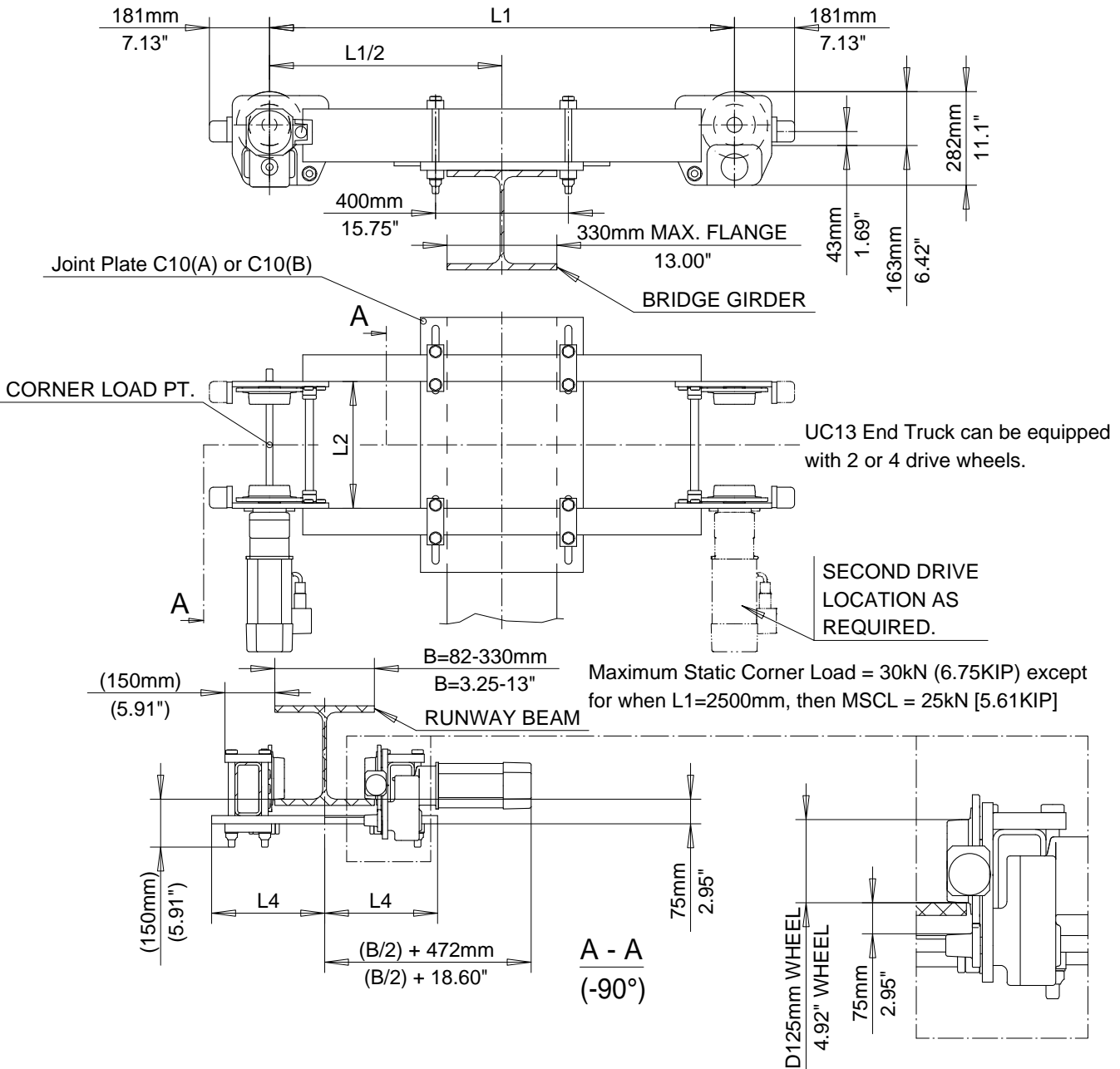


UC13 END TRUCK

SM2000.CL13



Dimensions are for reference in estimating only. Use of various modifications may affect overall dimensional outline. Where dimensions are critical, request certified drawings for construction. All dimensions are in millimeters unless otherwise noted.

COMPONENTS - ENDTRUCK

| L1 mm (in) | L2 mm (in) | L4 mm (in) | B (flg width) mm (in) | Wt. kg (lb) | | | |
|---------------|---------------|---------------|--------------------------|----------------|------------|--------------------------------|-----------------------------|
| 1400 (55.12) | B+80 (3.15) | 275 (10.83) | 82-199 (3.25-7.81) | 226(498) | Chd | Appd | p_SM2000.CL13 File |
| | | 340 (13.39) | 200-330 (7.88-13) | 242(534) | | | |
| 1700 (66.93) | B+80 (3.15) | 275 (10.83) | 82-199 (3.25-7.81) | 240(529) | 2000-06-12 | SM2000.CL13 | R&M Materials Handling Inc. |
| | | 340 (13.39) | 200-330 (7.88-13) | 256(564) | Date | | |
| 2200 (86.62) | B+80 (3.15) | 275 (10.83) | 82-199 (3.25-7.81) | 306(675) | R&M | 4501 Gateway Blvd, Springfield | Issue |
| | | 340 (13.39) | 200-330 (7.88-13) | 322(710) | MATERIALS | | |
| 2500 (98.43) | B+80 (3.15) | 275 (10.83) | 82-199 (3.25-7.81) | 306(675) | HANDLING | UC13 END TRUCK | 3/2006 |
| | | 340 (13.39) | 200-330 (7.88-13) | 322(710) | INC. | | |