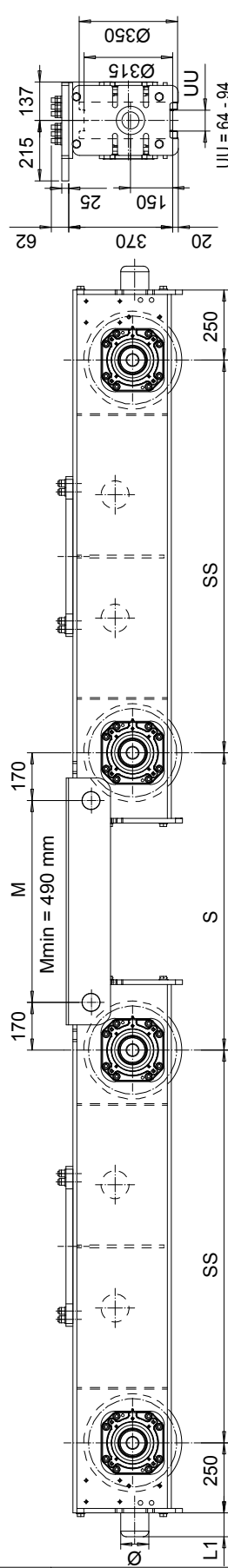
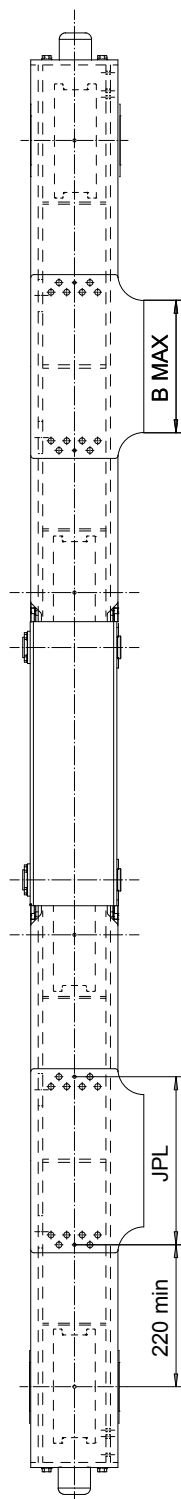


RTN32B END TRUCK TOP JOINT PLATE TYPE K

This document is the absolute property of R&M Materials Handling, Inc. This document must not be copied without the written permission of R&M Materials Handling, Inc. The contents thereof must not be disclosed to a third party nor be used for any unauthorized purpose. Contravention will be prosecuted.



Buffer type	L1, (mm)	Ø, (mm)
B	68	80
C	85	100
D	105	125
E	150	100
F	190	125
H	160	160
I	200	200
M	125	125
P	240	160
S	300	200
T	350	250
Y	475	250

B, C, D rubber
 E, F, H, I, M, P, S, T, Y polyurethane

Joint plate	JPL (mm)	B max (mm)
K4	520	410
K5	630	520
K7	850	740
K9	1100	990

Minimum wheelbase with K9 joint plate is 1600 mm.

The wheel loads listed are only a guideline. The max. wheel load listed is based on the structural integrity of the frame and load placement, and it does not take into account permissible wheel loading or bearing life. Load placement is assumed at the center of each truck. The permissible dynamic wheel load listed is based on assumptions that the bridge speed is 40 minin [130 fpm], end truck duty is Fem 2m, and the runway rail is as listed. The actual wheel load should not exceed the permissible wheel load. If the permissible dynamic wheel load is greater than the maximum wheel load, then the actual wheel load cannot exceed maximum wheel load.

- N=standard, E=Special primer paint, color code (not in use with RTN32)
- Buffer type
- Joint plate distance, mm (pin to pin, with DG)
- Joint plate code
- =1WD, D =2WD (Number of driving wheels/truck)
- Wheel groove = UU, mm
- Wheel base = SS, mm
- std, B=bogie
- Type of end carriage

Product Code example

RTN32B1474-K41940C0000-N

Wheelbase code	SS (mm)	Max whl load (kN)	Permissible dyn whl load, (kN)	Approx Wt./Trk, kg
14	1400	253	ASCE 40 ASCE 60 ASCE 85 BETH 135	1032
16	1600	253	132 143 143 171	1085
18	1800	253	132 143 143 171	1137
20	2000	253	132 143 143 171	1189

Rev	Description	Specification	Iss	Drawn by
001	Design	RTN32B	001	
002	Date	2008-08-11	002	
003	Dept	SELB0027	003	
004	Project	RTN32B-K	004	
005	Product	RTN32B-K	005	
006	Version	RTN32B END TRUCK TOP JOINT	006	

R&M MATERIALS HANDLING, INC.
 10000 W. 10th Street
 Minneapolis, MN 55426
 Phone: 612-835-1000
 Fax: 612-835-1001
 Email: sales@rmh.com