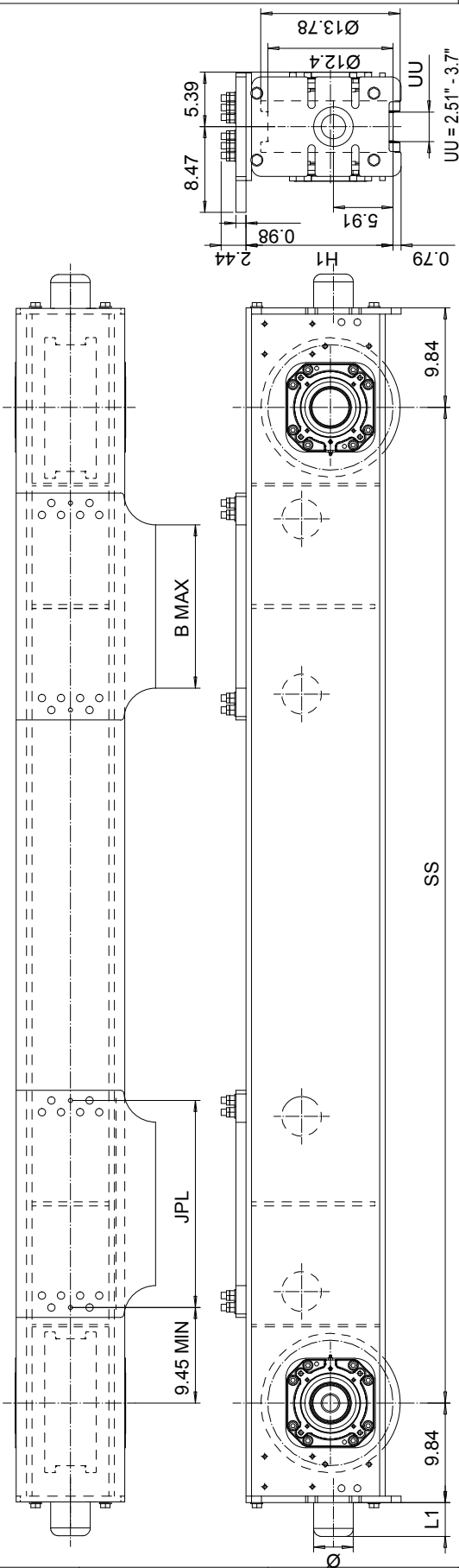


This document is the absolute property of R&M Materials Handling, Inc. This document must not be copied without the written permission of R&M Materials Handling, Inc. The contents thereof must not be disclosed to a third party nor be used for any unauthorized purpose. Contravention will be prosecuted.

RTN32 END TRUCK TOP JOINT PLATE TYPE K



The wheel loads listed are only a guideline. The max. wheel load listed is based on the structural integrity of the frame and load placement, and it does not take into account permissible wheel loading or bearing life. SG load placement is at the center, and DG load placement is for a trolley gauge of 1400 mm (55 1/8"). The permissible dynamic wheel load listed is based on assumptions that the bridge speed is 40 m/min [130 fpm], end truck duty is Fem 2m, and the runway rail as listed. The actual wheel load should not exceed the permissible wheel load. If the permissible dynamic wheel load is greater than the maximum wheel load, then the actual wheel load cannot exceed maximum wheel load.

Product Code example
RTN32-2574-K40980C0000-N

- N=standard, E=Special
- primer paint, color code (not in use with RTN32)
- Buffer type
- Joint plate distance (pin to pin, with double DG girder) (driving wheel to pin with asymmetrical single SG girder)
- Joint plate code
- =1WD, D =2WD (Number of driving wheels/end carriage)
- Wheel groove =UU
- Wheel base =SS
- std, C=asymmetrical joint
- Type of end carriage

Joint plate	JPL	B max
K4	20.47"	16.14"
K5	24.80"	20.47"
K7	33.46"	29.13"
K9	43.31"	38.98"

Minimum wheelbase with K9 joint plate is 10'-4".

Wheelbase code	SS	Max wtl load, (kip)		Perm dyn wtl load, (kip)		Approx. Wt./Trk, lb	
		SG	DG	BETH 135	ASCE 85	SG	DG
25	8'-2 7/16"	56.93	44	32.18	38.48	1405	1610
32	10'-4"	56.93	44	32.18	38.48	1593	1798
40	13'-1 1/2"	46.8	41.63	32.18	38.48	1796	2001
45	14'-9 1/8"	45	40.95	32.18	38.48	1919	2124
50	16'-4 7/8"	45	40.95	32.18	38.48	2188	2393
55	18'-1/2"	40.95	38.48	32.18	38.48	2323	2528

Buffer type	L1	Ø
B	2 11/16"	3 3/16"
C	3 5/16"	3 15/16"
D	4 1/8"	4 15/16"
E	5 15/16"	3 15/16"
F	7 1/2"	4 15/16"
H	6 5/16"	6 5/16"
I	7 7/8"	7 7/8"
M	4 15/16"	4 15/16"
P	9 7/16"	6 5/16"
S	11 13/16"	7 7/8"
T	13 3/4"	9 7/8"
Y	18 3/4"	9 7/8"

B, C, D rubber
 K, G, E, F, H, I, M, P, S polyurethane

Rev	Description	Specifications	Rev	Drawn by
001	RTN32-A	RTN32-A	001	RTN32-A
002	2008-08-11	END TRUCK	002	RTN32-A
003	SE:RJD/007	OUTLINE DRAWING	003	RTN32-K
004		RTN32-K	004	RTN32-K
005		RTN32-K	005	RTN32-K

R&M MATERIALS HANDLING, INC.
 111-1
 EON32
 5/2010