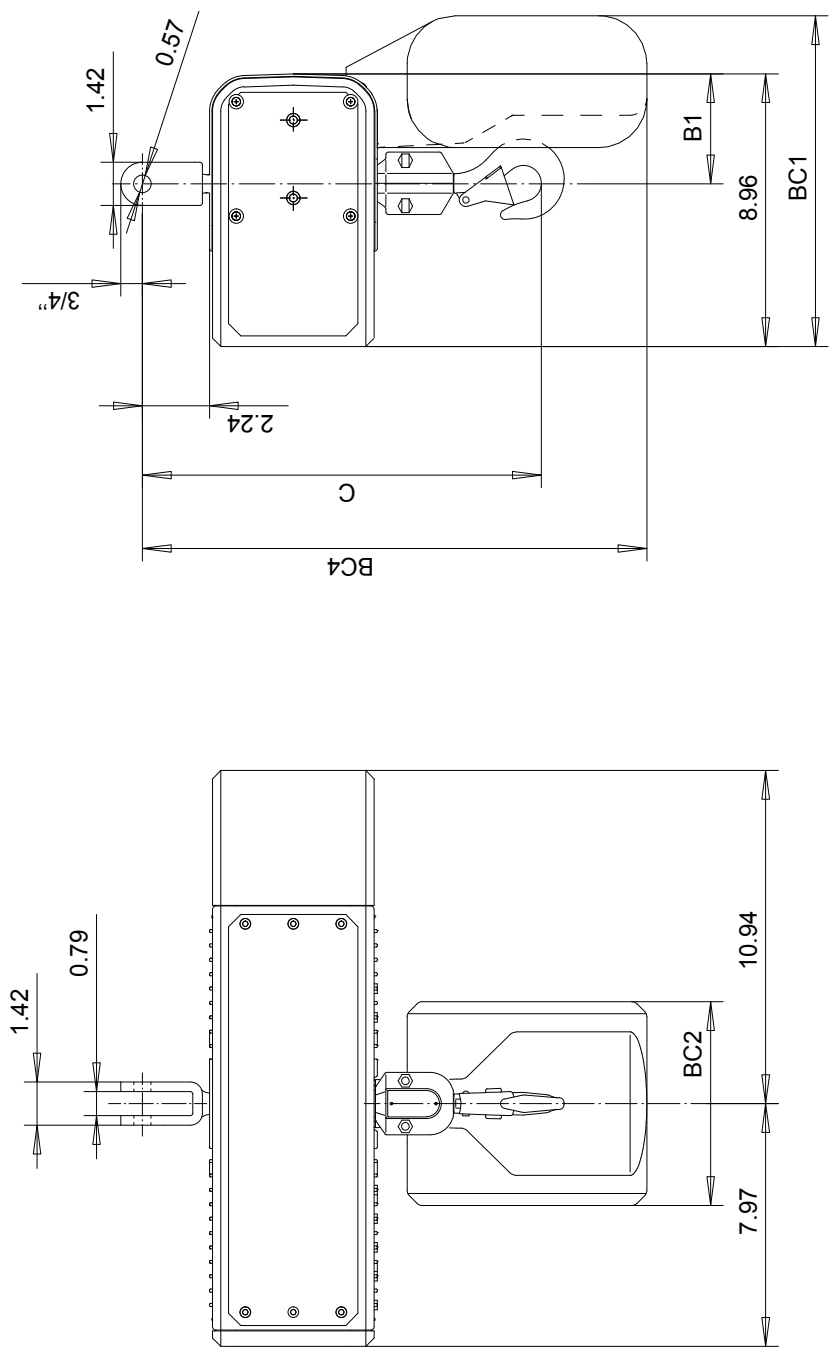


SINGLE-PHASE CHAIN HOIST

Dimensions are for reference in estimating only. Use of various modifications may affect overall dimensional outline. Where dimensions are critical, request certified drawings for construction. All dimensions are in inches unless otherwise noted.



LIFT	CAP TON	FR	LIFT FT	SUSP	1 SPEED FPM	2 SPEED FPM(4:1)	FALL	FLG CODE	FLANGE RANGES			TROLLEY DIMENSIONS			MAX FLG THK	
									FLG CODE	MAX TD	MAX TW	MIN WS	MAX TD	MAX TW		MIN WS
---	---	---	---	---	---	---	---	---	< 25ft	< 50ft	< 100ft	< 150ft	< 25ft	< 50ft	< 100ft	< 150ft
1 FALL	1/4	LM05	10	LM	16S	---	1	---	12.44	12.24	12.24	12.24	6.30	5.91	5.91	12.60
LIFT	---	---	---	---	---	---	---	---	< 13ft	< 25ft	< 50ft	< 75ft	< 13ft	< 25ft	< 50ft	< 75ft
2 FALLS	1/2	LM05	10	LM	16S	---	1	---	12.44	12.24	12.24	12.24	6.30	5.91	5.91	12.60
	1	LM05	10	LM	8S	---	2	---	10.87	10.87	10.87	10.87	16.73	19.09	19.09	21.65

SINGLE-PHASE CHAIN HOIST

LOADMATE CHAIN HOIST MODEL NUMBER		Trolley Dimensions		Chd		Appd	
FR	CAP TON	LIFT FT	SUSP	1 SPEED FPM	2 SPEED FPM(4:1)	Date	File
LM05	1/4	10	LM	16S	---	2001-01-11	2213417103
LM05	1/2	10	LM	16S	---	R&M	R&M Materials Handling Inc.
LM05	1	10	LM	8S	---	MATERIALS HANDLING INC.	4501 Gateway Blvd, Springfield
							LM05 LM HOIST
							Issue 05/2010