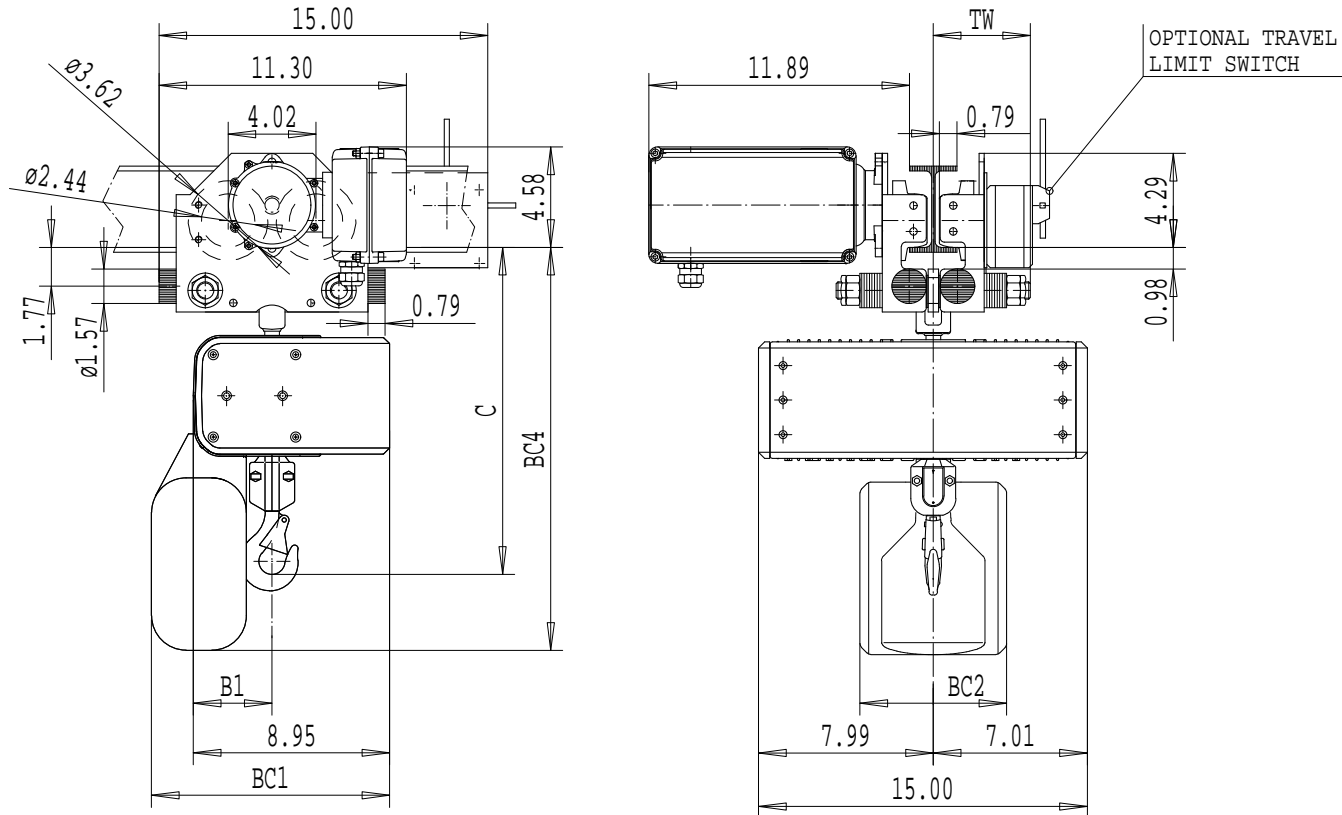


Dimensions are for reference in estimating only. Use of various modifications may affect overall dimensional outline. Where dimensions are critical, request certified drawings for construction. All dimensions are in inches unless otherwise noted.



2213417058

	C	B1	BC1				BC2				BC4			
LIFT			<25ft	<50ft	<100ft	<150ft	<25ft	<50ft	<100ft	<150ft	<25ft	<50ft	<100ft	<150ft
1 FALL	14.92	3.58	10.87	12.44	12.24	12.24	6.69	6.30	6.30	12.60	18.50	20.87	23.43	23.43
LIFT			<13ft	<25ft	<50ft	<75ft	<13ft	<25ft	<50ft	<75ft	<13ft	<25ft	<50ft	<75ft
2 FALLS	18.03	4.41	10.87	12.44	12.24	12.24	6.69	6.30	6.30	12.60	18.50	20.87	23.43	23.43

LOAD MATE CHAIN HOIST MODEL NUMBER							TROLLEY DIMENSIONS						KHSJST	Appd	p_2213417058	
FR	CAP TON	LIFT FT	SUSP	1 SPEED FPM	2 SPEED FPM(4:1)	FALL	FLG CODE	FLG CODE	FLANGE RANGES	MAX. TD	MAX. TW	MIN. WS	MAX FLG THK	Chd	File	
LM05	1/4	10	MT	16S, 32S	32T	1	1 - 5	1	2.28 - 3.94	---	5.59	---	.79	2003-01-28	2213417058	
LM05	1/2	10	MT	16S, 32S	32T	1	1 - 5	2	4.17 - 5.90	---	6.58	---	.79	Date	R&M Materials Handling Inc.	
LM05	1/2	10	MT	---	16T	2	1 - 5	3	6.10 - 7.87	---	7.56	---	.79	R&M	4501 Gateway Blvd, Springfield	
LM05	1	10	MT	---	16T	2	1 - 5	4	8.11 - 9.76	---	8.50	---	.79	MATERIALS HANDLING		
								5	10.23-12.09	---	9.69	---	.79	INC.	LM05 MT, 2SPD TROLLEY	Issue 02/2007