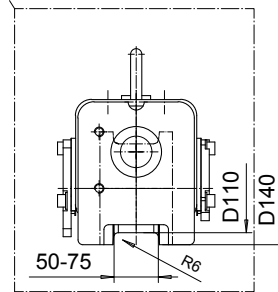
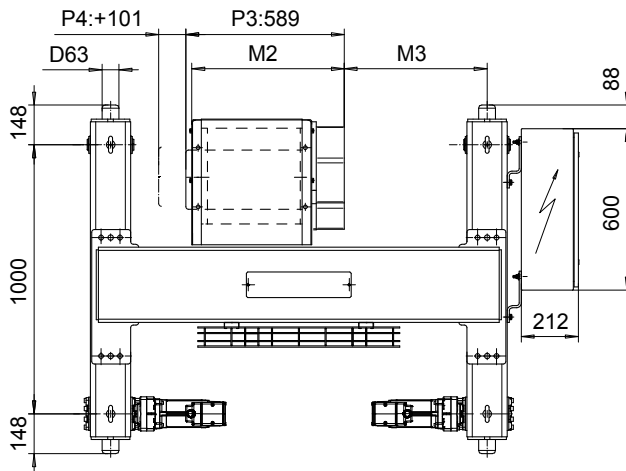
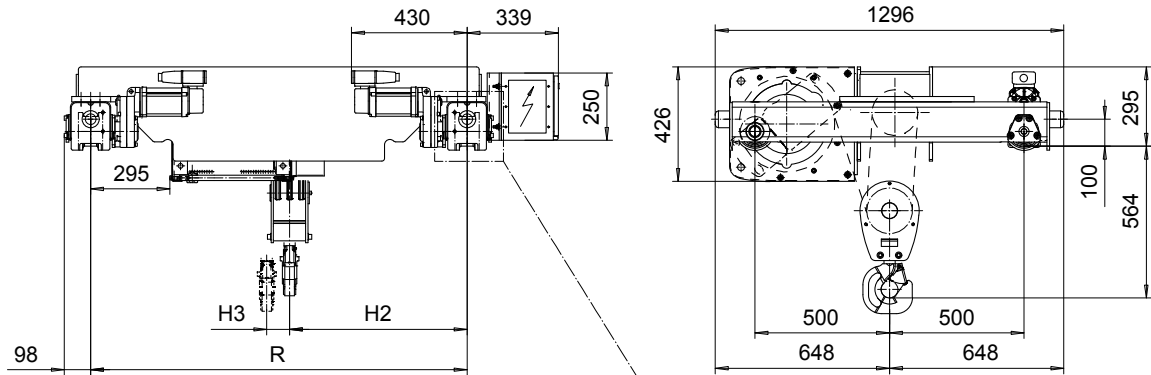


DOUBLE GIRDER, MEDIUM, 6 PART SINGLE

Hoist type:

SX4 061...D0

SI-50Hz



Load (kg)	Class Fem/ISO	Hoisting speed (m/min)	
		Gear+Motor code:	
		F+P3	H+P4
6000	3m/M6	3.2/0.5	5/0.8
7500	2m/M5	3.2/0.5	5/0.8
+ weight (kg):		-	20

HOL (m)	Length code	M2 (mm)	M3 (mm)	H2 (mm)	H3 (mm)	min R (mm)	Weight (kg)
6	C	567	531	660	49	1400	530
8	D	667	681	810	65	1700	570
10	E	787	831	960	85	2000	600

Note: minR is minimum rail gauge when second brake is supplied
Standard rail gauges are 1400, 1700, and 2000 mm

This document is the absolute property of R&M Materials Handling, Inc. This document must not be copied without the written permission of R&M Materials Handling, Inc. The contents thereof must not be disclosed to a third party nor be used for any unauthorized purpose. Contravention will be prosecuted.

ETFPAL Design	ETFPAL Chd	Appd	Ref Drawing	QB-M-06
2002-08-28 Date	TROLLEY; DOUBLE GIRDER			1 of 12 Folder
SLEQDCV Owner Dept	MEDIUM, 6 ROPE FALLS			
R&M MATERIALS HANDLING, INC. HOIST & CRANE PRODUCTS	D002099-A			Issue 6