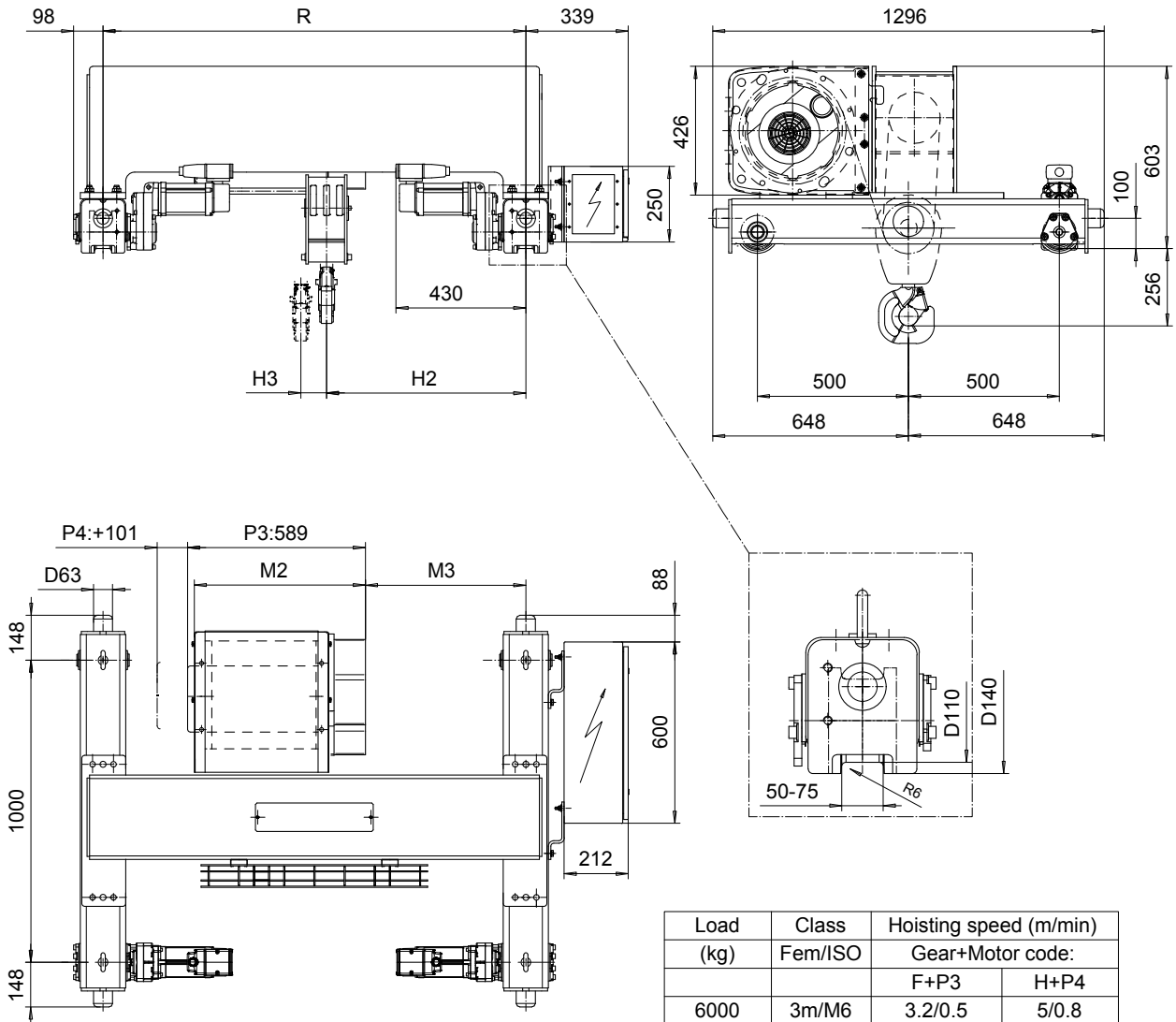


DOUBLE GIRDER, HIGH CONNECTION, 6 PART SINGLE
Hoist type:
SX4 061...DH

SI-50Hz



Load (kg)	Class Fem/ISO	Hoisting speed (m/min)	
		Gear+Motor code:	
		F+P3	H+P4
6000	3m/M6	3.2/0.5	5/0.8
7500	2m/M5	3.2/0.5	5/0.8
+ weight (kg):		-	20

HOL (m)	Length code	M2 (mm)	M3 (mm)	H2 (mm)	H3 (mm)	min R (mm)	Weight (kg)
6	C	567	431	560	49	1200	555
8	D	667	431	560	65	1200	565
10	E	787	531	660	85	1400	595

Note: minR is minimum rail gauge when second brake is supplied
 Standard rail gauges are 1200, 1400, 1700, and 2000 mm

This document is the absolute property of R&M Materials Handling, Inc. This document must not be copied without the written permission of R&M Materials Handling, Inc. The contents thereof must not be disclosed to a third party nor be used for any unauthorized purpose. Contravention will be prosecuted.

ETTATA Design 2002-10-11 Date	ETTPAL Chd Appd	Ref Drawing	QB-H-06
SLEQDCV Owner Dept	TROLLEY; DOUBLE GIRDER HIGH, 6 ROPE FALLS		1:10 Folder
R&M R&M MATERIALS HANDLING, INC. HOIST & CRANE PRODUCTS SHERBOURNE, ONT.	D002236-A		Issue 5