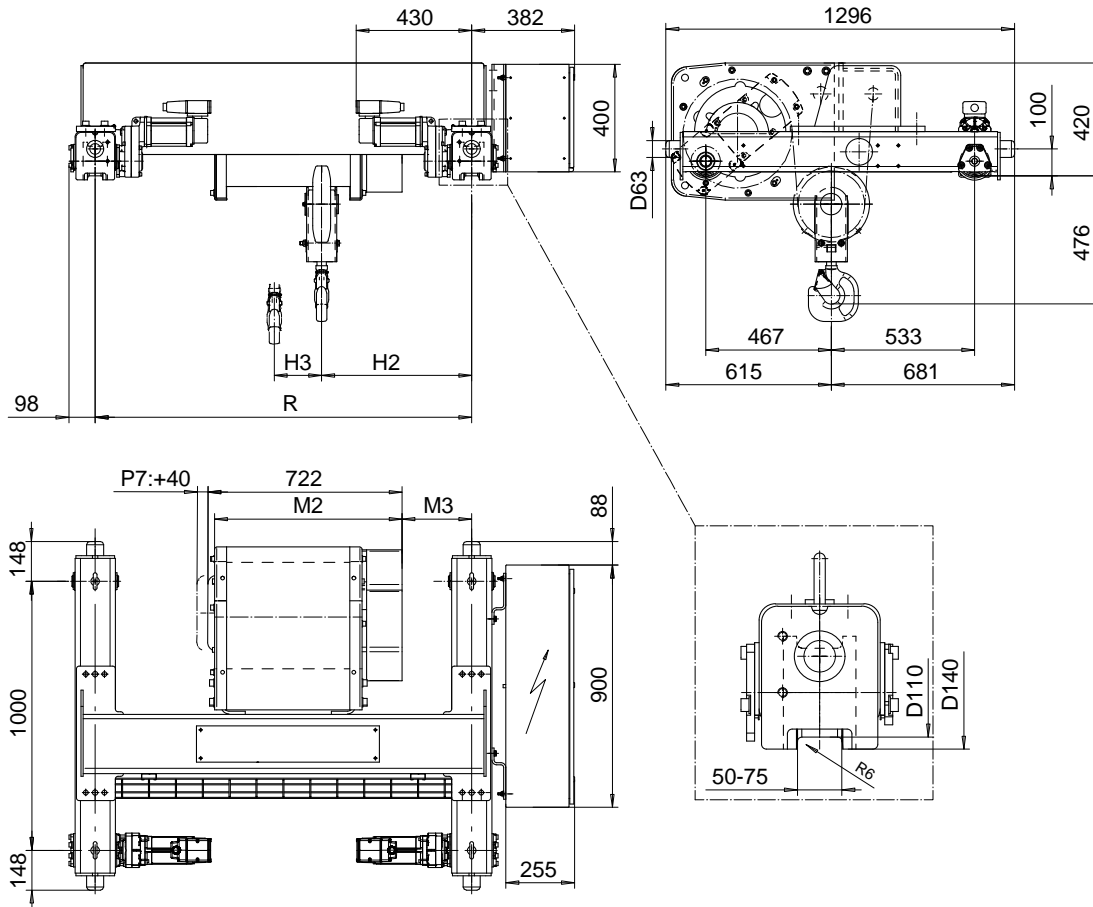


DOUBLE GIRDER, MEDIUM, 2 PART SINGLE
Hoist type:
SX5 021...D0

SI-50Hz



Load (kg)	Class Fem/ISO	Hoisting speed (m/min)			
		Gear+Motor code:			
		E+P5	F+P5	H+P6	J+P7
4000	3m/M6	8/1.3	10/1.7	16/2.7	20/3.3
5000	2m/M5	8/1.3	10/1.7	16/2.7	20/3.3
+ weight (kg):		-	-	30	40

HOL	Length	M2	M3	H2	H3	min R	Weight
(m)	code	(mm)	(mm)	(mm)	(mm)	(mm)	(kg)
18	D	697	259	558	176	1400	650
24	E	817	259	558	235	1400	675
32	F	967	372	671	309	1700	720
40	G	1157	522	821	403	2000	760

Note: minR is minimum rail gauge when second brake is supplied
 Standard rail gauges are 1400, 1700, and 2000 mm

This document is the absolute property of R&M Materials Handling, Inc. This document must not be copied without the written permission of R&M Materials Handling, Inc. The contents thereof must not be disclosed to a third party nor be used for any unauthorized purpose. Contravention will be prosecuted.

ETFPAL Design	ETFPAL Chd	Appd	Ref Drawing	QC-M-02
2002-08-29 Date	TROLLEY; DOUBLE GIRDER			1 of 12 Folder
SLEQDOCV Owner Dept	MEDIUM, 2 ROPE FALLS			
R&M MATERIALS HANDLING, INC. 8001 & GARDEN GROVES SHELTONVILLE, OHIO	D002113-A			Issue 6