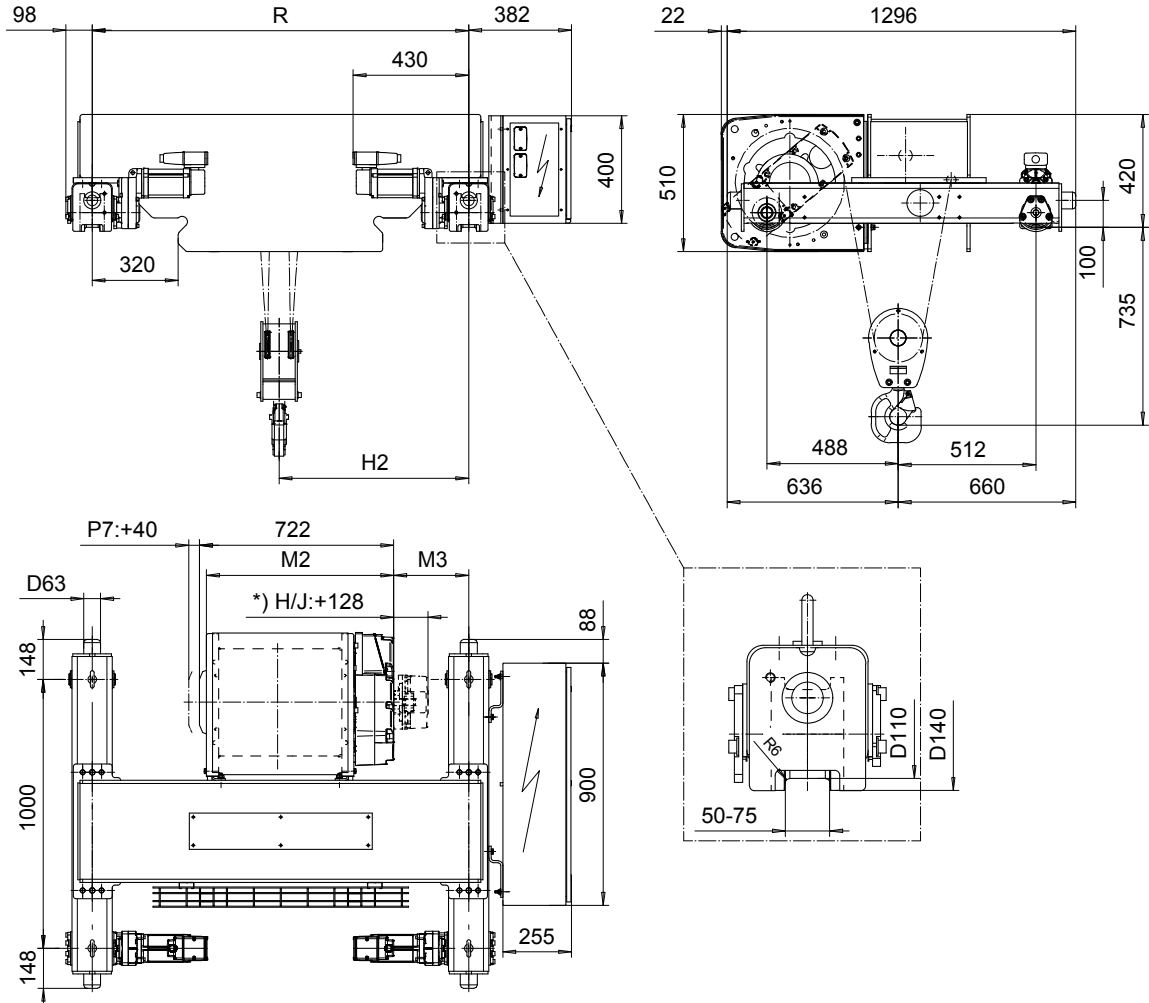


**DOUBLE GIRDER, MEDIUM, 2 PART DOUBLE**  
**Hoist type:**

SX5 022...D0

SI-50Hz



Load (kg)	Class Fem/ISO	Hoisting speed (m/min)		
		Gear+Motor code:		
		F+P5	H+P6	J+P7
4000	3m/M6	10/1.7	16/2.7	20/3.3
5000	2m/M5	10/1.7	16/2.7	20/3.3
+ weight (kg):		-	30	40

HOL (m)	Length code	M2 (mm)	M3 (mm)	H2 (mm)	min R (mm)	Weight (kg)
8.5	D	697	279	705	1400	720
13	E	817	217	705	1400	780
18	F	967	292	855	1700	790
25	G	1157	197	855	1700	850
33.5	H	1407	256	1036	2000	880
46	J	1757	256	1211	2400	985

Note: minR is minimum rail gauge when second brake is supplied  
Primary brake is mounted on gearcase for drum lengths H and J  
Standard rail gauges are 1400, 1700, 2000, and 2400 mm

This document is the absolute property of R&M Materials Handling, Inc. This document must not be copied without the written permission of R&M Materials Handling, Inc. The contents thereof must not be disclosed to a third party nor be used for any unauthorized purpose. Contravention will be prosecuted.

ETPAL Design 2002-08-30 Date	ETPAL Chd Appd	Ref Drawing	QC-M-22
SLEQDCV Owner Dept	TROLLEY; DOUBLE GIRDER MEDIUM, 2x2 ROPE FALLS		1 of 12 Folder
R&M R&M MATERIALS HANDLING, INC. HOIST & CRANE PRODUCTS	D002134-A		Issue 4