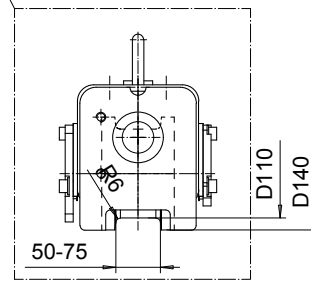
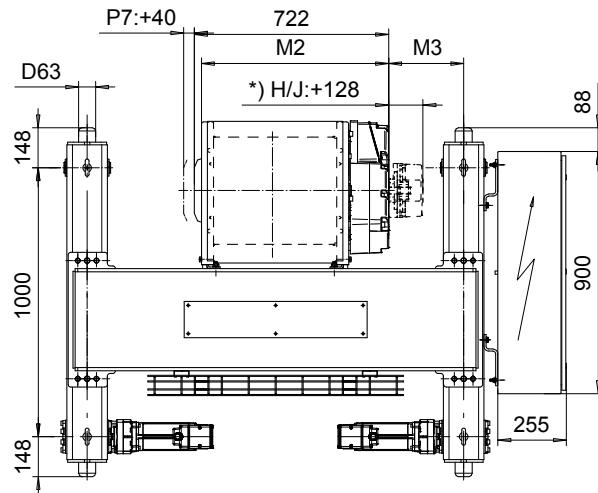
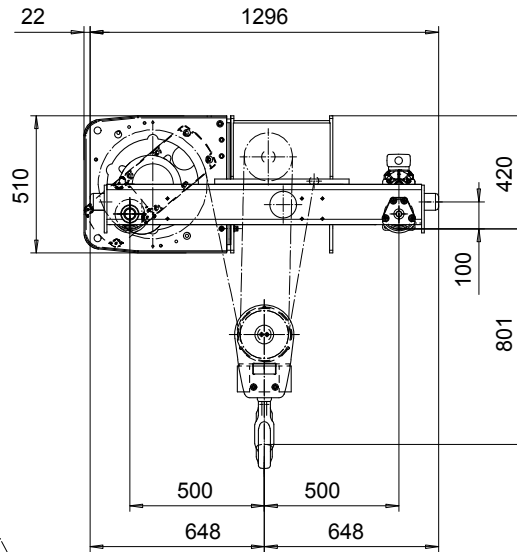
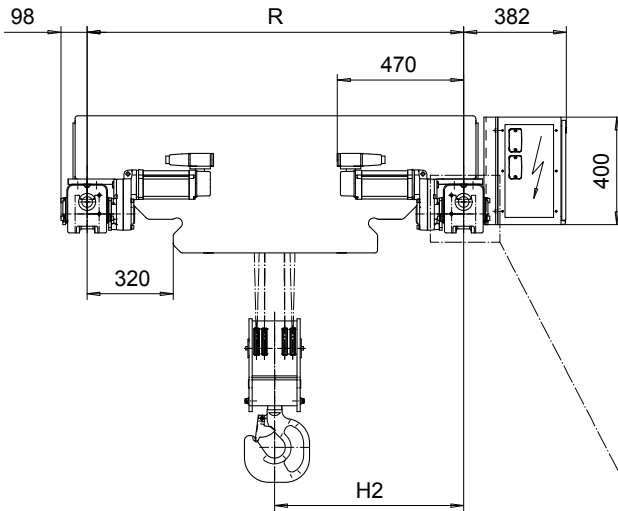


**DOUBLE GIRDER, MEDIUM, 4 PART DOUBLE Hoist type:**

**SX5 042...D0**

**SI-50Hz**



| Load (kg)      | Class Fem/ISO | Hoisting speed (m/min) |       |        |
|----------------|---------------|------------------------|-------|--------|
|                |               | Gear+Motor code:       |       |        |
|                |               | F+P5                   | H+P6  | J+P7   |
| 6300           | 3m/M6         | 5/0.8                  | 8/1.3 | 10/1.7 |
| 8000           | 3m/M6         | 5/0.8                  | 8/1.3 | 10/1.7 |
| 10000          | 2m/M5         | 5/0.8                  | 8/1.3 | 10/1.7 |
| + weight (kg): |               | -                      | 30    | 40     |

| HOL (m) | Length code | M2 (mm) | M3 (mm) | H2 (mm) | min R (mm) | Weight (kg) |
|---------|-------------|---------|---------|---------|------------|-------------|
| 4       | D           | 697     | 279     | 703     | 1400       | 780         |
| 6.5     | E           | 817     | 217     | 705     | 1400       | 840         |
| 9       | F           | 967     | 292     | 853     | 1700       | 850         |
| 12.5    | G           | 1157    | 197     | 855     | 1700       | 910         |
| 16.5    | H           | 1404    | 256     | 1034    | 2000       | 940         |
| 23      | J           | 1757    | 256     | 1209    | 2400       | 1045        |

Note: minR is minimum rail gauge when second brake is supplied  
 Primary brake is mounted on gearcase for drum lengths H and J  
 Standard rail gauges are 1400, 1700, 2000, and 2400 mm

This document is the absolute property of R&M Materials Handling, Inc. This document must not be copied without the written permission of R&M Materials Handling, Inc. The contents thereof must not be disclosed to a third party nor be used for any unauthorized purpose. Contravention will be prosecuted.

|   |  |             |                   |
|---|--|-------------|-------------------|
| ETFPAL<br>Design<br>2002-08-30<br>Date  | ETFPAL<br>Chd<br>Appd                            | Ref Drawing | QC-M-24           |
| SLEQDCV<br>Owner Dept   | TROLLEY; DOUBLE GIRDER<br>MEDIUM, 2x4 ROPE FALLS |             | 1 of 12<br>Folder |
| R&M<br>R&M MATERIALS HANDLING, INC.<br>HOIST & CRANE PRODUCTS<br>GREENSBORO, NC | D002135-A  |             | Issue<br>4        |