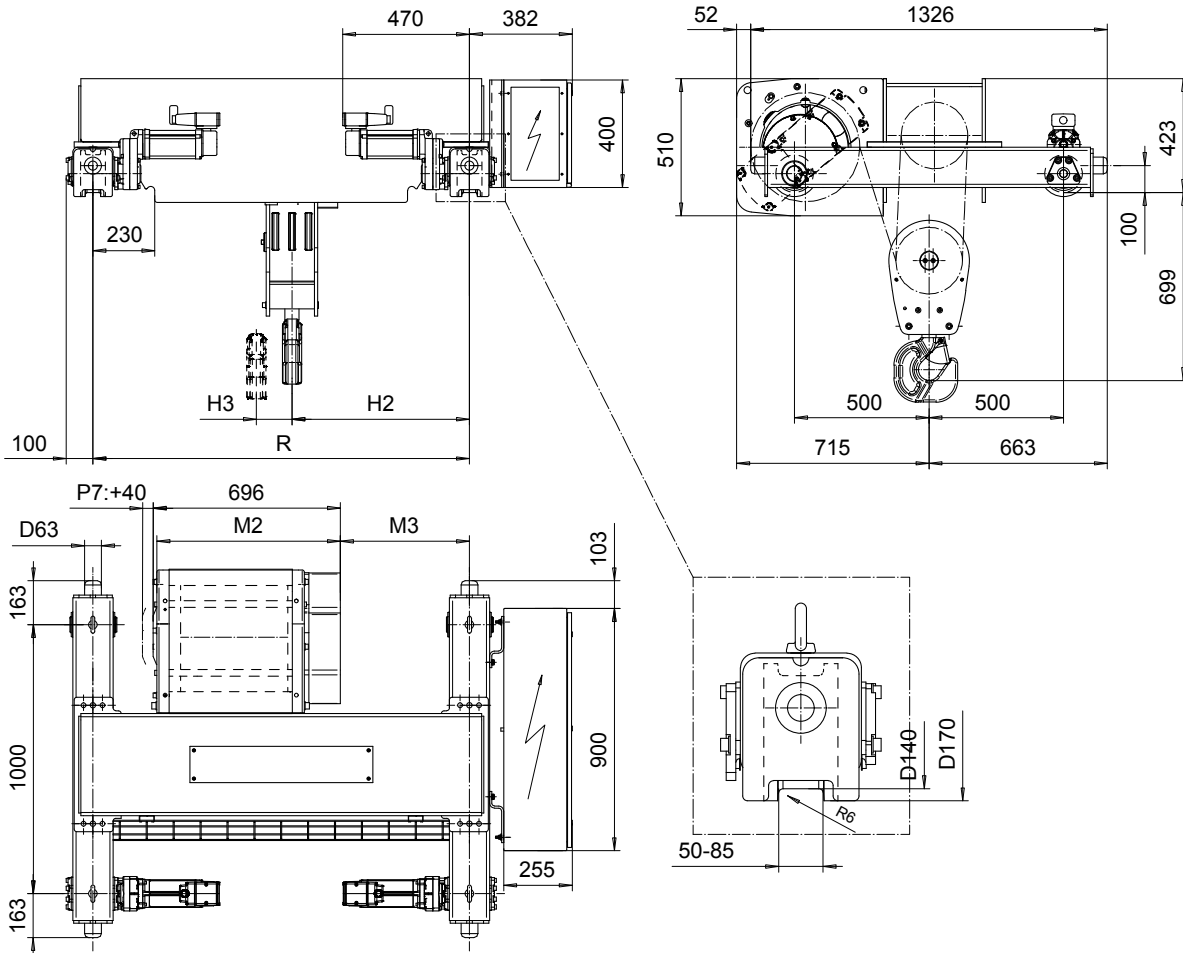


**DOUBLE GIRDER, MEDIUM, 6 PART SINGLE**  
**Hoist type:**  
**SX5 061...D0**

SI-50Hz



Load (kg)	Class Fem/ISO	Hoisting speed (m/min)		
		Gear+Motor code:		
		F+P5	H+P6	J+P7
12000	3m/M6	3.2/0.5	5/0.8	6.3/1.1
15000	2m/M5	3.2/0.5	5/0.8	6.3/1.1
+ weight (kg):		-	30	40

HOL (m)	Length code	M2 (mm)	M3 (mm)	H2 (mm)	H3 (mm)	min R (mm)	Weight (kg)
6	D	682	480	657	53	1400	775
8	E	802	630	807	78	1700	820
10	F	952	770	952	98	2000	855
13	G	1142	970	1152	132	2400	885

Note: minR is minimum rail gauge when second brake is supplied  
 Standard rail gauges are 1400, 1700, 2000, and 2400 mm.

This document is the absolute property of R&M Materials Handling, Inc. This document must not be copied without the written permission of R&M Materials Handling, Inc. The contents thereof must not be disclosed to a third party nor be used for any unauthorized purpose. Contravention will be prosecuted.

ETFPAL Design 2002-08-30 Date	ETFPAL Chd Appd	Ref Drawing	QC-M-06
SLEQDOCV Owner Dept	TROLLEY; DOUBLE GIRDER MEDIUM, 6 ROPE FALLS		1 of 12 Folder
R&M R&M MATERIALS HANDLING, INC. HOIST & CRANE PRODUCTS SHERBOURNE, ONT.	D002124-A		Issue 5