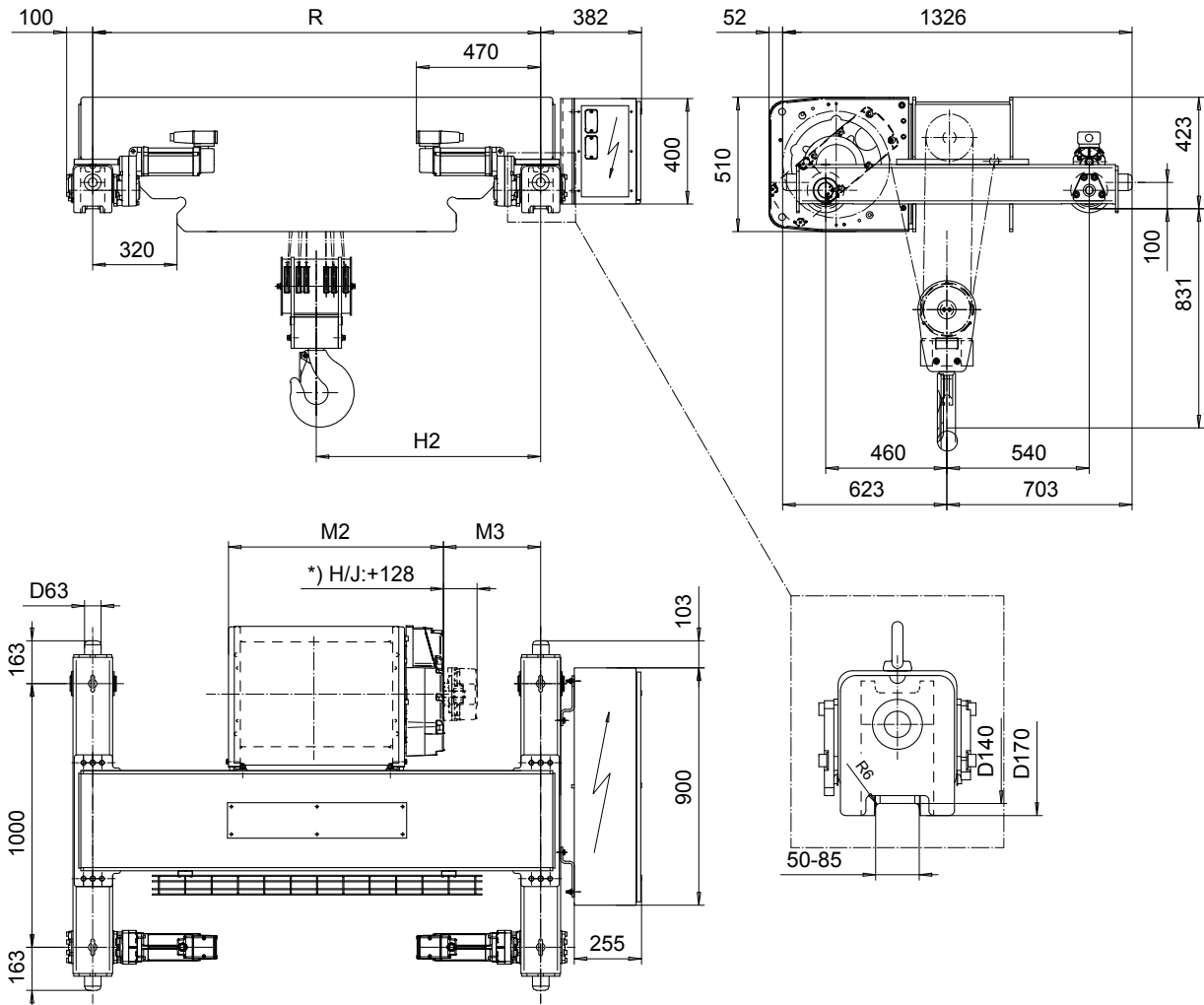


**DOUBLE GIRDER, MEDIUM, 6 PART DOUBLE**  
**Hoist type:**

**SX5 062...D0**

**SI-50Hz**



Load (kg)	Class Fem/ISO	Hoisting speed (m/min)		
		Gear+Motor code:		
		F+P5	H+P6	J+P7
12000	3m/M6	3.2/0.5	5/0.8	6.3/1.1
15000	2m/M5	3.2/0.5	5/0.8	6.3/1.1
+ weight (kg):		-	30	40

HOL (m)	Length code	M2 (mm)	M3 (mm)	H2 (mm)	min R (mm)	Weight (kg)
4	E	817	217	705	1400	860
6	F	967	292	852	1700	870
8	G	1157	197	855	1700	930
11	H	1404	256	1033	2000	960
15	J	1757	256	1208	2400	1065

Note: minR is minimum rail gauge when second brake is supplied  
 Primary brake is mounted on gearcase for drum lengths H and J  
 Standard rail gauges are 1400, 1700, 2000, and 2400 mm

This document is the absolute property of R&M Materials Handling, Inc. This document must not be copied without the written permission of R&M Materials Handling, Inc. The contents thereof must not be disclosed to a third party nor be used for any unauthorized purpose. Contravention will be prosecuted.

ETTPAL Date Issd 2002-08-30	ETTPAL Chd Agpd	Ref Drawing TROLLEY; DOUBLE GIRDER MEDIUM, 2x6 ROPE FALLS	QC-M-26
SLEQDCV Ovdrsr Drght	Folder		1 of 12
R&M R&M MATERIALS HANDLING, INC. 5000 1/2 STREET BRIDGE SARASOTA, FL 34237	D002132-A		Issue 5